

The  
Magazine of the Midland Agricultural College



1946





Editor : ALISON M. CLARKE.

*STUDENTS' ASSOCIATION OFFICERS :*

*Honorary President :* THE PRINCIPAL.

*Chairman of the Faculty :* MR. D. T. WESTON.

*Vice-Chairman :* MISS K. C. BUCKLEY.

*Secretary :* MR. J. C. VAN DEN BOS.

*Hon. Treasurer :* THE PRINCIPAL.

*Student Treasurer :* MR. R. ANDERSON.



## CONTENTS.

Students' Association Officers	1
Editorial	3
The Principal's Review	3
Down to Ducks....	5
Dairy's Dilemma	6
The Tom Foolery-Jive Boys	7
The Adolescent	8
Misapplied Quotations	8
If	9
A Student applies for a Job	9
The Birth of Spring	10
Misapplied Film and Song Titles	10
Flower now in Bloom	10
With Apologies to that Other Student Song	11
Puzzle	12
The Firewatcher's Hut or Remains of the Blitz	13
Get Nowhere Quick	13
To R.S.	14
Refresher	15
Career Women	17
All Hallowe'en	18
Stable Gossip	19
The College Play	19
Team Photographs	21
Dance and Social Committee	31
The Musical Society	31
The Choir	32
Student Christian Movement	33
Discussion Society Report	33
Horticultural Society	34
Men's Hocket Club	35
Women's Hockey Club	35
Mixed Hockey	36
The Soccer Club	37
The Rugger Club	37
The Netball Club	38
The Billiards and Snooker Club	38
The Table Tennis Club	38
The Men's Tennis Club	39
The Women's Tennis Club	40
The Cricket Club	40
The Athletic Sports	41
Students' Association Diary	44
Old Kingstonian News	50
List of Students during Session	70

## EDITORIAL.

This year we submit for your approval the first post-war Magazine, and we hope that you enjoy its contents as much as we have enjoyed reading the originals.

The Committee are to be praised for the way they have given time and enthusiasm towards the compiling of the 'mag,' and would especially like to mention their appreciation of their publicity agent, Gittens, whose vivid posters and drawings have done so much to rake in the material.

We hope that you will agree that in this case a female majority has not prejudiced the results of our efforts!

## THE PRINCIPAL'S REVIEW.

The session, 1945-46, has been a very important one in the history of our College. Certain conclusions reached two years ago suggested that there was only one solution of our own future, namely re-absorption by our original parent body. But the progress in this direction has been more rapid than was visualised even a year ago. We thought then in terms of a transition period that would cover some five years during which time discussions could take place concerning our ultimate organisation as a centre of higher agricultural education. The Loveday Report on Higher Education Agricultural (Command 6728, H.M. Stationery Office, 1/3 net) and certain legal difficulties have made it necessary to review the policy that had been approved by the five county councils who have played so important a part in our development. Briefly, the new proposals are that the University College of Nottingham will repay to the former partner county councils the capital grants that they have made in respect of the Midland Agricultural College. The transfer of the property when approved will date from 1st April, 1946, and the Midland Agricultural College will have ended its separate existence.

The future pattern of our work must obviously be moulded on the needs of the area that we serve, but it must be recognised that much with which we have been familiar in agricultural education is in the melting pot. On the 1st October next the National Agricultural Advisory Service comes into being. The control of advisory work will pass from the College as the headquarters of the provincial advisory service to the Ministry of Agriculture's direct control, and the same thing is true of county advisory work. It is necessary to recognise also that the County Councils in our former province are acquiring farm institutes to provide courses of certificate character. The Loveday Report has assigned to us two main tasks. These relate to the ultimate development of the College for the training of candidates for degrees in agriculture and horticulture. In agriculture we are very well equipped but our horticulture department has to be considerably strengthened in certain respects before it can rank



on an equal footing with the agricultural section. Plans have been approved for this development and these involve an expenditure of about £15,000 in the next twelve months on new glass houses and horticultural equipment.

Many former students in dairying and poultry husbandry will wonder what is to be the future of these respective departments. The purpose of dairy education has changed very much in the last twenty years. Farm-house butter-making and cheese-making no longer provide an important source of income to the dairy farmer. In consequence the kind of dairy training that is being provided at the present time is very much out of date and not entirely suited to the needs of those who desire to spend their working lives in milk-processing factories. The Loveday Report regards dairy education for this latter purpose as being outside the sphere of normal agricultural education. One is compelled to agree with the soundness of this viewpoint when faced with the problem of adequately equipping a dairy department with all the machinery that is now used in commercial dairy plants. Most of those who have followed the course for the Diploma in Dairying in recent years have taken up work that has been concerned either with dairy husbandry or dairy microbiology. Work in dairy husbandry is in reality a specialised form of agriculture and we shall concentrate increasingly on this activity. The problem of training dairy factory Technologists will not be solved so easily, but we have to accept the fact that we are not equipped for this activity and in any case it is not regarded as our job.

Specialists poultry advisors of the future will tend to be people who have obtained a degree in general agriculture and who have followed this with a post-graduate course in poultry husbandry. It is considered important however that poultry husbandry should be just as much a part of a general agricultural degree course as pig-husbandry, for example. This means that there is no intention of our ceasing to provide poultry training, but rather that the emphasis and purpose will be changed. In other words, the present dairy and poultry departments will exist to meet the needs of fundamental training in agriculture together with specialists post-graduate work.

These changes will have to be effected by stages. We shall continue to provide our present diploma courses for a period of five years or so, but it is only right to give warning to those who seek to carve out for themselves a career in agriculture and horticulture, that in future the richest prizes will be reaped by those who possess the best qualifications. We shall strive at this College to build on the soundest of practical foundations, believing that there can be no future for advice unless it commands the respect of the man in the field, but also convinced that sound education of itself can do much to build up a worth-while country community who pride themselves on their efficiency.

H. G. ROBINSON.

## DOWN TO DUCKS.

Morning on the Poultry Farm.

Andrews picked up a couple of buckets and threw the labels at the table. One landed and one skidded off onto the floor.

"I'll go down to the ducks this morning," she said, and strolled away down the path. She was in no hurry. The day had that pleasant air of dreamy innocence which made work seem a trivial intrusion.

Against the battery the other two caught her up with the trolley and a bin of battery mash. She waved over her shoulder and continued her walk.

"Mind you don't hurry," said one of them, but without effect.

She started singing, "I'm thinking to-night of my blue eyes." She thought of her boy friend (College) and her other boy-friend (home). Neither had blue eyes.

At the gate of Pen 1 she stopped singing and thought about ducks.

The Aylesburies waddled out, bobbing their heads suspiciously. Nice, quiet, well brought-up birds. She might keep Aylesburies. Two of the eggs were faintly tinged with pale green. She, herself, liked herself to see a green shelled egg. If it was inherited one could look up about inheritance of egg-shell colour.

The Khaki Campbells spluttered out with a great beating of wings. Khakies were all very well, she thought—

Muscovies were funny ducks: ungainly, but fascinating. She knew a man who kept muscovies. Quite a nice man. If she wanted Muscovies anytime, she could get them from him.

A car went past on the road, a small green car, a bit dusty. It was one of those mornings when the smallest things seemed terribly significant. Ahead of her the hills were clear and crisp against the morning sky. Nothing moved, nothing lived. The world was right, and simple: nothing else mattered.

In years to come, she thought, I'll think of this place, and I'll remember to-day, standing here, and that car going past like a fussy green beetle the other side of the hedge.

But perhaps she wouldn't want to remember. Perhaps she would leave in disgrace, having failed all her exams and wasted everybody's time. What an awful thought. Or was it? Did exams and things really matter? They couldn't matter to her as a person. A lot of people didn't. They just ate, slept, worked and played, and were never really there at all. How awful not to be. Of course they didn't know they weren't, so perhaps they didn't mind. But what if she wasn't either?



The troupe of ducks rushed past her feet, and the scene came alive again. She retraced her steps, swinging the empty buckets; through the gate, up the muddy slope towards the Battery.

Mary Wynne was standing by the Battery, looking at nothing in particular. Andrew waved to her, and quickened her steps.

Wynnie stared, and without warning started to run. Have you ever seen an elephant galloping? It's an awesome sight. Andrews, puzzled, hurried after her.

At the top, it seemed, everyone was waiting for her.

Whispering students clung together behind the Staff. Miss R., their imperturbable Miss R., looked upset—worried, and furiously angry.

"Miss Andrews, where have you been?" she said.

"Down to the Ducks, Miss R." said Andrews nervously

"And where else?"

"Nowhere."

"You don't mean to tell me you've been down there three weeks," said Miss R. sarcastically.

"You weren't there yesterday," said someone.

"You weren't there last week."

"You've not been there at all."

The chorus was accusing, angry.

Andrews felt suddenly sick. She looked from one to the other, bewildered.

"I've been down to the Ducks," she said, "I've been down to the Ducks."

#### DAIRY'S DILEMMA.

Two Dairy Dips stayed hearing Bing.  
It was so grand to hear him sing.  
For the next lecture they were late.  
And this is how they met their fate.  
Practical Chemi was to-day,  
A subject where you must not play.

They did not get their notes down right,  
Although the slip was only slight  
And on the crystals they did pour,  
A lot of H<sub>2</sub> SO<sub>4</sub>.  
Alas! there was an awful smell,  
They should have added HCL.

There was no sign of chlorine gas,  
So getting cheesed, the silly ass,  
Warmed up the brew to see if now  
They could get chlorine gas somehow.  
Not thinking what they were about  
They shoved some paper down the spout.

The stuff went "Wuff." the test-tube burst  
But this was really not the worst.  
If it was not explosion proof  
The Chemi Lab. would have no roof,  
And there, to be seen by all  
Are large black blobs upon the wall.

But even worse, with coupons short  
They made holes they didn't ought,  
And woe betide when Mother's eye  
The perforated pants did spy.  
So let this lesson sink to all,  
For Chemi wear an overall!

V.J.

#### THE TOM FOOLERY-JIVE BOYS.

For further information 'phone Whitehall 1212.

This unique band consists of:

2 tin whistles, 1 narrow stemmed watering can, 1 half  
whistle ( $\frac{1}{2}$  pea missing). Range of lemonade bottles  
with varying plimsol marks. Also, a harp (passed on  
to us from a recently departed member of the band).  
A pair of castors. we have not yet been able to find  
any nets.

Sessions—Room 25, each Saturday, followed by a prayer  
meeting.

Our renderings of the following are noted, i.e. "render"  
meaning—to melt down, break, submit—

Waltz in A Flat—"Mayfair."

Cobbler's Waltz—Shuman.

Ducking Song—Sousa.

Pub-crawlers' Song—Offen bach.

Woodcutter's air—Chopin.

Whiteness Song—Purcell.

Cook's Mistake—Beethoven.

London (demob.) Suit (e)—Eric Coates.

The Air WHISKEY—In A Major.

and ended by the Refrain from spitting.

TOM FOOLERY.



This weaks deliberate "Quiz"—

With what do you connect GORE-BROWN?

Answer—A hyphen.

### THE ADOLESCENT.

Life's vista opens before me—  
With eager hands I go forward,  
As one feeling in a darkened hall  
For the hook on which to hang his hat.

At present I am groping in the dusk  
Hurrying on to draw aside the veil  
And see the mysteries revealed to me,  
To try and discover the purpose of time.

How long, how long, before my questions are answered  
And my life made whole and complete?  
Time passes by and carries me on  
Still half-child, half-man.

When shall I outgrow this bursting Spring—  
And pass into the steadier days of Summer?  
And will my autumn be a warm, brown-golden thing,  
Only to die at the first keen Winter frost. N.J.B.

### MISAPPLIED QUOTATIONS.

P. Marsden—"Never was such a sudden scholar made."—  
Henry V.

J. Mount—"You know me by my habit."—Henry V.

On entering a 1st Agri. lecture room—  
Not opening hill itself could blast  
Like what I saw.—*Marmion*.

Miss Edwards to 1st or 2nd year Hortis:—  
"Let's have no more fooling"—*Merchant of Venice*.

Tiny Cooper—"He will live to be a man"—*Merchant of Venice*.

E. Rundle and P. Taylor—  
"They conspire together."—*Merchant of Venice*.

Inside the Women's Hostel—  
"A sight to dream of."—*Coleridge*.

The Newts—  
"Gentlemen in claret, sober as a vicar,  
Gentlemen in tweeds, dreadfully in liquor."  
"Rhyme of the Rail," by J. G. Saxe.

Webster—  
"He doth sing as sweetly as a lark ? ? ?"—*Merchant of Venice*.

### "IF".

(With apologies to Rudyard Kipling).

If you can rev. your engine while all about you  
Are stalling theirs and blaming it on you ;  
If you can start a Fordson when the water's frozen,  
And the cursed feed pipe's bunged up too ;  
If you can crank and not be tired by cranking,  
Or having stopped it don't deal in stops,  
But keep it going while it feels like moving,  
And yet don't go hell for leather past the cops.

If you can go—and not go any faster ;  
If you can swear—enough to make a parson faint ;  
If you can back and never meet disaster  
Or hit a wall and never scratch the paint ;  
If you can bear to see the nuts you've tightened  
Rattling loose just to make you really mad,  
Or hear four big ends go, and not be frightened,  
And yet don't look too pleased nor yet too sad.

If you can make one heap of all the odds and ends  
And chance whether you get them back again,  
And lose a nut and tie with string the con-rods  
And never breathe a word about the strain ;  
If you can force your Fordson and its entrails  
To pull a load up a damn great hill,  
You'll hear a noise that makes you stop and wonder,  
As if a stone has got in a hammer-mill.

If you can keep your engine roaring,  
And not let the water boil too much ;  
If you can tell that it wants reboring  
When neither cylinder nor piston touch ;  
If you can fill the paraffin tank with water  
And still make the engine run,  
Yours is the Fordson and all the trash that's in it  
And—what is more—you'll be a proper herr son !

D. FAYERS.

### A STUDENT APPLIES FOR A JOB.

Dear Sir,

In making this application to your firm I should like to recommend myself as being entirely honest (except with anything that will go into my pocket), always punctual (at opening time), and never seen without a spade (to lean on). I am an expert hand at cards, tiddely winks and poker.

In July, I shall be finished (mentally and physically) with my term of hard labour so if you do come across a job that does



not require any work to be done and provides a chauffer—send me a stamped postcard as quickly as possible.

I am interested in heavy cropping, dates with peaches. I am sure this is a line of interesting development.

My permanent address is:

"The Local," 5 miles run from M.A.C.

"ODIOUS."

### THE BIRTH OF SPRING.

On a cool clear day in February with a lightening wind in the sky, The plough lay rugged and tawny, the turf smoothly green close by. Along by the hedgerows a lark had rested with delicate fairy tread; The morning was bright and joyous, with none of the wintry dread Of the following hours of coldness and the nights so grim and dark. Here once more! this ever new enchantment to make all men remark Upon the everlasting miracle of living, and being blessed with sight Or watching nature growing strongly from the darkness into light. With none to guide her, none to lead the way, her simple soul emerges

As a child awaking to play. The new green clothes field and hedges With colour warmth and life. Amazed, men see life's greatest truths,

The wonder of birth and living, the vigorous faith of youth. J.S.

### MISAPPLIED FILM AND SONG TITLES.

S. Brammer—A Lady takes a chance.

Mr. Calder in his car—Coming in on a wing and a prayer.

Men's Common Room—18th century drawing-room.

Night before the exams.—Hold back the dawn.

Tiny Cooper—The walking dead.

J. D. Straight, concerning women—Love, Honour and Goodbye.

Joe Cooper—I fall in love too easily.

J. Gledhill and H. Cheshire—Brief encounter.

Mr. Holden—These foolish "stings" remind me of you.

Kees—Shut the door, it's coming through the window.

JONES, A. G.

### FLOWER NOW IN BLOOM.

Now that June is here the charming, hardy perennial, "Kewensia Tarveri" Variety "Canadaensis," which has been in bloom for such a long time, is to be transplanted. We shall miss its large pannicles of colour in "Variety." when its "colours" were very much appreciated by all students. And in hoping that the new double variety will have success and careful cultivations, may we say how much we have appreciated the single variety in its stay here, and marvelled at its quick development which crowned by all the flowers of success serve as a shining example to all.

TOM FOOLERY.

### WITH APOLOGIES TO THAT OTHER STUDENT SONG.

Cycling down to Devon  
On a B.S.A.  
Unknown roads before us,  
Sunny, spring-like day.  
After days of swatting,  
Air once more was clear;  
We could laugh quite freely—  
Holidays are here!

Gaily on to Stratford;  
Made our number up.  
By the languid Avon  
Thought it time to sup.  
Then on through the Cotswolds,  
Reluctantly we leave,  
Feeling rather weary on  
The long hill up to Cleeve.

Cycled on to Tewksbury  
And Gloucester in the plain,  
Encountered Birdlip's gradient.  
It really was a strain.  
Pace was still quite steady,  
We next were bound for Bath;  
But to Malmsbury elusive  
We could not find the path.

At Bath we took the waters,  
Found them rather mild;  
Pushed on through the Mendips  
To Cheddar's black rock piled.  
Puncture just through Axbridge,  
Thought we'd end our run,  
Spent the night at Biddisham,  
Primitive, but fun!

Cycling up to Exmoor  
Came to a dead stop.  
Porlock's bulk stood in our way  
And we would reach the top!  
Primed ourselves with cider,  
Attacked the hill with zest;  
Cider rather heady—  
Forced to take a rest.

Free wheeled down to Brendon,  
Thought of Lorna Doone;  
Said, "If rheumatism's fatal  
We'll be joining her quite soon!"  
Left the old Doone Valley,



Laughing, liling Lyn,  
Fled down Countisbury,  
T'was Devon we were in!

Pantingly we faltered,  
Met with Lynton hill;  
Gradient was one-in-four,  
Heat was fit to kill!  
Wearily to Witheridge  
Where we stayed a day,  
Drove North Devons to a sale—  
Our busman's holiday!

Cycling home from Devon  
Caught some heavy rain,  
Surely shoes so sodden  
Would never dry again!  
Caught a train at Taunton,  
Why did people stare?  
Went eventually to Wells  
Via Weston-super-Mare.

Cycling up to Marlborough  
Wind was at our backs;  
But struggled into Oxford,  
'Cos the wind turned in his tracks.  
Succumbed to Oxford's atmosphere.  
Sighed sentimentally  
At pale and stately colleges—  
Far cry from M.A.C.

We cycled down to Devon  
On the Western road;  
Feel as fit as fiddles,  
Legs are far from bowed.  
If you should wish to try it  
But still feel rather green,  
Steam up well beforehand with  
Tablets of Ovaltine!

S.G.C.

# PUZZLE.

I	L	D	R	S	U	C	N	W	E
N	C	O	E	O	F	H	U	S	S
C	O	R	F	X	F	O	P	E	H
H	L	N	T	N	O	L	K	X	I
E	V	I	O	E	V	E	J	E	R
R	E	A	Y	W	T	D	Y	E	S
E	R	N	R	O	H	T	R	O	H
T	I	H	S	L	D	O	R	S	E
S	E	C	I	E	S	P	E	W	T
T	N	E	K	L	A	R	G	H	I

Read vertically and horizontally only and find 17 breeds of animals  
Answers on page 13.

## Answers to Puzzle page 12.

Horses—Suffolk Punch, Shire.  
Cattle—Lincoln Red, Jersey, Devon, Ayrshire, Shorthorn  
Sheep—Oxford, Kent, Dorset, Leicester, Cheviot.  
Pigs—Lop, Wessex, Old Spot, Large White.  
Unclassified—Newt. W.A.T.

## THE FIREWATCHERS HUT or REMAINS OF THE BLITZ.

Strange and lonely we did feel  
As into blankets we had to steal,  
With our vivid dreams so far  
Of forsaken Ma and Pa:  
Oh, the futility of it all!

Bleak and cold at first it seemed  
As no comfort in it gleamed,  
Being already full of dread  
As to how we should be fed.  
Oh the futility of it all!

Was it a study I saw before me?  
I saw it then, but now, surely,  
Thro' this room of many tales  
Have passed of wenches and their males.  
Oh the futility of it all!

Its fire, thro' term and vac. has cooked  
Much kitchen food that has been hooked.  
Of fat and fag the air is blue—  
And language adds further to its hue!  
Oh the futility of it all!

And so valiantly on we must strive  
To do no swat but keep alive,  
That we may dream of days ahead  
Of happy nights and meals in bed.  
Oh the futility of it all!

HUWARTLL.

## GET NOWHERE QUICK

—by Eva Brick.

Any resemblance in the following either to sense or to anything heard in this College is purely coincidental, and should be remembered for ever.



Lecturer : In my last lecture I was saying that  
the merest trace contains  
literally thousands of 'em and results in  
a sink of iniquity.

Student : S—I—R.

Lecturer : Shoot the Sherbert, Herbert.

Student : It reminds you of a piece back when you told us  
to cross that out, and to put see later, which latter  
in effect you didn't see to.

2nd Student (*coming in late*) : Crumin' 'Eck I'm late ! 'Ow do.

Lecturer : Where was I ?

Student : Playing silly beggars.

2nd Student : I'll second that.

Lecturer : Shut you up. Happen might I was.

Student : Merry clappers ! He admits it.

Lecturer : Stop whittling, man ; vellike I said definitely every  
nightly or something of that type.

Student : Bur—r—r—r.

Lecturer : What's that ? A Derbyshire Gritstone.

Student : No, time, sir.

Lecturer : Ah ! very good.

Moral : Ill gotten fame never pays.

Thirty pet phrases—Whose are they ? R.K.C.

### TO R.S.

You were waiting miles away  
In a plane, for light of day ;  
Watching for the "green" to show,  
Telling you to jump below.

You looked your comrades faces o'er,  
Seeing as you'd never seen before,  
The peace and courage there that lay,  
As they thought of dear ones far away.

Then you were dropping through the sky,  
Trying not to think how many of you soon might die  
You thought of those below who lay,  
Waiting for you by night and day.

The earth of France rose up to meet  
Men who struggled to their feet ;  
And some—well, shall we ever know what befell  
Those boys, who went for us, thro' Hell ?  
M.S.H.

### REFRESHER.

My greetings, cads, I mean you all,  
All you who stand, or sit or sprawl,  
I'm just here as some may know  
To study form, and see the show.

Now, sport's the first thing we'll discuss,  
That's most important here to us.  
Of cricket there is no denying,  
Poor Percy found it rather trying.  
Yet who would watch to make it worse  
Was Faith, who dared to be his nurse.  
The tennis stars are much the same,  
Patricia, now, is quite a flame.  
Girls of to-day will have their fling,  
Alas ! for Kees it's not the thing.

There's Joe who heads our censored sheet,  
A different girl each week does greet.  
Some say the garden is to blame ;  
Now Babs is going to change her name—  
In other words housewife become  
With trials and error, call this fun.  
Last Fanny's not too bad they say,  
But oh ! to be with her each day.

To one of old it does amaze  
That B.S.C.'s and N.D.A.'s,  
Resort to pastimes, shafting, snogging,  
With little Sue, or Loose-Box Dobbin.  
In bygone days one dare not rise  
To venture far from Prinny's eyes  
So let's return beneath his care,  
Or like men of old just stick to beer.

Now, dear old Bert has not departed,  
Result of war a harem started,  
By ancient rights knocks one the flatter  
To have monopoly by the flapper.  
The poultry plant, you must confess  
Is alarming to the male unless  
Signs which give an interloper  
A bit more scope in spite of Roper.

The Dairy Staff with Annie P.,  
Will lecture some, but never me.  
Yet from the source of cow byre breezes  
We sometinmes get all sorts of cheeses.  
Of dairy maids—oh ! what a lot.  
There's some who kiss, and some do not.  
So to those chaps who fain would dare  
Instead of milk resort to beer.



Within the precincts of our College  
 George gives to one and all his knowledge  
 And in those moments of re-creation,  
 Would rather see a brighter nation.  
 Dear Milly emblem for gallons million,  
 So sad her death to bygone billion—  
 Why not set to, and resurrect  
 For in days of old, her did respect.

Across the road there does arise  
 The Elms as ever with its flies  
 Its bugs, spiders, ants and things  
 Pedagogic bipeds and those with stings.  
 There's iron with sides all bits and pieces  
 Who makes this life his daily thesis.  
 We hear to move, is contemplate—  
 Alas! alack this hand of fate.

So now, at last, I've all but done.  
 A little advice I'd give to some,  
 That's those who ever want to shirk.  
 Aras, Seris, Metis in front will ever lurk,  
 So work, while you work, play while you play,  
 Whether for good you leave or if you stay.

V.J.W. Per ardua ad astra.



G'ARN ART THOU SLEEPIN' THAR B'LOW !!!???!!

(JH)

## CAREER WOMAN.

My child, I think you're very rough,  
 This curd I see, is much too tough,  
 I think you must have over stirred  
 To get this most peculiar curd.

The temperature is much too low :  
 The whey is very white, you know,  
 And by the fat in the whey—I see,  
 You'll never get your N.D.D.

And all this water on the floor  
 Makes me wonder more and more,  
 With buckets all around the place,  
 I wonder you dare show your face.

And if by next September, you  
 Are wondering what you're going to do  
 Just litch your wagon to a star  
 And be a Midland Agri. char.

FIVE DAIRY STOOGES.



WOT! - NO ICE?

REN



## ALL HALLOWE'EN.

On Hallow'ene we thought that we  
Must really go out on the spree.  
So slamming books and pencil down  
We cycled to the Rose and Crown.  
"High Spirits" was the order then  
And fags, we had in number ten.,  
All went very well until  
We started mounting Sutton Hill,  
Where to our horror we did spy  
The Local Policeman cycling by.  
"Where are your lights" his stern voice said,  
(Why does this gin go to your head)  
To cut the story very short  
We must appear at local court.



Aqri Types

EG

## STABLE GOSSIP.

Betting started well, Percy having Faith that he would canter to the finish. The course needed more attention as a Hard-stone spoilt Laurie's chances. Later, after much wear and tear, Sandy patches found Mary's weak points.

Down by Scotland Wood, the Fuzzy patch, by the Ash tree, where *the* two goggle-eyed love-birds were sitting, was where Pete thought he might improve Lizzie's performance.

Gallops were prominent and Sue thought a nice piece of Duff was good compensation for being left behind the bunch, which, Owen to Gerry being there, caused a Kees of Redgate waters to be used to wash down Jerry's Moonstruck.

Nobby, who would Shepherd Pete into the saddle of Martin, was still fancied, although, according to pedigree, the Major's daughter gave Baaasil a favourite's call over. 'Lainey lost a Rusty shoe near the Warren, and the dry course made Harry drop back for want of Maur-rain, whilst Jackie Quarm rode by on Automo-Beal.

Jimmie's Bay (Che)shire got stuck on Gled Hill But the two Scotch horses, Mac and Mc raced by the spud (stud?) shed neck and neck, missing Wall who found June a nice month for racing, although Gee got Hurt.

Jockies like Harry nipped Beryl down Marly Pit hill making a long Knight of it for Vyv. Dorothy had a bad fall and was carried off in a Bedford truck.

Dennis was left beHind, whilst Jean riding a Belted Galloway—the latest French breed—created unprecedented sensations. Joe stopped suddenly with a Cickly feeling, and after the last bend, Jose Straightened out for the final lap, but Gladys whipped Dick quick to beat *the* two leading Sniffers by a short neck.

J.W.T., R.W., V.J.W.

## THE COLLEGE PLAY.

TILLY OF BLOOMSBURY—by Ian Hay.

The production of the play this year once more afforded great amusement to both cast and audience. The well known story of class distinction between the aristocratic family, the Mainwarings, and the Welwyn's of Bloomsbury gave great scope for acting of which many of the actors took advantage.



Outstanding performances were given by Richard, the easy-going son of the Mainwarings, and by Tilly, his lively and vivacious fiancée. The part of Stillbottle was acted realistically and well and gave much amusement to the audience, as also did the smaller but no less entertaining part of Grandma. The cockney youth Percy, was energetically portrayed and provided a striking contrast to the Reverend Rylands who maintained superb facial control in the exacting and difficult part, thereby gaining the entire approval of the audience.

On the whole it was extremely difficult to pick out any one actor as superior to the others, but it is sufficient to say that the entire cast played very well together and maintained the general high standard of the production.

The Committee wish to thank all those who did so much for the play during the rehearsals and behind the scenes. The help of Mrs. McDermott and Miss Tarver as producers was invaluable and the make-up by the latter and Mr. Shaw was excellent.

The stage-manager Mr. R. Gore-Brown is to be thanked for all the time he gave for the play and congratulated upon producing such suitable scenery.

Abel Mainwaring, M.P. ....	J. D. Straight.
Lady Marion Mainwaring	Faith A. Rollett.
Sylvia (their daughter) ....	Olive M. Hind.
Richard (their son) ....	I. L. Hurt.
Milroy (their butler) ....	P. H. M. Grayson.
Lucius Welwyn ....	J. R. Wilkinson.
Mrs. Welwyn ....	Ruth L. Cunningham.
Tilly (their daughter) ....	Brenda M. A. Martin.
Percy (their son) ....	G. N. Vaux.
Amelia (their younger daughter)	Nora M. Clay.
Grandma Banks (Mrs. Welwyn's Mother)	Sylvia M. Sussell.
Rev. Adrian Rylands ....	N. Wall.
Mr. Stillbottle (a sheriff's officer)	P. H. M. Grayson.
Constance Damer ....	Priscilla Williams.
Mr. Metha Ram (a law student)	P. J. Coates.

E. BARLOW, Hon. Sec.



PRIZE WINNERS ON SPORTS DAY, MAY 22nd, 1946.





**MEN'S HOCKEY, 1st XI.**  
 R. Gore-Brown, I. Sinclair, E. Lamming, J. Newenham, I. Hurt, J. Gledhill, Mr. Roebuck (Referee).  
 B. Smith, H. Warrenner, G. Holmes (Capt.), J. Wilkinson\*, P. Grayson\*.  
*\* Denotes Colours awarded.*



**WOMEN'S HOCKEY TEAM.**  
 P. Redgate, J. Bradshaw, J. E. Taylor, B.M.A. Martin, Mr. Roebuck (Referee).  
 M. Wheelhouse, G. T. Clarke, J. Richardson, E. M. Stewart (Capt.), M. D. Maddock\*,  
 D. M. Hickson, E. J. Nelstrop.  
*\* Denotes Colours awarded.*





#### MIXED HOCKEY XI.

P. Grayson, M. Wheelhouse, J. Newenham, J. Bradshaw, H. Warrener, M. Hickson,  
E. Lanning, J. Richardson, G. Holmes (Capt.), E. Stewart, J. Wilkinson.

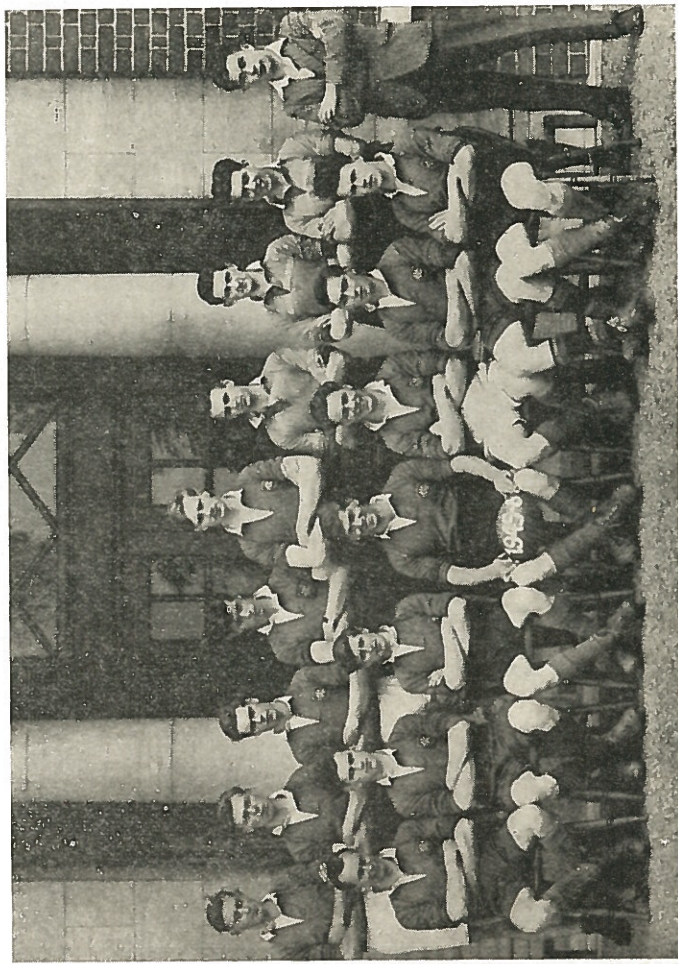


#### 1st XI SOCCER TEAM, 1945—46.

Mr. Jaranderson, G. D. Wilkinson, J. Pepper, Mr. Doxy, W. Marriott\*, J. Quarmby\*, Mr. E. Lester,  
(Hon. Sec.) G. A. Knight.  
J. F. Bayes, M. R. Haines, C. J. Van den Bos, (Capt.), H. Crane, G. Kenworthy\*.

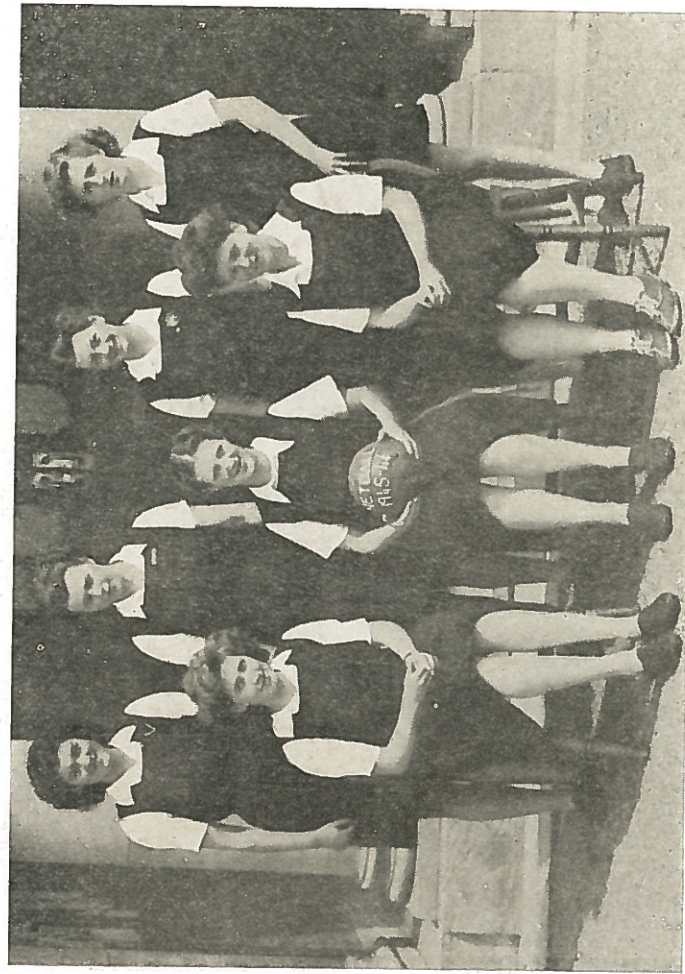
\* Denotes Colours awarded.





**RUGBY FOOTBALL, 1st XV**  
 E. R. Ward, R. D. Upton, G. Bowman, L. H. Bannister, J. Lones \*, G. Parker, A. Jones, A. H. Ingram, G. N. Vaux (Referee).  
 J. W. Thurley, V. Stanfield, P. I. Hill \*, F. Duffin (Capt.), \* F. H. Godley, J. Powell, D. A. Smith.

*\* Denotes Colours awarded.*



**WOMEN'S NETBALL.**  
 M. Odgers, A. P. Burrows, J. M. Smith \*, N. Kirk.  
 F. E. Barlow \*, J. Chapman (Capt.), R. Cunningham.

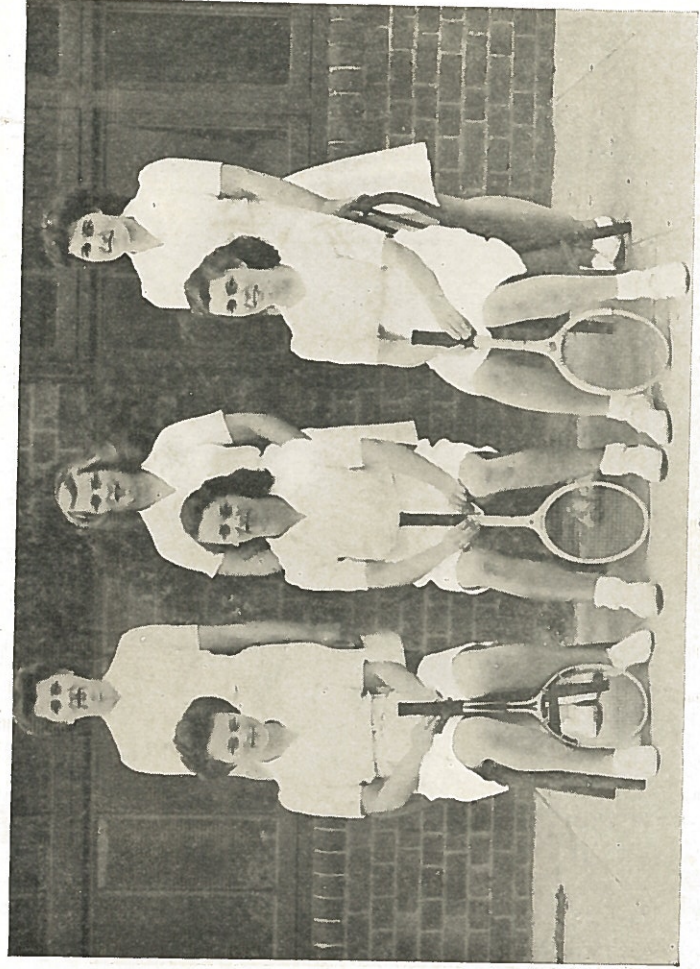
*\* Denotes Colours awarded.*





**MEN'S TENNIS, 1st TEAM.**

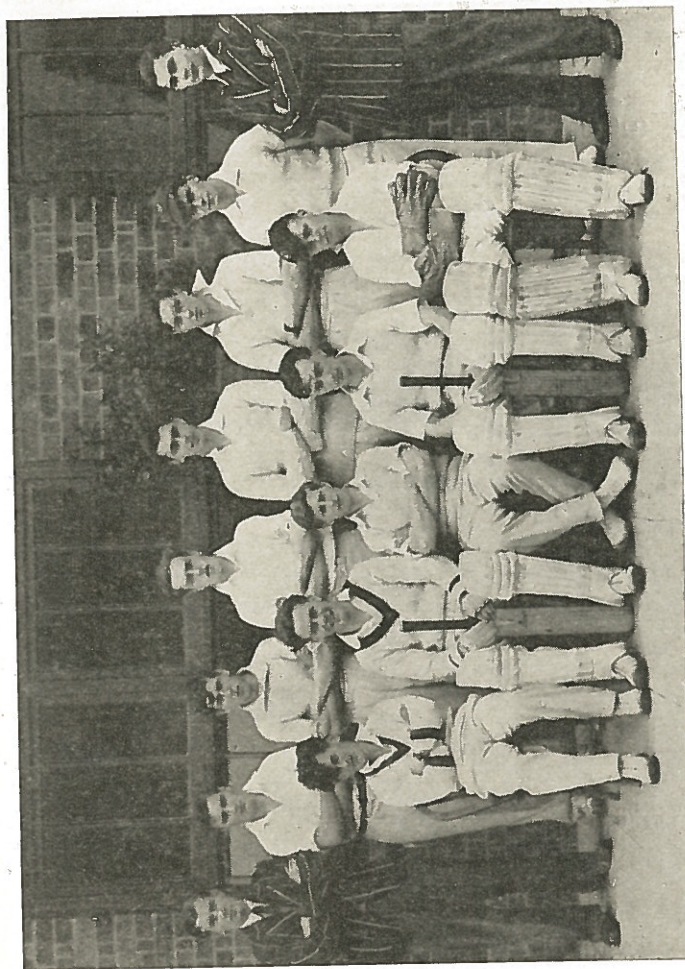
B. J. Edwards (Hon. Sec.), J. H. Gledhill, R. J. Blanks, R. G. Kenworthy.  
J. R. Mount, G. D. Wilkinson (Capt.) J. Quarmby.



**WOMEN'S TENNIS, 1st TEAM.**

A. Hill, J. Taylor, B. Merryweather.  
E. Stewart, P. Redgate (Capt.) J. Richardson.





**MEN'S CRICKET, 1st XI.**  
 R. Gore-Brown (Scorer), B. Gosney, R. F. Haddock, J. D. Straight, M. G. Biggs, J. D. Powell,  
 P. W. Lambert, G. N. Vaux (Umpire), J. R. Wilkinson, P. M. H. Grayson,  
 M. R. Haines, F. H. Godley, P. I. Hill (Capt.).

## DANCE AND SOCIAL COMMITTEE.

At the beginning of the session, dancing was very popular and students were enthusiastic. This year we were unable to form a band, hence we relied entirely upon gramophone records for most of the dances. A wireless pick-up was purchased and was used to good purpose, but the loose-box wireless was hardly powerful enough for the job and amplification was unavoidably far from being ideal. Loose-box dances were held on Wednesdays and Saturdays during the first term, but the Wednesday night hop was cancelled for us owing to the effect upon swat hour in the Women's Hostel.

We have been allowed three dances a term in the Main Hall this session, all of which have been fairly successful. The beginning of term dances have been by radiogram. At Christmas end of term and Easter mid-term, music was provided by the Hunt Sisters' Accordion Band. The Broadway Boys were in attendance at the dance marking the end of the Easter Term.

At each Main Hall dance a Buffet was run in Room 1, and I should like to thank all helpers on behalf of the Committee.

Shortage of supply of suitable dance records has prevented us from changing our stock as much as we should have liked.

On behalf of the Committee, I should like to thank J. W. Thurley for his help in running every dance held in the College this session. I feel sure you will all agree that we should have been at a loss without "John's" technical administration, conscientiousness and regularity.

I hope the members of the Committee returning next year will keep up the good work.

P. I. HILL.

## THE MUSICAL SOCIETY.

The Musical Society can be said to have undergone a revival this year, there being quite a number of new students interested in music of a Symphonic type.

During the Autumn term several enjoyable gramophone concerts were held, Elgar's Violin Concerto being among the works "played."

A piano recital was given on 3rd March with Maud Randle, a very talented artiste from Leicester, as the soloist. This concert was a great success and everyone seemed to enjoy it.

We followed it up with a concert of violin and piano music on 28th April, played by Barbara Harris and Barbara Fountain. This was not so well attended, but all those present enjoyed themselves.

We hope to hold more concerts during next year and to interest more people in music.

J.E.



### THE CHOIR.

In the Autumn term the Choir was formed and many enjoyable hours were spent in singing. At the end of the term a carol service was held, in which the Choir sang two songs. The service was conducted by the Dean and there was a good attendance the singing reaching a high standard. The collection in aid of the International Student Service amounted to £3 5s. 6d.

A large group of students formed a party which went carol singing in the outlying areas of Sutton Bonington; £4 2s. 6d. was collected for the National Childrens' Home and Orphanage.

In the Spring term it was decided to give a short concert with the Choir providing the principal items. Many hours of practice resulted in a good performance, which was made possible by the faithful attendance of our accompanist Dilys Greenwood. We should like to extend our gratitude to all members of the Staff and other students who all contributed to the success of the concert. The silver collection realised £6 7s. 0d., which was sent to the World Student Christian Federation.

F. E. BARLOW.

M. D. STEVENSON.



### STUDENT CHRISTIAN MOVEMENT.

Our activities this year have been confined to a few meetings of general interest, our most outstanding speaker being Dr. Schwietzer who spoke on the Church in Germany.

A student service was held on the 17th February at Kingston Parish Church, conducted by the Rev. Martin, assisted by students. There was a good attendance and much interest was shown by the residents of the area. A collection of £3 2s. 0d. was sent to the World Student Christian Federation. During the following weeks social services were performed by the students, £2 12s. 7d. being raised.

Sam Cookie of West Africa gave a very interesting talk on Education in West Africa.

We are not arranging many meetings for the Summer term since we like to spend our free time in the open air.

G. M. HODSON.

### DISCUSSION SOCIETY.

The Discussion Society has had a very satisfactory session, with lectures and film shows on many and varied subjects. The Committee decided that there should be lectures on other subjects than Agriculture and accordingly arranged for two on Foreign Affairs and one on Music. I am sure that all those who attended these lectures found them extremely interesting. It was also decided to hold several debates during the session and it was most satisfying to have some really good speeches and interested discussion.

Our programme during the session was as follows :

1945.

October 22nd Debate—"Co-education in England is desirable."

Nov. 1st—Lt. Clizer "Agricultural Training in the United States."

Nov. 9th—Staff and Students Brains Trust.'

Nov. 13th—Mr. Wilson—Film Show. "Cement and Concrete as used for Farm Building Construction."

Nov. 26th—Mr. J. H. Thompson—Film Show—"The Production and use of Basic Slag."

Nov. 26th. Mr. K. G. Knowles—"The San Francisco Conference"

Nov. 27th. Mr. F. R. Home—"The Work of the National Institute of Agricultural Botany."

Dec. 7th. Film Show. "The Implements produced by the International Harvester Company."

Dec. 13th. Mr. S. F. Martin—"The Conditions prevailing in Germany."



1946.

- Jan. 22nd. Debate—"Life in the Olden Days was preferable to Life to-day."
- Feb. 4th. Miss Hallam—"The United Nations Organisation."
- Feb. 12th. Debate—"This House considers that further mechanisation is necessary for the continuance of a profitable farming practice in this country."
- Feb. 18th. Mr. F. M. Laming—"Light Music."
- Feb. 21st. Film Show—"The Production of Sugar Beet and the Refining of Sugar from it."
- Mar. 4th. Mr. Whyley—"The Work of the National Farmers' Union."
- Apl. 25th. Film Show—"General Interest."
- May 7th. Professor Scott-Watson—"Science in Agriculture."
- O.M.H.

### HORTICULTURAL SOCIETY.

A Meeting of the Horticultural Students was held on Friday, 2nd November, 1945, and it was decided due to the large number of students taking this subject, to form a Society.

The following Officers were elected by vote:

<i>Honorary President</i>	....	C. E. Hudson.
<i>Vice-President</i>	....	Miss B. M. Tarver.
<i>Chairman</i>	....	J. T. Cooper.
<i>Secretary</i>	....	Miss G. T. Clarke.
<i>Treasurer</i>	....	D. R. Dewhurst.
<i>1st year member</i>	....	Mrs. J. Ellis.
<i>1st year member</i>	....	J. F. Murray.

Since the formation of the Society the following lectures have taken place:

- 26th Jan—Ministry of Information Film Show.
- 1st Feb.—"Deficiencieies in Farm and Garden Crops" by Mr. Cranfield.
- 14th Feb.—"Bulb Cultivation" by Mr. W. F. McKenzie.
- 25th Feb.—"New Varieties of Fruit" by Mr. Potter.
- 3rd May—"Electricity in Horticulture" by Mr. Golding.

G.T.C.

### MEN'S HOCKEY, 1945-1946.

The prospects of a hockey team at the beginning of this season were far from bright as we had only three of our last year's team left. Fortuhately with the first year's came Grayson, Lammings, Sinclair and Newenham, the latter of whom filled the unenviable position of goal-keeper in which capacity he made himself worthy of note. This still left four positions to be filled and this was ably carried out by some new-comers to the game, Warrener, Hurt, Gore-Brown and Sykes, with whose co-operation we were able to turn out a keen, if not entirely accurate team.

When Mr. Dominy came in as centre forward the team was more closely co-ordinated and we were enabled to win our first match against Ericsons followed by the defeat of Loughborough College 3—0. Henceforth we gave as good as we got in all our games.

At the beginning of the Easter term, B. Smith offered his services, and took up the position of centre-forward showing great speed and hard shooting prowess in the subsequent matches. Other outstanding members of our team include Holmes, our energetic and confident captain, and the two full-backs, Grayson and Wilkinson.

The former played a superior class of hockey to the rest of the team once he had a settled position after several trials elsewhere. Wilkinson stopped many dangerous attacks by his steadiness and good tackling and his unfailing presence at critical moments to make a good clearance.

The team would like to thank Mr. Roebuck for umpiring the home matches, and Mr. Minter whose professional play and advice was very welcome.

Colours have been awarded to Grayson and Wilkinson.

Results.—Played 15, Won 6, Lost 9, Goals for 38, Against 42.

J.R.W., Secretary.

### WOMEN'S HOCKEY CLUB, 1946.

The season was well started by winning our first match against Rolls Royce. This good start was followed by four more successes during the Autumn term.

At the beginning of the Easter term some of our matches were cancelled owing to the weather, but the remaining matches were won.



The rivalry between the Hostels was keen but friendly, and helped to keep up enthusiasm amongst the players. Hostel and Departmental matches were played, and also a match against the Rugger team which caused great amusement.

The team was successfully captained by Miss Stewart, who played well and reliably all through the season.

At the end of the term the Women's Hockey and Netball team gave a display of Soccer, which was greatly appreciated by players and spectators alike.

Thanks are due to the Committee and also to Mr. Roebuck who proved to be a very fair referee and turned out in all weathers.

Colours this season were awarded to Miss Maddock.

Results—Played 13, Won 10, Lost 3. Goals for 59, Goals Against 25.

J. RICHARDSON, Hon. Sec.

#### MIXED HOCKEY, 1946.

This year has shown an increasing keenness to play mixed games of hockey. We have been able to put quite a favourable team into the field, being able on two occasions to put out two mixed teams on the same day with the result of a win and three drawn games, which was a very satisfactory result. During the season we have played U.C.N. twice, winning one game and drawing the other.

We have played Harper Adams Agricultural College on two occasions, the first game ended in a draw; this was mainly due to the inability of the forwards to find the goal in an overcrowded goal circle. In the return match at Newport, the made use of all their opportunities and backed by an excellent defence gained a worthy 7—0 victory.

The first mixed team has been chosen from:

Forwards: Miss Bradshaw, Miss Richardson, Miss Wheelhouse, Holmes, Warrener, Sinclair, Smith, D. W. R.

Defence: Miss Stewart, Miss Redgate, Miss Hickson, Miss Maddock, Lamming, Grayson, Newenham, Wilkinson.

The Results were: Won 4, Drawn 4, Lost 1. Goals for 31, Goals against 14.

J.R. & J.R.W.

#### THE SOCCER CLUB.

This year's first eleven was completely reformed, last year's team being represented by only two members, and they having changed their positions.

We were lucky to have a number of keen freshers to turn out for practices at the beginning of the season and were able to put together a team which I think was one of the best for many seasons. This is visible in the fact that for a number of past years our teams have been easily beaten by Repton. This season, however, we drew and on many other occasions were able to show our prowess.

The team played 20 matches; Winning 12, losing 5 and drawing 3.

The team was captained by C. J. van den Bos who set a fine example of team spirit which in times of emergency spurred the team to victory.

Students comprising the team were Marriott, Wilkinson, G. D. Knight, Kenworthy, van den Bos, Haines, Bayes, Quarmby, Craine, Norman and Smith.

The Committee would like to thank Messrs. Lester and Doxy for their services rendered to the team as guest players and to Mr. Jorunderson for kindly acting as our referee.

Colours have been awarded to J. Quarmby, G. Kenworthy, and W. Marriott.

In conclusion I would like to wish the team the best of luck in the coming season.

J. QUARMBY, Hon. Sec.

#### RUGGER CLUB, 1945-6.

Although this season has been unsuccessful regarding the number of matches won, most of the games have been enjoyable, special reference to R.A.F. Watnall away matches!!!

The main difficulty was the absence of a fast three-quarter line with sufficient weight to penetrate the usually heavier defences of the opposing teams. In one or two matches, however, the backs combined well to good effect. As the season advanced the team spirit improved, and some good tackling was witnessed.

The forwards were the mainstay of most of the games. Although combining well as a pack, loose play was occasionally ragged, this improved as the season advanced.

Mention must be made of Bannister and Weston, who were both injured early in the season—a rather heavy loss to the team.

A special feature of the First year's v. Second year's match, played during the Autumn term. Coates and Carke were much in evidence, and clutching hands robbed Rusty of his shirt and Punch of his shorts (nearly).

L.W.J.



### NETBALL CLUB, 1945-46.

This season we were pleased to see an increased keenness in Netball, and also a higher standard of play.

Fifteen matches were played including two friendly ones. The first of these was the large hostel against the other two, and after extra time the smaller hostels won by 1 goal.

The other was a very amusing and enjoyable game against the Men's Hockey team, which in spite of all distractions we won, 12-6.

To round off the season we challenged the Women's Hockey to a game of Soccer. This proved a welcome diversion from Exams., and after much unusual play, we managed to win 2-1.

Played 15, Won 6, Lost 9.

Colours awarded to J. Smith and E. Barlow.

E. BARLOW, Hon. Sec.

### BILLARDS AND SNOOKER CLUB, 1946.

During the Spring term the snooker table was re-clothed and the billiard table renovated, thus giving the club two good tables to play on.

The Club team, consisting of Messrs. C. J. van den Bos, R. Gore-Brown, R. Wilman and I. L. Hurt, have played against the Staff and Harper Adam's College and were fortunate in winning against Harper Adams but lost to the Staff.

The billiards tournament held in the Autumn term was won by R. Gore-Brown with R. Wilman runner-up.

The snooker tournament held in the Spring term was won by G. B. Wilkinson with R. Wilman a good second.

R. GORE-BROWN, Hon. Sec.

### TABLE-TENNIS CLUB, 1946.

This year, students have been fortunate in having two tables set up in the Loose-Box. Many enjoyable games have been played and table tennis seems to have been generally popular.

In the first term we ran a singles tournament for both men and women, and also a mixed tournament. G. D. Wilkinson won the men's tournament and Miss A. Hill won the Women's tournament. The doubles tournament, although taking quite a time to complete, was nevertheless very amusing and many of the matches were very close. The winners were Miss A. Hill and J. H. Gledhill.

On 25th October a match was arranged with the Staff, for both men and women. The students won by a clear margin.

A men's team also played against Harper Adams when they visited us in the first term and again when we went to Newport in the Easter term. Both times the club was victorious.

P. I. HILL, Hon. Sec.

### MEN'S TENNIS CLUB.

1st Couple—Wilkinson, G. D.. Quarmby, J.

2nd Couple—Mount, J. R. Blanks, R. J.

3rd Couple—Gledhill, J. H. Kenworthy, R. G.

J. van den Bos and B. J. Edwards have also played.

Matches played to date:

May 4—M.A.C. Women—Won.

„ 8—U.C.N. Mixed—Lost.

„ 11—U.C.N. 2nd—Won.

„ 15—Loughborough College 1st—Won.

„ 18—M.A.C.O.S.A. (mixed)—Abandoned owing to weather.

Matches have still to be played against: R.A.F. Medical Rehabilitation Unit (home), Harper Adams Agri. College (home), Loughborough College (away), Repton School (home).

There has been a fair amount of activity on the courts this season but no outstanding talent has been seen in action.

The club have a steady and reliable player in G. D. Wilkinson who is captain this year. J. H. Gledhill and R. G. Kenworthy have combined together well to make a strong pair.

We regret that D. T. Weston has not been able to take an active part this year and we hope that his disability will soon have departed.

Of the matches played so far it need hardly be mentioned that the men once more demonstrated their superiority over the opposite sex in the annual "do". U.C.N. Second were well defeated in the men's match. Loughborough College were narrowly beaten and R. J. Blanks and J. van den Bos had one marathon set (13-15) with the Loughborough 1st pair in this match. Rain washed out the match against O.S.A. but probably did more good than we should have done.

B. J. EDWARDS, Hon. Sec.



## WOMEN'S TENNIS CLUB.

Tennis has proved a popular game this year and there has been little difficulty in raising teams for the matches which have been arranged.

The 1st VI was as follows :

- 1st Couple—Miss Redgate.(Capt) Miss Richardson.
- 2nd Couple—Miss Hill. Miss J. Taylor.
- 3rd Couple—Miss Merryweather. Miss Stewart.

Other players were: Misses Cunningham, Wheelhouse, Nelstrop, G. T. Clarke, Rundle, Bradshaw, Kirke and Hickson.

The season commenced with a match against M.A.C. Men which was a good game as well as excellent practice.

The match between the two Women's Hostels was somewhat spoiled by the wind, but was enjoyed by the players and resulted in a victory for the large Hostel.

### Fixtures :

May 4—M.A.C. Men	....	....	Lost.
" 8—Inter Hostel	....	....	Large Hostel.
" 11—Derby Training College			1st VI. 59—58.
			2nd VI. Lost.
" 25—Derby Training College			1st VI, Won.
			2nd VI, Won.
" 29—The Staff			
June 1—Harper Adams Agri. College			—Abandoned.
" 5—Goldsmiths College			
" 12—University College, Nottingham.			

M. HICKSON, Secretary.

## CRICKET CLUB, 1946.

The Cricket Club started the session with fewer members than was anticipated. However, we were able to form a 1st XI and also have put out a 2nd XI.

The outlook at the beginning of the season was very promising for the 1st XI had a full fixture card, and the 2nd XI fixtures, although few, ought to prove exciting matches.

The condition of our cricket square this season is far below average and we shall have great difficulty in finding reasonably good wickets.

The 1st XI have already played three matches, losing two and winning the other.

Batting so far has not been up to the standard expected, and the team needs plenty of practice if we are to be successful in our remaining matches. Fielding also needs attention, although the condition of our out-field does not warrant very spectacular gathering of the ball.

Bowling in the 1st XI has been quite good and there seems to be plenty of talent in this line in the team. Haines has set up a fine standard by taking six wickets for 18 runs at Castle Donington and six wickets for 39 runs against Loughborough Town.

The 2nd XI have played one match against Derby Technical College. They lost this match mainly through lack of practice and not lack of enthusiasm.

As the season progresses we should be able to field two good teams and I hope we shall be in a position to win most of our remaining fixtures.

P. I. HILL, Hon. Sec.

## ATHLETIC SPORTS, 1946.

Sports Day was held this year on Wednesday, May 22nd, under ideal weather conditions.

A number of results were decided before Sports Day but no records were broken. However, P. I. Hill and H. M. Warrenner won the Cross Country and the 2½ miles Road Race respectively in very good style.

P. I. Hill carried on his good work, and on Sports Day won the coveted Victor Ludorum Shield, securing 35 points for his County. J. Quarmby was runner-up being only two points behind. The Victrix Ludorum was Miss O. Hind, who gained 23 points, Miss Wheelhouse being runner-up.

Notts. and the North, obtained an average of 3.23 and received the Robinson Trophy, and Lincs. and the East came a good second. Special mention must be made of the way in which the Notts. and the North team broke the relay record by 4 secs. Later in the afternoon the prizes were presented by Mrs. Weston, the Chairman's Mother.

The Committee would like to take this opportunity of thanking the Judges, Timekeepers, and everyone else who assisted in making the day such a great success.

### 1—Cross Country Race—Men (The Staff Cup).

- 1, P. I. Hill ; 2, R. Haddow ; 3, D. Smith.
- Time—37 mins. 8 1/5th secs.

### 2—2½ Miles Road Race—Men (The Milburn Cup).

- 1, H. M. Warrenner ; 2, R. Haddow ; 3, I. L. Hurt.
- Time—14mins. 52 secs.

### 3—Women's Mile (The Hunter Cup).

- 1, J. Richardson ; 2, M. Wheelhouse ; 3, J. Lindsell.
- Time—6 mins. 40 secs.



- 4—Place Kick—Men.  
1, C. J. van den Bos; 2, J. Pepper; 3, M. Haines.  
Distance—54 yds. 2 ft. 2 in.
- 5—880 Yards—Men.  
1, P. I. Hill; 2, H. M. Warrener; 3, B. A. Woodward.
- 6—100 Yards—Women. (The Turnor Cup).  
1, E. M. Stewart; 2, O. Hind; 3, P. Redgate.  
Time—12  $\frac{3}{5}$ ths secs.
- 7—100 Yards—Men. (The Sumner Cup).  
1, J. Quarmby; 2, D. Smith; 3, B. A. Woodward.
- 8—High Jump—Men.  
1, L. Jones; 2, J. Quarmby; 3, P. Lambert.  
Height—5ft. 2ins.
- 9—High Jump—Women.  
1, O. Hind; 2, M. Wheelhouse; 3, C. Buckley.  
Height—4ft.  $4\frac{1}{2}$ ins.
- 10—220 Yards—Men. (The Brewill Cup).  
1, J. Quarmby; 2, D. Smith; 3, P. I. Hill.  
Time—25 secs.
- 11—220 Yards—Women.  
1, J. Bradshaw; 2, J. Chapman; 3, J. Richardson.  
Time—30  $\frac{4}{5}$ ths secs.
- 12—Putting the Shot—Men.  
1, P. Bailey; 2, R. Truman; 3, J. Bedford.  
Distance—29ft.  $11\frac{1}{2}$ ins.
- 13—Sack Race—Women.  
1, D. Stevenson.
- 14—Sack Race—Men.  
1, L. Bannister.
- 15—440 Yards—Men. (The Goodwin Cup).  
1, H. M. Warrener; 2, D. Smith; 3, P. I. Hill.  
Time—56  $\frac{1}{5}$ th secs.
- 16—Cricket Ball—Women.  
1, P. Redgate; 2, J. Bradshaw; 3, V. Jackson.  
Distance—47 yds. 2ft. 8in.
- 17—Cricket Ball—Men.  
1, J. Pepper; 2, P. I. Hill; 3, P. Bailey.  
Distance—96 yds. 2ft.
- 18—120 Yards Hurdles—Men. (The Shaw Cup).  
1, J. Quarmby; 2, P. Lambert; 3, P. Grayson.  
Time—18  $\frac{3}{5}$ ths secs.

- 19—80 Yards Hurdles—Women.  
1, O. Hind; 2, C. Buckley; 3, J. Bradshaw.  
Time—14  $\frac{1}{5}$ th secs.
- 20—Throwing the Javelin.  
1, P. Grayson; 2, J. Pepper; 3, P. I. Hill.  
Distance—139ft.
- 21—Hurling the Discus.  
1, F. Duffin; 2, L. Bannister; 3, P. Bailey.  
Distance—112ft. 8in.
- 22—Wheelbarrow Race.  
1, J. Bradshaw & E. Stewart; 2, J. Richardson & J. Chapman.; 3, F. Rollett & P. Burrows.
- 23—Wheelbarrow Race—Men.  
1, B. Smith & E. Lamming; 2, F. Duffin & G. Holmes;  
3, J. Newenham & M. Trendall.
- 24—Staff Race—100 Yards Handicap.  
1, Miss Donaldson; 2, Mr. Blossom.
- 25—One Mile—Men. (The Potter Cup).  
1, P. I. Hill; 2, H. Isaac; 3, H. M. Warrener.  
Time—5 mins. 14 secs.
- 26—Long Jump—Women.  
1, O. Hind; 2, M. Wheelhouse; 3, J. Bradshaw.  
Distance—13ft. 5in.
- 27—Long Jump—Men.  
1, D. Smith; 2, P. Lambert; 3, J. Quarmby.  
Distance—17ft. 5in.
- 28—Inter-County Relay Race—(The Marshall Cup).  
1, Notts. and the North; 2, Lincs. and the East;  
Time—1 min. 59 secs. (College Record).
- 29—Tug-o'-War—Men.  
1, Lincs. and the East; 2, Derby and the West.
- 30—Tug-o'-War—Women.  
1, Agriculture and Horticulture.
- Robinson Trophy—(County Average Award).  
1, Notts. and the North, 3.23; 2, Lincs. and the East  
3.00.
- VICTOR LUDORUM—P. I. Hill, 35 points.
- VICTRIX LUDORUM—O. M. Hind.

F. H. GODLEY, Secretary.



## STUDENTS' ASSOCIATION DIARY.

Winter Term, 1945.

Sept. 24—College reassembled—A female invasion as soon as Bob's back is turned.

„ 25—"When a thing becomes embarrassing it is objectionable"  
Hostel activities start off with a bump.

„ 26—Morning after the night before—who done it? ! !

„ 27—All men see the light and sign the pledge for a quiet life.

„ 29—Whist Drive and Dance—men conspicuous by their absence.

2nd years experiment with "Meltonian."

„ 30—2nd years present their token of gratitude to Dr. Gill.  
"For he *was* a jolly good fellow." "Pairing-on"  
begins—satisfied Geoff.?

Oct. 1—The Doc. Departs.

„ 2—Extraordinary General Meeting—Agenda—Variety to  
be produced in 10 days. Women's night in Billiard  
Room.

„ 4—Demonstration at Dishley. Marian tosses between  
two "Bobs."

„ 5—Billiard Room centre of attraction—Ginger Taylor  
rakes over Fortescue's spade work.

„ 6—Goose Fair and Fresher's Hop at U.C.N.

„ 8—1st Official General Meeting. 2 hours complete  
blackout—true details censored. Ross nearly loses  
his dignity but Lollipop aimed high.

„ 10—U.C.N. President speaks at tea time.

„ 12—Students' night at Variety. Usual guffaws in the  
wrong places.

„ 13—Women play rugger team at Hockey—women still too  
nippy for us—time will tell—see the 12th March.

„ 14—Blondie gets a mystery 'phone call—Effective imper-  
sonations by Percy. Dan squarebashes heavily in an  
endeavour to quell a clique of 2nd years.

„ 15—1st case of piking Those concerned don't mind, but  
Neish apparently did—What's this? Jealousy—  
Elaine.

„ 16—Left Wing formed in opposition to Blood Sports—they  
catch a rat while the remainder caught colds.

„ 17—Dorothy Roberts "wheys" up an American in the Dairy.  
Rugger team goes to Loughborough and wins—  
the toss.

„ 18—Jug Handles needs a train to take the harem to the  
pictures—Jose bears brunt of the attack.

„ 19—Another night of Blood Sports. Neish takes a bath  
with the aid of a few "friends."

„ 20—First main Dance of term—"Joe's Bar" inaugurated.

„ 22—1st Debate. The motion—"Coeducation in schools is  
desirable." D. T. Weston talks on degenerate  
women and Miss Stewart gets up as an example—  
how true!

„ 23—1d. crackers at night in the hostel—Dan blames the  
usual party.

„ 24—Conspirators fined 8/- each.

„ 25—Fine raised to £1 each by the Principal. Table Tennis  
match—Staff lose to Students.

„ 26—Men's Hostel goes to Kegworth Bughouse—Miss  
Stewart relies on safety in numbers.

„ 27—O.K.A. Weekend.

„ 28—Turner, P. J. takes his usual College Hot Bath. "Seems  
to have been a wet weekend"—so say the residents  
of the F. W. Hut. Miss M. Taylor dosed with  
"Enos" for a cracked skull—good old 'Nurse Drip'.

„ 31—Hallow'een Night—spent quietly.

Nov. 3—O.K.A. Weekend again. Rugger team go away to  
play at home—that's organisation for you.

„ 5—Guy Fawkes Night. The Principal allows us a fire—  
N.D.A. (II's) worked for once during practical  
Chemistry. Cynthia goes "Mount-aieering."

„ 7—First try of season for rugger team. The Kingston  
Women hand over traditional Tie to the Lollipop  
on behalf of "Eviton."

„ 9—N.D.A. II's learn from Bobby how to use charcoal in  
case of accidents.

„ 10—Harper Adams visit us and play Rugger, Soccer,  
Hockey, Billiards and Table Tennis. Mid-term  
Dance in Main Hall—Harper's invited.



- „ 12—Auction Sale in Loose-box—Prices fluctuated, bidding generally poor.
- „ 13—A shock administered to Sutton Constabulary by Miss Lawton.
- „ 15—General and Executive Meetings most of the day to form new Cosntitutions. Five of the Faculty Committee resigned.
- „ 16—Constitution passed at the Notts. Executive Meeting.
- „ 19—One clause of Constitution ammended at a General Meeting.
- „ 21—Last mid-week Dance in the Loose-box.
- „ 23—General Hostel Meeting. Cold baths theoretically abolished. Future criminals will saw wood “for the Guy.”
- „ 24—General exodus to Y.F.C. Xmas Party.
- Dec. 3—By-Elections for Faculty Committee. Men's Hostel Choir go Carol singing—proceeds of £1 0s. 1d. sent to Red Cross.
- „ 9—Men's Hostel adopt a “Rise and Shine Early” Scheme. Hence Mount takes Bed and Breakfast at “Eviton”—hospitality returned by Men's Hostel. Tom gets his blood pressure up.
- „ 14—End of term. Hunt Sisters played at the Dance in the evebing to which we welcomed our American guests.
- Easter term, 1946.
- Jan. 15—Students stagger back—Christmas revelry still evident. Official notice-board for once studied with respect.
- „ 16—Faculty Committee have a “straight from the shoulder talk” from the Principal—Kees was eventually allowed a hair dryer!
- „ 19—Lord Belper gives us permission to skate on Kingston Lake.
- „ 20—Miss Russell and company evacuate for the weekend. Joe finds a soft spot on the ice.
- „ 26—First main Dance of term.
- „ 30—Large Hostel v. Combined Hostels at Ladies' Hockey. L.W.H. win 3—1.
- Feb. 2—Hockey success—9 men and 1 woman beat Notts. combined XI—neat work, Mary.

- „ 5—Y.F.C. Public Speaking Competition—Claude's alertness saves Swill but not the Principal's watch.
- „ 6—‘Swat Shucky’ plays for the 2nd XI—“Poof, who's doing this, me or you.”
- „ 9—Bow Day. Nobby works on the Gascoigne principle. Ena offers the Principal some cider. The Principal hoped the nuns were as good as they looked—some hopes!!!
- „ 13—Rugger team visit Watnall, ah happy days, but which way did *you* come in?
- „ 14—Usual fortunates get fined and gated. Students night at the play—Oh, Grandma, where did you get those teeth?
- „ 15—Principal remarked that the cast fitted well into their parts—we hope Lady Mainwaring differs in public life.
- „ 16—Dance for the cast in the Main Hall—Usual trouble maker tries to break up old tradition.
- „ 17—Many students out on “Farm Walks”—learning all manner of things—naughty boy, Percy.
- „ 19—“Stagger Inne” challenged by Small Hostel on netball court.—get ‘battin in.’
- „ 20—General exodus on 5.25 to see “The Wicked Lady”—with same. New version to old saying—“Faith can move mountains” now runs—“Faith can move Hills.”
- „ 21—Away to Harpers in “FNN 663.” Women in minority and armed with hockey sticks. A few sample Shropshire Ale—not much bottle, eh, Newt! Panic on the back seats—“Stop the Bus”—Kees: What again!
- „ 28—Men's 2½ mile road race run. Warrener home first—ah, fish for tea.
- Mar. 2—O.K.A. weekend. 2nd year women for once stay at College for the weekend. Hunt Sisters play for Dance in Main Hall—ooh, you razza!!
- „ 4—Ladies' Mile—Lovely weather for ducks! Miss Richardson wins, but loses her dinner and tea for it.
- „ 7—Derby Horse Show.



- „ 10—Swotitis rapidly spreading. The disease is prevalent in all hostels.
- „ 12—Ladies' Hockey Club play Rugger Club at Hockey. Rugger win 5—1, Joan complains about the rules, and Ena, the number of people losing their dignity. D.A.S. gets plenty of free flogs.
- „ 14—Men's Cross Country Race. Grim as usual like the tea at the end—What a relief to be able to smoke and play skittles again—eh, Ross?
- „ 15—Men's Hockey play Netball against Netball team—Up the skirts, down the trousers. Jerry's Avena fatua takes a shower and his dressing gown. Nice work with the bucket, Horsey.
- „ 16—N.D.A. II's Agric. most entertaining—Some associate full moon with a time for sowing—Gerry agrees.
- „ 20—N.D.A. II's do a spot of Theoretical Feeding for Milch Maiden over tea table. They agree that 1 Milch maiden needs for maintenance Ration:—  
1 part Mangolds (chopped),  
1 part Chickweed,  
1 part Rape Cake,  
Wild Oats ad lib.  
Mineral licks to taste.
- We wonder what they did eat in the Stone Age.
- „ 21—First day of Spring. Women in skittish mood, so they play football—Bang on! Battie Attie.
- „ 22—End of term with all it's usual fond farewells. Summer Term.
- Apl. 8—A fair proportion of students return after Easter recess. Dance in the Loose-box well attended before dusk, after which people left to pick up the threads where they left off.
- „ 24—Earliness of term marked by Jack's absence from N.D.A. II's Engy.
- „ 28—N.D.A. II's learn that a "Manus" is held together by two little dents!! (twins perchance)!
- May 2—Women's night at Cricket—when I was at Rodean!!
- „ 4—First main Dance of term.

- „ 7—Mr. Calder's broadcast relayed in Main Hall before Professor Scott-Watson arrived—"Far too interesting to be called a lecture." Those concerned please note. Miss Cheshire queries the eradication of T.B. but the Professor Implies that she ought to be able to keep it at bay!
- „ 11—Y.F.C. Birthday Party at Kingston.
- „ 14—Large Party have day off for Newark Show.
- „ 17—Last of the Sports heats run off.
- „ 18—Bertie hints to N.D.A. II's male members that it is advisable to 'knock on the door' before entering whether contents be feathered or not. O.S.A. weekend—and a wet one too. Loose-box Dance—no cause for complaints now!!
- „ 22—Sports Day—A fine day for a change. The Sports went well and were keenly contested. North's turn for the laurels.  
We get a Dance in the Main Hall after a riotous supper in which Blondie's tie and Faith's dress share equal honours!
- „ 23—Lollipop is 'snatched like a brand from the burning' and loses her locks! Eviton turns out an experimental hairdressing team to celebrate the occasion.
- „ 26—Mrs. White complains of incivility at tea-time and appeals to her higher authority!
- „ 25—Open Day—cold and wet as expected.  
1st years play 2nd years at cricket—2nd years win. Two women agriculturalists prove that they have benefitted from their Poultry Lectures—What sort where they, Khaki Cambells!!!
- „ 26—Session in Main Hall—Bing, Swing, and Dance music heard—"Would You? or "May I?" and "Please" and "thanks,"—Hm!! this might be back row conversation.

The College Diary ends for the 1945-1946 session with the thought of Bacty, Economics, and a whole lot of saner exams!  
P.I.H.



Midland Agricultural College, Old Students' Association.

OFFICERS, 1946.

Honorary President : THE PRINCIPAL.

President : MR. C. W. ROBERTS.

Vice-President : MR. J. DOYLE.

Treasurer : MR. R. B. SHAW.

Secretary : MISS M. BRINDLEY.\*

Sports Secretary : MISS A. C. NOWILL.\*

Divisional Secretaries :

Derbyshire....	....	....	Mrs. A. N. Richards.
Leicestershire	....	....	Mr. P. Walker.
Lincolnshire	....	....	Mr. M. E. Cox.
Nottinghamshire	....	....	Mr. P. Baddiley.
North	....	....	Mr. C. A. Haspel.
South	....	....	Mr. J. M. Marsden.
Overseas	....	....	Mrs. D. W. Lansdown.

Committee :

The Officers, together with Miss A. E. Cunningham, Miss A.A. Prichard,\* Miss M. E. Marston\*, Messrs. M. H. Greensmith, A. B. Moore, J. F. Shaw, Dr. S. M. Makings\* and *ex-officio*, the Chairman of the Students' Union.

Auditor : DR. S. M. MAKINGS.

Official Outfitters :

Bailey & Simpkin Ltd., 26-27 High Street, Loughborough.

\*Members of the Resident Sub-Committee.

SECRETARIES' REPORT.

The activities of the Association have proceeded very much as usual during the past year ; continuing to be somewhat restricted by the limitations of the present time. Membership figures show a decline from last December when the total membership was slightly over 500 as compared with the present 380. Life membership now totals 264. We would like to remind members that subscriptions become due on 1st January of each year and prompt payment enables members to derive full benefits from the Association in addition to assisting the work of the Secretary and Treasurer. Alternatively, why not become a Life member and eliminate the necessity of remembering to pay Annual Subscriptions ?

The first post-war Annual Reunion held on Friday, 21st December, proved very successful and the response from members was almost overwhelming. The Dinner was attended by 165 people and an additional 55 members attended the Dance. We were very pleased to have with us on this occasion our 1945 President, Mr. Heath, several of our older members and representatives of H.M. Forces. It was a great regret to those of us present that some 50 people had to be refused admission owing to the lack of accommodation. The Committee however, have the question of Reunion facilities under consideration in an endeavour to meet present and possible future demands.

We had hoped to make the presentation of the wallet and cheque to Mr. Roberts at the Reunion, but as he was unavoidably unable to attend they were forwarded to him. A note from Mr. Roberts follows this Report.

As many members will already know, the proposal to change the name of the Association to "Midland Agricultural College Old Students' Association" or, in its abbreviated form "M.A.C.O.S.A." was adopted at the Annual General Meeting last December.

Members are reminded that any matter touching on the activities of the Association may be raised by any member at the Annual General Meeting.

During the past year we have received very little news of the activities of old students and we appeal to all members to let us have such information which is always welcome. We are particularly interested to hear news of those members who are now returning to civilian life and with whom we have lost touch.

It is hoped to arrange a Reunion in December and details will be sent in due course to all members.

The Association records its appreciation of the facilities and hospitality granted by the Principal during the past year.



## SPORTS NEWS.

The results of matches played against student teams are as follows :

Oct. 27—Men's Hockey	....	Won, 3—2.
„ 27—Rugger	....	Won, 15—0.
Nov. 3—Soccer	....	Won, 5—4.
„ —Women's Hockey	....	Lost, 1—3.
Feb. 9—Soccer	....	Won, 6—1.
„ 9—Women's Hockey	....	Lost, 0—5.
Mar. 2—Men's Hockey	....	Lost, 0—3.
„ 2—Rugger	....	Won, 12—6.
„ 2—Billiards	....	Drawn.

Great enthusiasm towards these matches has been shown both by M.A.C.O.S.A. members and students.

The season has been very successful for us although it appears that present women students can teach us quite a lot about Hockey. In the Spring term, however, several members of our team did not appear due to illness and the presence of floods in the neighbourhood; this necessitated finding substitutes at the last minute.

The Men's Hockey team too were unfortunate in their March match as some of our best forwards were prevented from coming. In fact, a couple of hours before the match we had not a single forward in the team but fortunately several students deputed.

In spite of some good soccer from the students, M.A.C.O.S.A. have maintained their superiority again this season.

The Rugger results deserve mention and thanks are due particularly to those "old faithfuls" of 1942-44 R. S. Smith (who always makes himself heard), Cox, Westoby, Carpenter, Greensmith and others who never fail to appear and give stability to the team.

Tennis and Cricket matches are arranged for May 18th.

An effort was made to revive Billiards this year but there was difficulty in obtaining a full team. Any member wishing to play Billiards or any other game next season should notify the Secretary at an early date.

Finally, we would like to thank all those who have so willingly made up M.A.C.O.S.A. teams and also the students for their friendly co-operation and assistance.

MARJORIE BRINDLEY.

ANNE C. NOWILL.

C. W. Roberts writes :—

"I'm glad of the offer of a little space to say 'thank you' to those who planned and those who contributed to the magnificent present which was given to me after the 1945 Reunion. I always considered the work I did well rewarded by the interest I obtained from it and the thanks expressed for it; but, when we are able to turn this gift into something more tangible than a bank balance, it will serve to remind us of the very happy connection we have both had with O.K.A. and the College.

We shall indeed be glad to see any members who care to call at our suburban home in Edgware (EDG 7887)."



# O.S.A. CASH STATEMENT, 1945.

RECEIPTS.		PAYMENTS.	
	£ s. d.		£ s. d.
In hand and Bank, Jan. 1st, 1945	201 17 9	Magazines, 1945	...
Subscriptions:		Re-unions, 1944	...
1944—1	2 6	Re-unions, 1945	...
1945—169	31 19 6	Sports Fixtures	...
1946—24	5 0 6	Postages and Telephone	...
Life—39	122 17 0	Printing and Stationery	...
Re-unions, 1944	7 18 6	Investments	...
Re-unions, 1945	92 2 0	In hand and Bank, Dec. 31st, 1945	...
Gift	16 0		...
	£462 13 9		£462 13 9

# O.S.A. BALANCE SHEET, DECEMBER 31st, 1945.

LIABILITIES.		ASSETS.	
	£ s. d.		£ s. d.
Subscriptions in advance, 1946	5 0 6	Cash in hand and Bank	174 9 7
Literature Service	19 5	Colours on consignment	1 3 1
Life Membership Fund, 253 members	588 17 11	Investments: Cost Price	389 12 0
Balance	147 5 4	Accrued Interest	176 18 6
	£742 3 2		£742 3 2

R. B. SHAW,  
Hon. Treasurer.

S. M. MAKINGS,  
Hon. Auditor.

# O.S.A. PERSONAL NOTES.

**Miss B. M. Alvey** (1935-36) is working in the National Milk Testing Scheme Laboratory at Chesterfield.

**J. F. Anderson** (1943-45) is busy re-opening a Cheese Factory at Gratton, Derbyshire, but in spite of work he is occasionally seen in the vicinity of the College.

Our best wishes to **Miss M. Armitage** (1941-43) on her engagement to Lieut. R. H. Donger, R.N.V.R.

We were very pleased to see **J. C. H. Baker** (1937-39) and **A. C. Tollington** (1938-39) at College when on leave from the C.M.F. last Autumn. After a period as Instructor in Agricultural Courses in Italy, J. C. H. Baker is now demobilised.

**P. Baddiley** (1938-41) has left Notts. W.A.E.C. and he and his wife (**Miss B. Shaw**, 1938-41) are now farming near Bingham, Notts.

Our best wishes to **Miss M. Baddiley** (1938-39) on her marriage to Mr. F. Mellors.

**H. G. Back** (1943-45) and **P. Belton** (1944-45) are employed by Messrs. Boots at their experimental farm at Thurgarton. From the news we receive, it appears that the latter spends most of his time with the guinea pigs.

**Moss V. Barber** (1943-45) and **Miss B. Dumelow** (1943-44) are working together in charge of a Guernsey herd in Berkshire.

With the assistance of **Miss A. M. Balderstone** (1942-44),

**Miss D. K. Beesley** (1942-44) is cultivating her own garden at Rufford, near Ollerton.

**Miss W. Belfield** (1943-45) has joined Oxford W.A.E.C. as a Dairy Instructress and **Miss E. M. P. Bennion** (is similarly employed by Notts. W.A.E.C.

Best wishes to **Miss B. M. Birkett** (1942-44) on her engagement to **M. B. Carpenter** (1942-44), and to **Miss M. M. Baston** (1932-33 34-36) on her marriage to Mr. Ferraro.

**Miss B. Burnett** (1928-29) is Poultry Instructress in charge of the Poultry Department at the Ulster Dairy School, Co. Tyrone.

**A. P. F. Buck** and **P. Weston** (1943-45) are working as Assistant District Officers for Norfolk W.A.E.C.

Congratulations and best wishes to **A. R. Carter** (1943-45) and **Miss A. Burrows** (1942-44) on their marriage last Autumn. They are now living in Cornwall.

We were very pleased to hear that **F. L. Cosham** (1938-39) had recently returned to England after several years as a Prisoner of War in Japanese hands.



**Miss O. B. D. Chapman** (1941-43) has left Lindsey W.A.E.C. for similar Milk Advisory work in Somerset.

**R. A. Chapman** (1942-44) is working in a Cheesemaking Dairy in Yorkshire.

**G. D. Clegg, Miss P. I. Dawson, A. Edwards, E. Stickland and Miss I. Lamb** (1943-45) have joined Derby W.A.E.C.

**K. H. Dearden** (1943-45) is working for Express Dairies, Ltd., at Rowsley in Derbyshire.

**Miss L. M. Dews** (1943-45) is very happy as Horticultural Instructress at the Cheshire School of Agriculture.

**R. Dilworth** (1935-38) has been demobilised recently and returned to M.A.C. as Area Supervisor for Notts. under the National Milk Testing Scheme.

**Miss V. L. Eddy** (1943-45) has joined Hampshire W.A.E.C. as a Dairy Instructress.

Congratulations to **R. J. Fox** (1940-41) and his wife on the birth of a daughter last September.

**Miss K. M. Fisher** (1943-45) is working in the Laboratory at the Midland Counties' Dairy at Birmingham and **Miss J. W. Flint** (1942-45) is in the Laboratory at the Nottingham Co-operative Society Dairy.

**L. S. Gibson** (1940-41) is again in the College neighbourhood working on Mr. F. S. Mee's farm at Shepshed.

**Miss E. Gregory** (1940-41) has left her job at College and is working in the Express Dairy Laboratory at Cricklewood. Also employed by the Express Dairy Co., is **M. H. Hayne** (1943-45).

**Dr. N. T. Gill** (Staff) left the M.A.C. Botany Department last year to join the Staff of Harper Adams Agric. College.

Our deepest sympathy to Mrs. Harvey (**P. M. Polding** 1934-37) on the death of her husband in action in Burma last year.

**Miss B. C. Hemming** (1943-45) is Assistant Area Supervisor in Shropshire under the National Milk Testing Scheme.

Our congratulations to **B. J. Hartley, M.B.E.**, (1925-27) on being appointed Director of Agriculture for the Protectorate of Aden and on the award of the O.B.E. in the 1945 Birthday Honours List.

**Miss M. Hudson** (1942-44) has a job as Milk Sampling Officer in Cambridge.

**Miss B. Hill** (1942-44) is working in the Laboratory at Cadbury's Dairy in Staffordshire.

Congratulations to **J. P. Hudson** (1928?) on being awarded the George Cross and Bar for work in connection with the dismantling of Flying Bombs.

**Miss V. Lloyd-Jones** (1943-45) and **Miss M. Gougham** (1942-45) are working together on a Poultry Farm near Evesham.

**P. D. Kemp** (1942-44) is hoping to return from Nigeria this summer. We were interested to hear that he and **N. Tasker** (1942-44) met shortly after the latter's arrival in Nigeria last summer. Tasker seems to be very happy in his job supervising Butter and Cheesemaking under somewhat difficult and primitive conditions.

We were very pleased to hear from **W. Le Feuvre** (1942-44) who has now returned to Guernsey and is interested to hear news of his College contemporaries.

**N. Lambert** (1943-45) is working on a friend's estate in North Wales but finds "the life rather quiet after College."

Congratulations to Mrs. D. Lewis (**R. V. Soar** 1939-41) on the birth of a daughter early this year.

Heartiest congratulations to **G. W. Lock** (1922-35) on the award of the M.B.E. this year and on his engagement.

**J. M. Marsden** (1935-38) left Wilts. W.A.E.C. last Autumn to become Agricultural Master at Dauntsey's School, near Devizes.

Congratulations and best wishes to **S. M. Makings** (1922-25) who has succeeded Mr. Knox as Head of the M.A.C. Economics Department.

**Miss M. E. Marston** (1942-44) has returned to the M.A.C. as Assistant in Horticulture.

**S. F. Martin** (1933-35) for many years an active Sports Secretary of the Association left the College Dairy last July and is now with the Civilian Military Government in Germany. He seems to be gaining wonderful experience of Commercial Dairying but says that their work is complicated by the acute shortage of fuel, equipment, etc. He visited College during a recent leave and was looking very fit; in fact the increasing girth seems to be causing clothing problems! Also in Germany with Civilian Military Government is **W. S. Bullivant** (1920-22).

**J. C. Matthews** (1934-37) returned to the Staffordshire Farm Institute as Farm Director after being demobilised last winter.

**D. R. Maw** (1934-36) has returned to England after being a Prisoner of War in Japanese hands for five years.

Our good wishes to **A. Moore** (1941-42) on his marriage in July, 1945. He is now working in the Retford district.

We hear that **T. L. A. Morgan** (1942-44) is taking a Veterinary Science Course in London and is doing great things at Rugger.

**Miss A. S. Neale** (1942-45) is working at home and is busy planting thousands of trees. **Miss E. Nuttall** (1939-40) has left Waddesdon and is working in the gardens at Belvoir Castle.

**E. M. Neville** (1943-45) is taking a post graduate course at University College, Nottingham.



Congratulations to **G. F. Palmer** (1943-45) and his wife (**M. Wright** 1942-44) on the birth of a daughter, Susan Margaret in February. We also hear that they are starting to build up a Guernsey herd.

**Miss C. M. Parry** (1943-45) is working in Derby Parks.

Congratulations to **J. R. Pope** (1940-42) on his engagement. He is demobilised and working on a farm near Retford.

**F. W. Porter** (1937-39) returned home last year after five years as a Prisoner of War in Germany. He is now engaged on Clean Milk production in the Chesterfield district.

**Miss M. Pilkington** (1942-43) and **Miss B. Allen** (1942-43) are working together on a Poultry Farm near Norwich.

Congratulations and good wishes to **P. S. Raby** (1944-45) and **Miss M. K. Colledge** (1943-45) on their engagement in April. Miss Colledge is working at an Express Dairy Laboratory at Faringdon, Berks.

**Miss J. E. Ray** (1942-44) and **Miss N. Greaves** (1942-44) are working at the Experimental Poultry Farm at Newbury. Best wishes to Miss Greaves on her engagement.

Congratulations to **C. W. Roberts** (1919-23) and his wife (**E. M. Peacock**, 1920) on the birth of a daughter, Cynthia Mary on the 26th February.

**S. E. S. Robinson** (1942-44) has left Derby W.A.E.C. for the Lindsey (Lincs.) W.A.E.C.

**Miss M. S. Robey** (1939-40) has had to give up her Poultry career for health reasons and is now a school clerk at Tipton, Derbyshire.

**Miss J. Robinson** (1944-45) is doing practical Horticulture at East Malling.

**J. H. B. Rollett** (1933-34) is now demobilised and has returned to B.O.C.M.

**J. E. Russell** (1939-42) and his wife (**J. M. Bloor** 1940-42) have left Morley and are now farming at Ingelbey in Derbyshire.

**Miss E. Salsbury** (1942-34) is working at Messrs. Barrons Nurseries at Borrowash with a view to landscape gardening.

**R. Scott** (1929-31) has left commercial Dairying and is now Lecturer in Dairying at the College.

It was with deep regret that we heard of the death of **W. S. Searbey** (1938-39) after a flying accident last April.

Our best wishes to **Miss P. Severn** (1930-32) on her engagement to **J. Doyle** (1930-33). Miss Severn has to work in the M.A.C. Economics Department while on the unenviable job of house-hunting. Doyle is working in the Bakewell district.

**Miss K. E. Sharpe** (1942-44) is supervising School gardens in Lincs.

**Miss B. Sharples** (1943-44) has a milk sampling post in the Lincoln district. Nice work!

**J. L. S. Shucksmith** (1940-42) is moving to Lincs. to replace **N. Taylor** (1940-42) as Animal Husbandry Officer. Congratulations to him and **Miss E. Russell** (1940-42) on their engagement last June.

Congratulations to **R. J. Seater**, Lieut., R.N.V.R. on being awarded the D.S.C. As far as we know this is the first award made to any old student in the Navy.

**N. F. Sampson** (1943-45) is working for Herts. W.A.E.C.

**G. Smedley** (1943-45) is serving in the Royal Navy.

**Miss K. Smith** (1942-43) is busy in the Nurseries at her home at Ulceley, Lincs.

Congratulations to **R. S. Smith** (1942-44) and **Miss M. E. Green** (1942-44) on their engagement. They have obtained a farm in Northants. and are to be married in the late summer. In the meantime Miss Green is working at the Moulton Farm Institute.

**J. D. M. Stafford** (1931-42) has recently returned home after service with the S.E.A.C.

Congratulations to **O. G. W. Stafford** (1936-38) and his wife on the birth of a daughter last year.

Our best wishes to **Miss B. M. Tarver** (Staff) on her engagement to Mr. L. Lakin of Ontario.

Congratulations to **C. B. Thompson** (1936-38) and his wife **M. Haslam** (1936-38) on the birth of a daughter, last June.

**H. P. Taylor** (1943-45) is doing a practical Horticultural job with Wheatcrofts.

**Miss A. E. Underwood** (1943-45) is a practical Assistant in the Botanic Gardens at University College, Nottingham.

Congratulations to **A. C. Wagstaffe** (1942-43) on his marriage last November.

**Miss N. E. Walmsley** (1943-44) is at home.

**Miss J. Walsh** (1938-39) seems very happy in her job at Oaklands Institute, Herts.

**G. R. Watkins** (1943-45) is with Derby W.A.E.C. and among other jobs is carrying out calf feeding trials.

**Miss D. Wood** (1938-40) has left Grimsby Co-op. Dairy and is now an Area Supervisor under the National Milk Testing Scheme.

Congratulations to **J. H. Woodford** (1944-45) and **Miss H. Bradley** (1943-45) on their marriage on April 30th.



Further news of old students inadvertently omitted is appended :—

**W. J. Brown** (1942-44) is working for a firm of landscape gardeners at Gravetye, Exsse.

**S. R. Chaffey** (1942-44) is Assistant Technical Horticultural Officer in the E. Riding of Yorks.

**W. C. Collin** (1943-45) is working at a Nursery at Notcotes, in Suffolk.

**Miss B. Davis** (1943-44) is working on a farm at Barrow-on-Trent. Derbyshire.

**A. Dunnett** (1942/44) is managing a fruit farm at Colchester, Essex.

**Miss P. F. Ferreira** (1941-43) is shortly moving to the East Riding to become Assistant Advisory Officer in Horticulture.

**W. J. Gregory** (1943-45) is doing glasshouse work in Swanley, Kent.

**Miss M. Garrard** (1941-43) is working at a Nursery in Derbyshire.

**G. W. Webster** (1927-28) has moved to Apethorpe, Northants, to take charge of the large milking herd of Mr. J. W. Tomkins.

**D. R. Mumford** (1943-45) is Assistant Technical Officer for Northants. W.A.E.C. and works from Moulton Farm Institute.

Congratulations to **G. E. Baines** (1942-44) on his recent marriage.

**D. Carpenter** (1936?) has moved to Worcs. W.A.E.C.

**J. D. Burton** (1937-39) has returned to College to complete his course.

**J. C. H. Baker** (1937-1939) writes :—

"In October, 1945, 6th British Armoured Division, started a Farm Training School in Italy, for the Education of men interested in farming and market gardening, and shortly to be released from the Army.

I was appointed Senior Instructor at the commencement, and during the period I was there over 100 students had passed through on six weeks courses.

Though Italian methods of farming were in many respects vastly different from our own, many farms, market gardens, dairies, etc., were inspected as a basic part of each course. In this capacity I visited two dairies with parties of students, and it is of these visits I wish to write now.

The first dairy belonged to a well known Italian Company, who were before the war represented in most European countries.

Equipped to handle about 15,000 gallons of milk from local farmers at the peak period of the year, it had two interesting points. The first was its completeness, and the second its dirtiness. By its completeness I mean that it had a little department for everything, cheese making, butter making, dried milk, condensed milk, and even a whey extraction plant. All were of course on a small scale, but the manager was very proud of having everything, even though the majority of the plant had not been used for the last seven years.

During my visits they were cheese making, the hard "Asiago" type, which the Italians mature for a very considerable time and then use grated over their spahgetti.

The dirtiness of the place was noticeable even as we walked on to the receiving platform. Churns were arriving from farms, and some which had badly fitting lids, were made more milk-tight by packing a little straw or hay round the inside. And no churn-washer—just a rinse round with water. Most of the equipment was also very dirty. I asked if they had a laboratory. "Of course," the manager replied. A dilapidated centrifuge and four gerber tubes in the corner of the dairy was the answer to that query. To cap the whole thing, the whey produced was used for pig-feeding and some 500 pigs were housed in a most unhygienic building, approximately 20 yards from the main part of the dairy. The weather was warm then, a hot summer was coming, I will say nor more.

The other dairy was a different proposition. Clean, hygienic, and well laid out. It dealt with approximately 3,000 gallons daily, pasteurising, cooling and bottling for the inhabitants of the town on whose outskirts it was situated. A modern building, under the control of the Province, all floors were red tiled, and all walls and ceilings white tiled. The equipment was modern with the exception of the coolers which were large editions of the normal farm gravity flow type with a brine section. Milk was pumped to the top floor, where it was 'flash' pasteurised and then held at 145—150 degrees F. for 30 minutes. then cooled and held in glass-lined tanks until bottled. At the time of my visit milk was being sold from the can, as glass-ware was impossible to procure. Churns were washed on a rotary washer and all equipment and rooms were spotlessly clean.

I also visited many farms, many of them making farmhouse cheese in their own small dairies, and less said about them the better.



I did not see a milking machine during my visit, and was given to understand that this was consistent with the labour question and the absence of any cleanliness control. Varying according to the Province a farmer is compelled to employ a certain amount of labour so there is never any shortage. In the Province I knew best it averaged out at one man and one woman per ten acres of land. On one large farm I saw a small boy milking and was told he was eleven and had been employed there as a milker since he was eight. And here they commenced milking at three a.m. in the morning.

One other point continually arose, the great use of copper receptacles for milk. They told me they had no trouble from them, if milk was not stored for long periods in them. Their extensive use for cheese making vats, etc., was always a continual source of amazement to me.

In conclusion, I would say that I could tell much more about the farms and dairying farming methods, but this would be another story, which perhaps may follow in future."

J.C.H.B.

## LIST OF MEMBERS, MAY, 1946.

*\*Denotes Life Member.*

Abbott, Miss J. C. ....	2, Loscoe Mount Road, Sherwood, Nottingham.
Adams, D. ....	Prestwood Farm, Kedleston, Derby.
*Addison, D. E. ....	Riby Grange, Grimsby.
*Adlem, Mrs. B. ....	2 Laburnham Villas, Wincanton, Somerset.
Alden, Miss W. B. ....	Bumbey Cottage, Knap Hill, Nr. Woking.
Allen, D. S. ....	Glebe Farm, Gamston, Near Retford.
*Allison, W. ....	West Leake, Loughborough.
*Alston, J. D. ....	Uphall, East Harling, Norwich.
*Archer, R. E. ....	Royal Oak Garage, Barlborough, Chesterfield.
Armitage, Miss M. ....	Thetford House Farm, Baston, Peterborough.
*Asher, A. ....	Millfield Farm, Heckington, Sleaford.
Bacon, G. ....	The Grange, Fullwood, Sutton-in-Ashfield.
*Bailey, G. D. ....	Shangri-La, Nanpanton Road, Loughborough.
*Baines, G. R. ....	Home Farm, Alexton, Uppingham.
*Baines, G. E. ....	Leadenham, Lincoln.
Baird, Miss E. ....	The Barn House, Castle Donington.
Baker, J. C. H. ....	Elvedon, Uttoxeter, Staffs.
*Banner, J. W. ....	36 Dorchester Road, Western Park, Leicester.
*Barber, Miss G. ....	Finches Farm, near Stevenage, Herts.
*Barber, K. ....	Broom Farm, Carlton-in-Lindrick, Worksop.
*Barber, Miss V. ....	Oak Ash Farm, Chaddleshworth, near Newbury.
*Barton, T. H. ....	Sunnyside Farm, Chilwell, Notts.
*Bath, F. H. ....	New Swannington, near Whitwick, Leics.
*Beacroft, R. H. ....	The Mount, Preston, Miverton, Somerset.
*Beard, W. D. ....	Nettleworth Manor, Mansfield Woodhouse.
Beeby, Miss B. K. ....	The Orchards, Barley Road, Syston.
*Beech, Miss M. J. ....	60 Albert Road, Tamworth, Staffs.
*Beever, H. H. ....	Gateford Farm, Worksop.
*Bell, D. ....	Glen Lyn, Milford Hill, Salisbury.
*Bell, Miss E. Ferguson	Ivy House, Mickleover, Derby.
*Benson, J. P. ....	Agricultural Department, Embo, Kenya.
*Bethell, Mrs. B. M. ....	Riverdale, Mytham Bridge, Bamford.
*Bishop, G. R. H. ....	Hall Farm, Ullesthorpe, Rugby.
*Birchenough, G. ....	Ingledene, Rainhall, Barnoldswick, Colne.
*Bishop, K. C. ....	South Farm, Harthill, Sheffield.
Blackshaw, Miss M. ....	Carr House Farm, Edale Road, Hope.
*Blackwall, J. ....	Kirk Ireton, Derby.
*Blagg, Miss Z. ....	Woodnook Farm, Whitwell, Worksop.
*Bland, Miss L. H. ....	Smithfield Road, Shrewsbury.
*Blank, S. de ....	The Old House, Swallowfield, Berks.
Blore, Miss B. A. ....	Cream Gorse, Melton Mowbray.
Bloxham, Miss S. M. ....	Sunnydale, Matlock Road, Ambergate.
*Boddy, F. A. ....	1 Weaste Lane, Buile Hill Park, Salford, 6.
*Bond, Mrs. R. F. ....	Little Fulford, Kingston St. Mary, Taunton.
*Brett, Mrs. P. ....	Ashtree Farm, Ludborough, nr. Thoresby, Lincs.
*Brewitt, J. R. ....	Stanmore, Nottingham Road, Natal.
*Brieant, Mrs. E. M. ....	Allots Moss Cottage, Oakmere, Northwich.
*Brindley, Miss M. ....	Midland Agricultural College.
*Briggs, S. R. ....	Cordwell Valley, Holmesfield, nr. Sheffield.
*Briggs, Mrs. L. M. ....	Otters Farm, Stokeham, Retford.
Brocklesby, Miss D. ....	College Farm, Lissington, Lincoln.
*Brown, R. H. ....	College Farm, Luddington, Scunthorpe.
*Brown, A. G. ....	Fern Villa, Epworth, Doncaster.
Brown, W. J. ....	Caxton Cottage, Ticehurst, Tunbridge Wells.
*Browne R. H. ....	Muckleton, Burnham Market, King's Lynn.
*Bruff, Miss V. P. ....	Harfield Lodge, Nyn Park, Northaw, Herts.







\*Hirst, H. O. .... Gilling House, County Mental Hospital, Mickleover, (Derby).  
 \*Hoare, Miss R. A. .... Barrows Hill Farm, Jacksdale, Notts.  
 \*Holden, Dr. H. S. .... Forensic Laboratories, Nottingham.  
 \*Holden, M. I. .... *Address unknown.*  
 \*Hopkins, Mrs. G. M. .... Laeberbia, Leicester Rd., Groby, Leices.  
 \*Horton, Miss B. .... Sunnyside, Flaxholme, Duffield, Derby.  
 \*Houghton, G. H. .... The Grove, Ashfordby, Melton Mowbray.  
 \*Humphrey, Miss J. .... Meadowside, Leverington Common, nr. Wisbech, (Cambs).  
 \*Hunt, Miss M. A. .... 184 Kensington Rd., Reading.  
 \*Hurst, F. H. .... South View, East Markham, Newark.  
 \*Hurst, J. C. .... College Farm, East Markham, Newark.  
 \*Hurst, Mrs. S. S. .... Park Farm, Blyth, Worksop.  
 Idiens, Miss J. .... Hayles Farm, Winchcombe, Glos.  
 \*Jackson, Miss R. .... Newnham House, North Parade, Grantham.  
 \*Jackson, S. G. .... Saltscar, Newcomen Terrace, Redcar.  
 \*Jacques, A. L. .... 8 Hathern Road, Shepshed, Loughborough.  
 \*James, Mrs. W. M. .... Roxby, New Road, Fendown, Wimborne, Dorset.  
 \*Jaques, Miss I. .... Danum, Birch Avenue, Sleights.  
 \*Jeffery, R. A. .... Sunray, Boma Road, Trentham, Stoke-on-Trent.  
 \*Johnson, Mrs. R. M. .... Colliers Arms, Clows Tor Rock, nr. Bewdley, Worcs.  
 Jones, Miss V. M. Lloyd, High Lea, Tansley Hill Road, Dudley.  
 Kell, C. A. .... 29 Welholme Road, Grimsby.  
 Kelsey, Miss F. .... 37 Knivesmith Gate Chambers, Chesterfield.  
 Kelsey, Miss E. .... 26 Bridegate, Retford, Notts.  
 Kemp, P. D. .... 29 Milner Street, Newark, Notts.  
 Ketteringham, J. E. .... Harrowby Hall, Grantham.  
 \*Kennedy, F. .... 12 The Larches, Teeswill, South Bank, Middlesboro.  
 Kibble, R. K. .... Hall Farm, Wigston, Parva, nr. Hinckley.  
 Kilpatrick, Miss D. F. .... Goland Brae, Yewland, Chesterfield.  
 \*Kimble, O. D. .... Agriculture Institute, Seale Hayne, Newton Abbot, (Devon).  
 \*Knowles, J. K. .... Moor Farm, Morley, Derby.  
 \*Laing, J. A. .... Manor Farm, Newton-by-Castleacre, King's Lynn.  
 Lamb, Miss I. .... 46 St. George's Square, Chadderton, Lancs.  
 Lambert, N. .... Pennant Hall, Eglwysbach, Talycarfn, Denbigh.  
 \*Lake, Mrs. .... 17 Woollaton Hall Drive, Woollaton, Nottingham.  
 \*Lansdown, D. W. .... Hatford House, Faringdon, Berks.  
 Lansdown, Mrs. D. W. .... Pool House, Ashby Folville, nr. Melton Mowbray.  
 \*Ledger, Mrs. W. W. .... Sisal Exp. Station, Ngomeni, Tanga, T.T.  
 \*Lock, Mr. G. W. .... Willaston Hall, Nantwich, Cheshire.  
 Lomax, Mrs. E. B. .... Helmeth, Church Stretton, Salop.  
 \*Lomax, Miss K. L. .... The Beeches, Huthwaite, Notts.  
 \*Lowe, Miss E. A. .... Town Farm, Donington, Spalding, Lincs.  
 Lumby, J. ....  
 \*Makings, Dr. S. M. .... Midland Agricultural College.  
 \*Mantle, D. W. S. .... Yew Tree House, Langham, Oakham.  
 \*Mantle, R. G. .... *Address unknown.*  
 \*Mardsen, J. M. .... Dauntsey's School, West Lavington, nr. Devises.  
 \*Marsh, Miss P. A. .... c/o Cherry Tree Hospital, Hemel Hempstead.  
 \*Marston, Miss M. E. .... 34 Cromwell Road, Beeston, Nottingham.  
 \*Martin, J. M. .... Kirklands, Kirkoswald, Maybole, Ayr.  
 \*Martin, S. F. .... Hungary Lane, Sutton Bonington.  
 \*Maw, D. R. .... Harbarden, Wharfe Road, Crowle, Lincs.  
 Mettham, J. M. .... The Cottage, Barrowby Road, Grantham.  
 Meyrick Jones, Miss D. .... Willows Farm, Station Audley, Bicester.  
 \*Middleton, Canon S. H. .... St. Pauls' Residential School Blood Reserve, Cardston, Alberta, Canada.  
 \*Milburn, R. B. .... 6 Woodlands Avenue, Wolstanton, Stoke-on-Trent.  
 Milner, G. H. .... Silverlands Farm, Fishpool, Mansfield.

Mitchell, Miss E. M. .... Ivy Cottage, Rowsley, Derbys.  
 \*Moore, A. B. .... Manor Farm, Ab Kettleby, Melton Mowbray.  
 \*Morgan, T. A. L. .... Pennice Home Farm, Reynoldstown, Swansea.  
 Mundy, Mrs. .... 58 Mount Road, Pern, Wolverhampton.  
 \*Mumford, D. R. .... 35 Holmfield Road, Stoneygate, Leicester.  
 \*McArthur, Miss F. I. .... 9 Ricksford Hill, Aylesbury, Bucks.  
 McDermott, Mrs. N. ....  
 McMinn, Miss C. C. .... *Address unknown.*  
 \*Nield Miss S.D. .... The Knob, Aston-on-Trent, Ashbourne.  
 \*Norman, Miss D. M. .... Belhaven Hospital, Dunbar, East Lothian.  
 \*Nourish, W. H. .... 16 Apers Avenue, Woking, Surrey.  
 \*Nuttall, Miss A. C. .... Midland Agricultural College.  
 Nuttall, Miss E. .... The Bothy, Belvoir Castle, Grantham.  
 \*Oliver, J. P. .... 47 South Street, Ilkeston.  
 \*Osborne, A. T. .... Merrie-fields, Nethermoor, Wingerworth, Chesterfield.  
 \*Osbourne, F. .... 37 Dalston Lane, Dalston, London, N.I.  
 \*Owen, Miss M. H. .... Central Council for Health Education, 2 Saville  
 Palmer, G. F. .... Thoroton, Aslockton, Notts. (Place, Newcastle).  
 Palmer, Mrs. G. F. .... Thoroton, Aslockton, Notts.  
 \*Parker, P. F. .... Kinoulton Grange, Hickling, Melton Mowbray.  
 \*Parker J. F., .... *Address unknown.*  
 \*Parsonage, J. .... Oakcroft, Malpas, Cheshire.  
 \*Peacock, Miss D. M. .... Herts. Institute of Agric., Oaklands, Herts.  
 \*Pickworth, H. B. .... Pickering Grange, Ellistown, Leicester.  
 Plaskitt, H. S. .... Fulstow Mill, Louth, Lincs.  
 \*Plumb, E. J. .... 40 Elvedon Road, Thetford, Norfolk.  
 Porter, F. W. .... Anchor Inn, Oakenthorpe, Derby.  
 Porter, J. G. .... Tattershall Bridge Farm, Tattershall, Lincoln.  
 \*Prichard, Miss A. A. .... Midland Agricultural College.  
 \*Prince, Mr. D. .... Sapperton Manor, Church Broughton, Derbys.  
 \*Prince, Miss G. .... Institute of Agriculture, Usk, Monmouth.  
 \*Quick, Mr. A. J. .... 46 Ampthill Road, Bedford.  
 \*Ralph-Smith, Mrs. S.T. .... Woodleigh, Bunny Lane, Keyworth, Notts.  
 Ramsbottom, A. T. S. .... 442 Milton Road, Cambridge.  
 \*Rash, C. D. .... Felmingham Hall, N. Walsham, Norfolk.  
 \*Raynes, F., O.B.E. .... Norfolk Agric. Station, Sprowton, Norfolk.  
 \*Read, Miss J. .... Somersal Herbert, Doveridge, Derbys.  
 \*Read, Miss J. H. .... Pinfold, Poulton le Fylde, Lancs.  
 \*Revill, Mr. A. E. .... Warp Farm, Blyton Carr, Gainsborough.  
 Richards, Mrs. A. N. .... West Bank, Ambergate, Derby.  
 \*Riley, W. D. .... W.A.E.C. Office, 48 Compton, Ashbourne.  
 \*Roberts, C. W. .... 98 Wolner Gardens, Edgware, Middlesex.  
 \*Roberts, Mrs. C. W. .... 98 Wolner Gardens, Edgware, Middlesex.  
 Robey, Miss M. S. .... Wingate, Thanet Street, Clay Cross, Chesterfield.  
 \*Robinson, Prof. H. G. .... Midland Agricultural College.  
 Rogers, Miss B. R. .... Tristan, Houghton on the Hill, Leicester.  
 Rollett, J. H. B. .... 6 Forest Road, Loughborough.  
 Roper, Miss N. .... Midland Agricultural College.  
 \*Rowland, J. W. .... 157 Kedleston Road, Derby.  
 \*Russell, G. H. .... at 77 Wilderness Road, Earley, Reading.  
 \*Sargent, J. B. .... Lodge Farm, Barnham, Barton on Humber.  
 Saville, J. C. .... 3 Oakfield Avenue, Brampton, Chesterfield.  
 Scott, R. N. .... c/o Lloyds, Bombay, India.  
 \*Scott, R. .... Midland Agricultural College.  
 \*Scrivener, F. L. C. .... Training College, Cumberland Street, Dunedin, N.Z.  
 \*Selby, Mrs. E. H. .... Farnborough Lodge, Locks' Bottom, Farnborough.  
 \*Severn, Miss P. .... Midland Agricultural College.  
 Sharpe, Miss K. M. .... West Street, Somerton, Somerset.



\*Shaw, J. F. .... The Manse, Market Weighton, Yorks.  
 \*Shaw, R. B. .... Midland Agricultural College.  
 \*Sheppard, Kiss A. .... 4 Christchurch Gardens, Reading.  
 \*Siddall, F. .... Main Street, Sutton Bonington, Loughborough.  
 \*Simpson, G. .... East Flotmanby, Filey, Yorks.  
 \*Simpson, T. E. A. .... Collow Abbey Farm, nr. Wragby, Lincs.  
 \*Simpson, M. M. .... Kerrip, Felstead, Essex.  
 \*Singh Datar, S. B. .... Arnadale Cottage, Simla, E. India.  
 \*Singleton, A. E. .... Grange Farm, Oxtun, Newark, Notts.  
 \*Slaney, H. J. .... Estate Office, Langham, Oakham.  
 \*Slater, R. J. .... Orchard Lea, Bourne Hill, Whernstead, Ipswich.  
 \*Smith, H. S. .... c/o Director of Vet. Service, Murapwa, Tanganyika.  
 \*Smith, Miss K. .... The Ferneries, Ulceby, Lincs.  
 \*Smith, R. S. .... The Hollies, Church Langton, Market Harborough.  
 \*Smith, Miss S. M. L. .... The Area Laboratory, The Square, Warwick.  
 \*Solomon, J. .... 107 Doncaster Road, Scunthorpe.  
 \*Sommerfelt, W. .... Chontong T.E., Marybong P.O., via Ghoon D. H. Rly., N. Bengal.  
 \*Southwood, J. G. .... Hall Farm, Little Dalby, Melton Mowbray.  
 \*Sowerby, F. J. .... Northants Farm Institute, Moulton, Northants.  
 \*Spurr, G. E. .... *Address unknown.*  
 \*Stanger, C. A. .... Five Oaks Farm, Stanford on Soar, Loughborough.  
 \*Staniland, Miss D. M. .... Mill Farm, Ordsall, Retford, Notts.  
 \*Staniland, E. A. .... Mill Farm, Ordsall, Retford, Notts.  
 \*Sterland, Mrs. G. M. .... Amberside, Pentrich, Derby.  
 \*Sterland, T. .... Sharrington Hall, Melton Constable Norfolk.  
 \*Stevens, A. H. .... *Address unknown.*  
 \*Stevenson, C. .... Brooklyn House, Carrington Street, Loughborough.  
 \*Stovin, N. M. .... Abbey Grange, Alford, Lincs.  
 \*Strawson, G. .... Low Brecks Farm, East Markham, Newark.  
 \*Strawson, H. M. .... The Old Vicarage, Marnham, Newark.  
 \*Stretton, F. .... The Shire Hall, Bedford.  
 \*Stringfellow, F. .... 4 Heath Avenue, Mansfield.  
 \*Stroude, H. K. .... Home Farm, Longstanton, Cambs.  
 \*Sturgess, Miss S. .... Midland Agricultural College.  
 \*Sturgess, C. R. H. .... Dudley Houes, Thurnby, Leicester.  
 \*Summers, M. H. .... 3 The Grove, Coates, Barnoldswick, via Colne, Lancs.  
 \*Sutton, Mrs. W. D. .... *Address unknown.*  
 \*Sykes, Miss J. .... Longfield House, Trowbridge, Wilts.  
 \*Tasker, N. E. .... 28 Agusta Street, Grimsby, Lincs.  
 \*Taylor, A. .... Agricultural Dept., Moshi, Tanganyika Territory.  
 \*Taylor, A. S. .... Bulb Gardens & Farm, Tresco, Isle of Scilly, (Cornwall).  
 \*Fordshaw-Taylor, Miss M. .... 140 Dalston Rd., Carlisle, (Cornwall).  
 \*Thomas, Miss D. M. .... *Address unknown.*  
 \*Thompson, R. W. .... Water Farm, Rushington, Sleaford, Lincs.  
 \*Thurlow, Mrs. J. G. .... Atherstone, Bindura, Rhodesia, B.S.A.  
 \*Townend, L. .... c/o J. M. Mardsen, Dauntsey's School, West Lavington, Devizes, Wilts.  
 \*Treble, A. R. .... Danes Road, Awebridge, Romsey, Hants.  
 \*Trezise, Mrs. K. .... Innesfree, Meneage Road, Helston, Cornwall.  
 \*Tuffrey, Miss H. .... 31 Main Street, Shirebrook, Mansfield, Notts.  
 \*Turner, G. .... Bassett Farm, Upper Langwith, nr. Mansfield.  
 \*Tyler, P. W. S. .... Brevik House, Southrepps, Norwich.  
 Underwood, Miss A. E. .... c/o Mrs. Braithwaite, 86 Plains Road, Mapperley, (Notts).  
 \*Usher, Mrs. E. W. .... 48 Monksmoor Road, Shrewsbury. (Notts).  
 Wagstaff, A. C. .... Spellio Farm, Hindlip, Worcester.  
 \*Wallbank, A. .... Columbine Farm, Dale Abbey, Ilkeston.  
 \*Wale, Mrs. A. H. .... Brockhurst, Monks Kirby, Rugby.

\*Walker, Mr. P. .... Leics. W.A.E.C., Bank Chambers, Market Place, Loughbgrough.  
 Walsh, Miss J. .... 18 Oakwood Drive, St. Albans, Herts.  
 Wassell, H. R. .... Dewbrooke, Hora, E. Sussex.  
 \*Waud, L. M. .... Star House Farm, Taddington, Buxton, Derbys.  
 \*Webster, G. W. .... The Terrace, Apethorpe, Peterborough, Northants.  
 Weller, R. O. .... Trelaske House, Looe, Cornwall.  
 \*Wells, J. E. .... Demeter, Wraxall, Bristol.  
 Wernham, Miss M. .... King William 4th, Thurcaston, Leics.  
 Westoby, D. .... 112 Wrottesby Road, Teetenhall, Staffs.  
 Westoby, Mrs. D. .... 112 Wrottesly Road, Tettenhall, Staffs.  
 Weston, P. C. .... 8 College Road, Norwich.  
 Weston, R. A. .... Sherwood, 9 Oakmere Close, Potters Bar, Mddx.  
 \*Wharmby, Mrs. R. .... *Address unknown.*  
 Wheatley, J. C. .... Cliftonthorpe, Ashby-del-la-Zouch, Leics.  
 \*Whetton, D. .... Hylands Hotel, Warwick Road, Coventry.  
 \*White, A. .... 203 Green Lanes, Wylde Green, SuttonColdfield, (Warwickshire).  
 \*White, W. .... Hanby Grange, Grantham.  
 \*Whitworth, J. W. .... 10 Pakenham Road, Edgbaston Roah, Birmingham.  
 \*Wigley, Miss A. E. D. .... Lodge Farm, New Houghton, Mansfield, Notts.  
 \*Wilkinson, G. W. .... Saxonbury, Rake Lane, Eccleston, nr. Chester.  
 \*Wilkinson, J. R. .... 264 Walton Breck Road, Liverpool, 3.  
 \*Willey, Miss B. .... 252 Frodingham Road, Crosby, Scunthorpe.  
 \*Williams, Miss J. .... Brock Hill Farm, Hose, Melton Mowbray.  
 \*Winot, Miss J. A. .... White House Farm, Newton on Trent, Lincs.  
 \*Wilson, Miss M. .... Munton House, Kents Bank Road, Grange-over-Sand  
 \*Wittering, S. C. .... 22 Douglas Road, Long Eaton, Nottingham.  
 \*Wood, Miss D. .... 21 Park View, Cleethorpes, Lincs.  
 \*Wood, R. O. .... Midland Agricultural College.  
 \*Wood, Miss H. S. .... Grove Farm, Epperstone, Notts.  
 \*Wood, S. .... Tibbutts Farm, Normanton-on-Soar, Loughborough  
 \*Woodall, W. .... Crich, Midford Road, Combe Down, Bath.  
 \*Wright, C. K. .... Belvoir Castle Farm, Woolsthorpe, Grantham.  
 \*Young, C. S. .... South Owersby House, South Owersby, Lincs.



## STUDENTS, 1945-1946 SESSION.

Name.	Address.	Course.
Albone, Edward	.... 'The Elms,' Spridlington, Lincoln	C.D.A.1.
Alenson, Ruth	.... 12 Harrow Gardens, Wollaton Park, Nottingham.	C.D.H.1.
Anderson, Robert	.... "Gorse Bank," Old Newarke Road, Mansfield, Notts.	Deg.Agri.3
Ash, Phyllis Irene	.... 1 Windsor Rd., Newark, Notts.	C.D.D.1.
Bailey, Philip Hubert	.... Rookery Farm, Lakenhearh, Brandon, Suffolk.	C.D.A.1.
Marshall	.... 6 Lichfield Avenue, Mansfield, Notts.	C.D.H.2.
Ball, Jean Mavis	.... Whitton Farm, Oulton Broad, Lowestoft, E. Suffolk.	C.D.A.1.
Bannister, Lawrence	.... "Strangford," 37 Chaddesden Lane, Chaddesden, nr. Derby.	C.D.D.1.
Henry	.... "Sunwell," West Furlong, Retford, Notts.	C.D.A.1.
Barlow, Frances Elaine	.... Evesham House, Kegworth, near Derby.	C.D.H.2.
Barsby, Geoffrey John	.... West Street, Scotter, Gainsborough Lincs.	C.D.A.2.
Basford, John Sutton	.... 32 Griffith Street, Rushden, Northants.	Deg.Agri.2.
Bayes, James Frank	.... The White House, North Scarle, Lincoln.	C.D.A.1.
Beal, Ruth Mary	.... Kirby Laythorpe, Sleaford, Lincs.	C.D.A.1.
Bedford, Joseph James	.... "Avery House," Wygate Road, Spalding, Lincs.	C.D.D.2.
Beever, James Stuart	.... 39 Danford Lane, Solihull, Warwicks.	C.D.D.1.
Bellamy, Norah Joan	.... "Elmhurst," Huntingdon Road, Cambridge.	C.D.H.1.
Best, Joan Hope	.... Glebe Farm, Main Street, Thringstone.	C.D.A.1.
Biggs, Michael George	.... Cromwell House, Battlesbridge, Essex.	C.D.A.1.
Billing, John Raymond	.... Westland Villa, Goxhill, Barrow-on-Humber, Lincs.	Deg.Horti.3.
Blanks, Ryder James	.... 28 Cousin Lane, Ovenden, Halifax, Yorks.	C.D.H.1.
van den Bos, Cornelius John	.... 50 Burns Lane, Warsop, Mansfield, Notts.	C.D.A.2.
Bowman, Graham	.... Atterby Brickyard, Snitterby, Gainsborough, Lincs.	C.D.A.2.
Bowman, Helen Mary	.... "Merrivale," Sheepwalk Lane, Fishpool, nr. Mansfield, Notts.	C.D.P.1.
Bradshaw, Joan	.... 179 Nottingham Road, Mansfield, Notts.	C.D.P.2.
Brammer, Sheila	.... 121 Pasture Road, Stapleford, Nottingham.	C.D.A.1.
Brown, Elinor	.... 120 Cliffe Hill, Warwick	C.D.A.2.
Brown, Malcolm John	.... Hillside, Brigsley, nr. Grimsby, Lincs.	C.D.D.2.
Brown, Roland Gore	.... Cropstone House, Cropstone, Leics.	C.D.D.1.
Buckley, Kathleen Cynthia	.... 440 Woodborough Road, Nottingham	C.D.H.1.
Burrows, Anne Patricia	.... Ivonhurst, The Firs, Bowden, Ches.	C.D.H.1.
Butler, Denise Jean	.... 80 Himley Road, Dudley, Worcs.	C.D.D.2.
Casling, Mary Sheila	.... 26 West View Avenue, Glen Hills, Blaby, Leics.	C.D.D.2.
Chapman, Josephine Ivy		
Cheshire, Sheila Grace		

Name.	Address.	Course.
Clarke, Alison Mary	.... 85 Ainsdale Road, Leicester	C.D.A.2.
Clarke, Gillian Toynbee	.... "Greenfield," Bottesford, Nottingham.	C.D.H.2.
Clarke, Roy Keith	.... "Braedene," Manor Road, Ext., Oadby, Leics.	Deg.Agri.3.
Clay, Nora May	.... "Lyncroft," Burton Road, Ashby-de-la-Zouch, Leics.	Deg.Agri.2.
Coates, Peter John	.... Witten Croft, Rinvin, Pershore, Worcs.	Ded.Agri.3.
Cole, Catherine June	.... Roxholme, Sleaford, Lincs.	C.D.D.1.
Cooper, James Eric	.... Fair View, Cote Lane, Hayfield, near Stockport.	C.D.A.1.
Cooper, Joseph Thomas	.... Wilson, nr. Melbourne, Derby	C.D.H.2.
Crane, James Howard	.... Groby Parks Farm, Markfield, near Leicester.	C.D.A.1.
Craven, Michael	.... Firfield Farm, Waddingham, Gainsborough, Lincs.	C.D.A.1.
Culley, Patricia Joan	.... 108 Stoughton Road, Oadby, Leics.	C.D.D.2.
Cunningham, Ruth Luya	.... 11a Eglington Road, Chingford, London, E.4.	C.D.D.1.
Dewhurst, Donald Richard	.... Brookhurst, 8 Sevenoaks Road, Orpington, Kent.	C.D.H.2.
Dexter, Edward	.... Half Moon Inn, Withybrook, Coventry.	Deg.Agri.2.
Downs, Mary Patricia	.... Woodroyde, Esholt Avenue, Guiseley, Yorks.	C.D.A.1.
Drake, Edward	.... "Almondbury," London Road, Chatteris, Cambs.	Deg.Agri.2.
Duffin, Frank	.... 3 Pearl Avenue, East Kirby, Notts.	C.D.A.2.
Edwards, Basil John	.... 1 West Drive, Mickleover, Derby	C.D.A.1.
Edwards, Nany Beryl	.... Reservoir View, Reservoir Road, Whaley Bridge, nr. Stockport.	C.D.H.1.
Ellard, Frederick Henry	.... Tithe Farm, Boundary, Woodville Burton-on-Trent.	C.D.A.2.
Kinsella.	.... 189 Beehive Lane, Ilford, Essex.	C.D.H.1.
Ellis, Mrs. Edith Joyce	.... "Marrowen," Abbey Lane, Aslockton, Notts.	C.D.A.1.
Fayers, David Alexander	.... 42 Gloucester Avenue, Grimsby, Lincs.	C.D.A.1.
Fletcher, Charles Neville	.... Brown's Lodge, Whissendine, near Oakham, Rutland.	C.D.D.1.
Gee, Muriel Enid	.... Greenhill Nurseries, Wombourne, Wolverhampton.	C.D.H.2.
Gittins, Geoffrey Edward	.... 14 Vernon Road, Totley Rise, Sheffield.	C.D.A.2.
Gledhill, James Harrison	.... Wood Lane, North Wheatley, Retford, Notts.	C.D.P.1.
Goacher, Lorna Mary	.... Portland House, Selston Lane, Annesley Woodhouse, Notts.	C.D.A.1.
Godley, Frederick Harry	.... Moor View Farm, Crosspool, Sheffield, 10.	C.D.A.1.
Gosney, Stuart	.... Nether Haugh Farm, Rawmarsh, Rotherham.	C.D.A.1.
Grayson, Philip Hubert	.... 60 Leamington Road, Coventry, Warwick.	C.D.H.1.
Moore.	.... 350 Eachelhurst Road, Sutton Coldfield, Warwicks.	C.D.H.1.
Greenwood, Dilys	.... Burton House, Bedlam Lane, Longford, Coventry, Warwicks.	C.D.H.1.
Gregory, Russell Venn	.... Trebetha House, Burton Stather, Scunthorpe.	
Hackett, Betty Margaret		
Haddow, David Ross Frank		



<i>Name.</i>	<i>Address.</i>	<i>Course.</i>
Hadland, Margaret Winifred.	104 Shirley Road, Acocks Green, Birmingham, 27, Warwicks.	C.D.H.1.
Haines, Michael Roy	Dairy Farm, Coltishall, Norwich, Norfolk.	C.D.A.1.
Hallam, Brenda Winifred.	Garden Lane, Sutton-in-Ashfield, Notts.	C.D.D.2.
Hardstone, Christine Marion.	32 Highfield Avenue, Cambridge	C.D.D.2.
Harries, Letitia Mair	Pilroath, Llangain, Carmarthen, S. Wales.	C.D.D.1.
Harry, Joseph George Llewellyn.	School House, Blackwell, Derbys.	C.D.A.1.
Hartley, Kate	4 Abbey Terrace, Scotforth, Lancaster.	C.D.D.1.
Henderson, Annie Jean	25 Manor Drive, Upton, Wirral, Cheshire.	C.D.A.2.
Hickson, Dorothy Margaret.	19 Nunsfield Drive, Alvaston, Derbys.	C.D.P.1.
Hill, Audrey Valerie	22 Swanhurst Lane, Moseley, Birmingham, 14, Warwicks.	C.D.D.1.
Hill, James Boraston	"Longdon," Roden Avenue, Kidderminster.	C.D.A.1.
Hill, Peter Ira	145 Roll Gardens, Ilford, Essex	C.D.A.2.
Hind, Olive Mary	Edwalton Hall, Edwalton, Notts.	C.D.A.1.
Hodgson, Mildred Sylvia	1 Carlisle Road, Hampton, Mddx.	C.D.P.1.
Hodson, Angela Marion	Te Hira, Moultrie Road, Rugby, Warwicks.	C.D.A.1.
Holder, Dorothy Marion	Ascott, Shipston-on-Stoar, Warwicks.	C.D.D.2.
Holmes, Geoffrey Rowland.	Church Street, Bonington, near Spalding, Lincs.	C.D.A.2.
Houghton, Bernard Holmes.	140 Harestone Valley Road, Caterham, Surrey.	C.D.H.1.
Howard, Dorothy Jean	19 Salisbury Road, Newark, Notts.	C.D.P.1.
Hurt, Ian Lawrence	Moor End, Yardley Gobion, Towcester, Northants.	C.D.D.1.
Hutchinson, Hilda Crampton.	Norwood Farm, Eperstone, Notts.	C.D.H.1.
Ingram, Alan Hedley	47 Mapperley Road, Nottingham	C.D.A.1.
Isaac, Reginald Harry	High Street, Laceby, near Grimsby, Lincs.	C.D.A.2.
Jackson, Valerie	Bradiston Hall, Reepham, Norwich, Morfolk.	C.D.D.1.
Jewson, David Frank	The Close, Douglas Road, Long Eaton, Notts.	C.D.D.2.
Johnson, Daphne Hazel.	Brewery House, Tarbock Green, Nr. Prescott, Lancs.	C.D.D.1.
Johnson, Marion Elinor.	High View, Derby Road, East Kirby, Notts.	Farm Pupil.
Jones, Alan Gwynne	2 St. Marks Avenue, Gabalfa, Cardiff, Glamorgan.	C.D.H.1.
Jones, Lawrence Wilson.	Poole House, Ledsham Road, Little Sutton, Wirral, Cheshire.	C.D.A.1.
Kenworthy, Robert Geoffrey.	Spink Hall, Stocksbridge, Sheffield.	C.D.A.1.
King, Peter Frederick	"Brentwood," Goole Road, Airmyn, Goole, Yorks.	C.D.A.2.
Kirke, Norah	Barnoldby House, Waltham, Grimsby, Lincs.	C.D.D.1.
Knight, Gerald Adrian	220 Melton Road, Leicester	C.D.A.2.

<i>Name.</i>	<i>Address.</i>	<i>Course.</i>
Lambert, Peter William	"Home Close," Matlock, Derbys.	C.D.A.2.
Lamming, George Eric	Vale Farm, Swallow, Caistor, Lincs.	Deg. Agri.2.
Lawton, Olive May	Church Farm, Cauntton, Newark, Notts.	C.D.P.1.
Lewis, Pamela Joan	"The Thatched House," Platt, Borough Green, Kent.	C.D.P.2.
Lindsell, Avril June	Cross Green, Rothley, near Leicester.	C.D.D.1.
Macintosh, Jean	"The Gables," Syston, Leics.	C.D.D.1.
Maddock, Mary Dorothy	3 Debdale Road, Wellingborough, Northants.	C.D.D.1.
Maddock, Ruby Eleanor	3, Debdale Road, Wellingborough, Northants.	C.D.D.1.
Mallalieu, Helen Patricia.	Holmgarth, Gloddaeth Avenue, Llandudno, Carnarvonshire.	C.D.D.1.
Marriott, William Silvester.	Fen Lane, Friskney, near Boston, Lincs.	C.D.A.1.
Marsden, Peter Alan	Slaley House, Wirksworth, Derbys.	C.D.A.2.
Martin, Brenda Mary Allison.	18 Newtown, Thetford, Norfolk.	C.D.D.2.
McLean, Mark	84 Codsall Road, Tetterhall, Staffs.	C.D.A.2.
Merryweather, Beryl Rosamond.	10 College Road, Norwich, Norfolk.	C.D.P.1.
Moore, John Robert Cecil.	104 Holt Drive, Loughborough, Leics.	C.D.A.1.
Moore, Milton James	"Miltonlea," Moorfield Road, Peterborough, Northants.	C.D.H.2.
Mould, Patricia Anne	"Old Meadows," Wergs Road, Tetterhall, Staffs.	C.D.D.2.
Mount, John Reginald	"Sonoma," Bromborough, Wirral, Cheshire.	C.D.A.1.
Murray, John Farquharson.	"Athole," Harestone Drive, Valley Road, Caterham, Surrey.	C.D.H.1.
Musgrave, Ciceley Mary	7 Gladstone Terrace, Grantham, Lincs.	C.D.D.1.
Neaverson, Doreen Elizabeth.	Carlton Hayes Farm, Narborough, near Leicester.	C.D.P.2.
Neish, Gerald Mello	93 West Common Lane, Old Brumby, Scunthorpe, Lincs.	C.D.A.2.
Nelstrop, Evelyn Joy	"The Old Hall," Leadenham, Lincoln.	C.D.P.2.
Neville, Anthony William	Whisby Hall, Lincoln	C.D.A.2.
Newell, Janet Mary	17 Devonshire Avenue, Beeston, Notts.	C.D.D.2.
Newenham, John Edmund Worth.	Coolmore, Carrigaline, Co. Cork, Eire.	C.D.H.1.
Newton, Eileen Watson.	252 Highfield Road, Hall Green, Birmingham, 28, Warwicks.	Deg. Agri.2.
Norman, Robert George	30 Wood View, Renishaw, near Sheffield.	C.D.H.1.
Odgers, Olive Mary	Monkerton Manor Farm, Pinhoe, near Exeter, Devon.	C.D.D.1.
Oram, Guy Christopher	Burbage House, Hinckley, Leics.	C.D.A.1.
Orr, Sheila Jean	Riversdale, Blackfield Lane, Kersal, Manchester, 7, Lancs.	C.D.H.1.
Osbourne, Corinne Winifred.	22 The Park, Grimsby, Lincs.	Farm Pupil.
Owen, Betty Edge	18 Holmfild, Burbage, Buxton, Derbys.	C.D.D.1.
Parker, George Brian	Hill Top House, Dronfield, near Sheffield.	C.D.A.1.



<i>Name.</i>	<i>Address.</i>	<i>Course.</i>
Pepper, John Edward ....	Poole Farm, Quorn, Fields, Loughborough, Leics.	Deg. Agri. 3.
Piercy, Harold John ....	272 Highfield Road, Hall Green, Birmingham, 28, Warwicks.	C.D.H. 1.
Plant, Keith Reginald	104/106 Carlton Road, Lowestoft, Suffolk.	C.D.A. 1.
Poore, Anne Harriet ....	The Steps, Withington, Cheltenham, Gloucs.	C.D.D. 1.
Powell, John Dudley ....	64 Park Side, Wollaton Vale, Beeston, Notts.	C.D.A. 1.
Quarmby, Jack ....	19 Lidget Street, Lindley, Huddersfield, Yorks.	C.D.A. 2.
Raithby, Ernest Leonard	Station House, Market Rasen, Lincs.	C.D.A. 1.
Redgate, Patricia ....	"Greengates," Nicker Hill Top, Stanton-on-the-Wolds, Notts.	C.D.H. 2.
Richardson, Joyce ....	4 Eastwood Avenue, Grimsby, Lincs.	C.D.D. 2.
Richmond, Doreen ....	Leylands House, Conistone, Skipton, Yorks.	C.D.H. 1.
Richmond, John ....	71 Winchester Road, Countesthorpe, nr. Leicester.	C.D.A. 2.
Roberts, Dorothy ....	High Gable, Park Lane, Congleton, Cheshire.	C.D.D. 2.
Roberts, Nest Alwyn ....	28 Picton Terrace, Carmarthen, S. Wales.	C.D.D. 2.
Roberts, Vivian Mary ....	"Polmear," Mary's Well, Illogan, near Eedruth, Cornwall.	Deg. Agri. 2.
Rogers, Bridget....	Tristan, Houghton-on-the-Hill, Leics.	C.D.D. 2.
Rollett, Faith Avril ....	64 Ordsall Park Road, Retford, Notts.	C.D.D. 1.
Rundle, Elizabeth Mary	12 Beech Road, Bournville, Birmingham 30, Warwicks.	C.D.D. 2.
Russell, Sylvia Mary ....	Field Head, Station Road, Cropstone, Leics.	C.D.A. 2.
Sewell, Serena Jill ....	5 Corby Road, Mapperley, Nottingham.	Deg. Agri. 2.
Shepherd, Janet Sarah....	13 Chaucer Terrace, Grantham, Lincs.	C.D.D. 2.
Shucksmith, Philip ....	High Street House, Alvingham, Louth, Lincs.	C.D.A. 2.
Silverwood, Robert ....	Woodlands, Chellaston, Derby	C.D.A. 1.
McAuslan.		
Simkins, Hilary Nita ....	The Poplars, Talbot Street, Nottingham.	C.D.D. 1.
Sinclair, Iain Fergus ....	Tollgate Farm, St. Albans, Herts.	C.D.A. 1.
Crawford		
Slade, Janet Suzanne ....	Burton Farm, Curry Rivel, Taunton, Somerset.	C.D.D. 1.
Smalley, Maureen ....	"Runswick," Villa Grove, Heworth Green, York.	C.D.H. 2.
Sylvia.		
Smith, Brian William	Fairmead, Burraton, Satlash, Cornwall.	Deg. Agri. 2.
Robert.		
Smith, David Allan ....	95 Charles Street, Newark, Notts.	C.D.A. 2.
Smith, Jean Margaret ....	17 Nunsfield Drive, Alvaston, Derby.	C.D.D. 2.
Smith, Joyce Emily ....	"Montana," South Somercotes, Louth, Lincs.	C.D.P. 1.
Stanfield, Samuel Victor	Wood Farm, Woodborough, Notts.	C.D.A. 1.
Stead, Roger Cecil ....	St. Ermys, Ashover, Derbys.	C.D.A. 1.
Markham.		

<i>Name.</i>	<i>Address.</i>	<i>Course.</i>
Stevenson, Marguerite	Blackbrook House, Blackbrook, Near Belper, Derbyshire.	Deg. Agri. 3.
Daphne.		
Stewart, Ena Margaret	532 Loughborough Road, Birstall, Leicester.	C.D.A. 2.
Stirrup, Patricia Mary	27 Bridge Fields, Kegworth, Derbys.	Deg. Horti. 2.
Straight, John Derrick	53 Trevelyan Crescen-, Preston Road, Harrow, Middlesex.	C.D.H. 1.
Sykes, Charles Keith ....	7 Helme Lane, Meltham, near Huddersfield, Yorks.	C.D.A. 2.
Tatem, Robert Bellwood	Hall Farm, Harpswell, Gainsborough, Lincs.	C.D.A. 1.
Taylor, Josephine ....	Park Farm, Grundisburgh, near Woodbridge, Suffolk.	C.D.D. 2.
Elizabeth.		
Taylor, Madeleine Claire	22 Woodhill Grove, Prestwich, Manchester, Lancs.	C.D.D. 2.
Taylor, Peter William ....	29 Windlesham Gardens, Brighton, Sussex.	C.D.A. 2.
Thompson, Joyce ....	Thornfield House, Old Chilwell, Notts.	C.D.H. 2.
Violetta.		
Thompson, Keith James	133 Newark Avenue, Peterborough, Northants.	C.D.A. 2.
Thompson, William Allen	72 Roman Road, Birstall, Leicester.	C.D.A. 1.
Thurley, John William	7 Campbell Road, Bedford	C.D.A. 2.
Todd, John Cecil ....	22 Cavendish Vale, Sherwood, Nottingham.	Deg. Horti. 2.
Townsend, Lois Mary ....	St. Malo"" Station Road, Scholes, near Leeds, Yorks.	C.D.H. 2.
Trendell, Eric Michael	Longstone Vicarage, nr. Bakewell, Derbys.	C.D.A. 1.
Truman, Robert ....	The Cottage, Waterhouse Lane, Gedling, Notts.	C.D.A. 2.
Frederick.		
Turton, Joan Eileen ....	"Picton Court," Coychurch Road, Bridgend, Glam.	C.D.H. 2.
Upton, Ronald Dennis....	Top End, Epwell, Banbury, Oxon.	C.D.A. 1.
Vaux, Gilbert Newton	Orchardleigh, South Petherton, Somerset.	C.D.A. 1.
Wall, Neil ....	School House, Heath, Chesterfield, Derbys.	C.D.D. 1.
Ward, Edward Roy	156 Perry Road, Sherwood, Nottingham.	C.D.A. 1.
Warrener, Henry Mellors	Holbeck Hall Farm, nr. Worksop, Notts.	C.D.A. 2.
Watson, Margaret Lucy	43 Fountainhall Road, Edinburgh, 9, Scotland.	C.D.H. 1.
Prior.		
Webb, Laurence Fortman	105 Wragby Road, Lincoln	C.D.H. 1.
Webster, Richard Henry	7 Mill Crescent, Cross Street, Arnold, Notts.	C.D.H. 1.
Wedel, Joyce ....	"Sundial House," Culcheth, near Warrington, Lancs.	C.D.D. 1.
Westacott, Rachel June	Morants Court Farm, Dunton Green, Sevenoaks, Kent.	C.D.P. 2.
Christine.		
Weston, Dennis Tansley	Ravenshead Wood, Papplewick, Notts.	C.D.A. 2.
Wheelhouse, Margaert	Thornhill Farm, Well Lane, Wath-on-Deerne, near Rotherham.	C.D.D. 1.
White, Alan Castledine	13 High View Avenue, Keyworth, Notts.	C.D.A. 1.



<i>Name.</i>	<i>Address.</i>	<i>Course.</i>
White, Jerry ....	43 Oak Road, Redcar, Yotks. ....	C.D.A.2.
White, Mary Elizabeth	Hellicars Farm, Frome, Somerset	C.D.D.2.
Wilkinson, Geoffrey ....	15 Caledon Road, Sherwood, Nottingham.	Deg. Agri.3.
Delves,		
Wilkinson, John Richard	264 Walton Breck Road, Liverpool	C.D.A.2.
Williams, Mary Priscilla	Windyridge, Almondsbury, near Bristol, Glos.	C.D.H.1.
Willis, Dorothy ....	Manor House, Caperby, Leyburn, Yorks.	C.D.H.1.
Elizabeth,		
Wills, Alice Rosemary	Osease, Belbins, Romsey, Herts.	C.D.A.1.
Wilman, Roy ....	Rivilin, Melton Road, Sprothoro', Doncaster.	C.D.A.2.
Wilson, Gladys ....	Lower White Carr Farm, Whaley, near Blackburn, Lancs.	C.D.A.2.
Woodward, Bryan Arthur	6 Herbert Road, Sherwood Rise, Nottingham.	Deg. Agri.3.
Yeoman, Yvonne ....	28 Royal Crescent, Bath, Somerset	C.D.D.1.

## OLD STUDENTS' ASSOCIATION

# ASSOCIATION COLOURS

PRICE LIST suspended for the present  
owing to conditions prevailing.

**TIES** and **SQUARES** are available under quota  
restrictions, and orders for **BLAZERS** can be  
accepted for completion as B. of T. release of  
material permits.

*All enquiries will receive our prompt attention.*

Colours are supplied solely by the Official Outfitters to the  
**MIDLAND AGRICULTURAL COLLEGE**  
**OLD STUDENTS' ASSOCIATION**

## BAILEY & SIMPKIN Ltd.

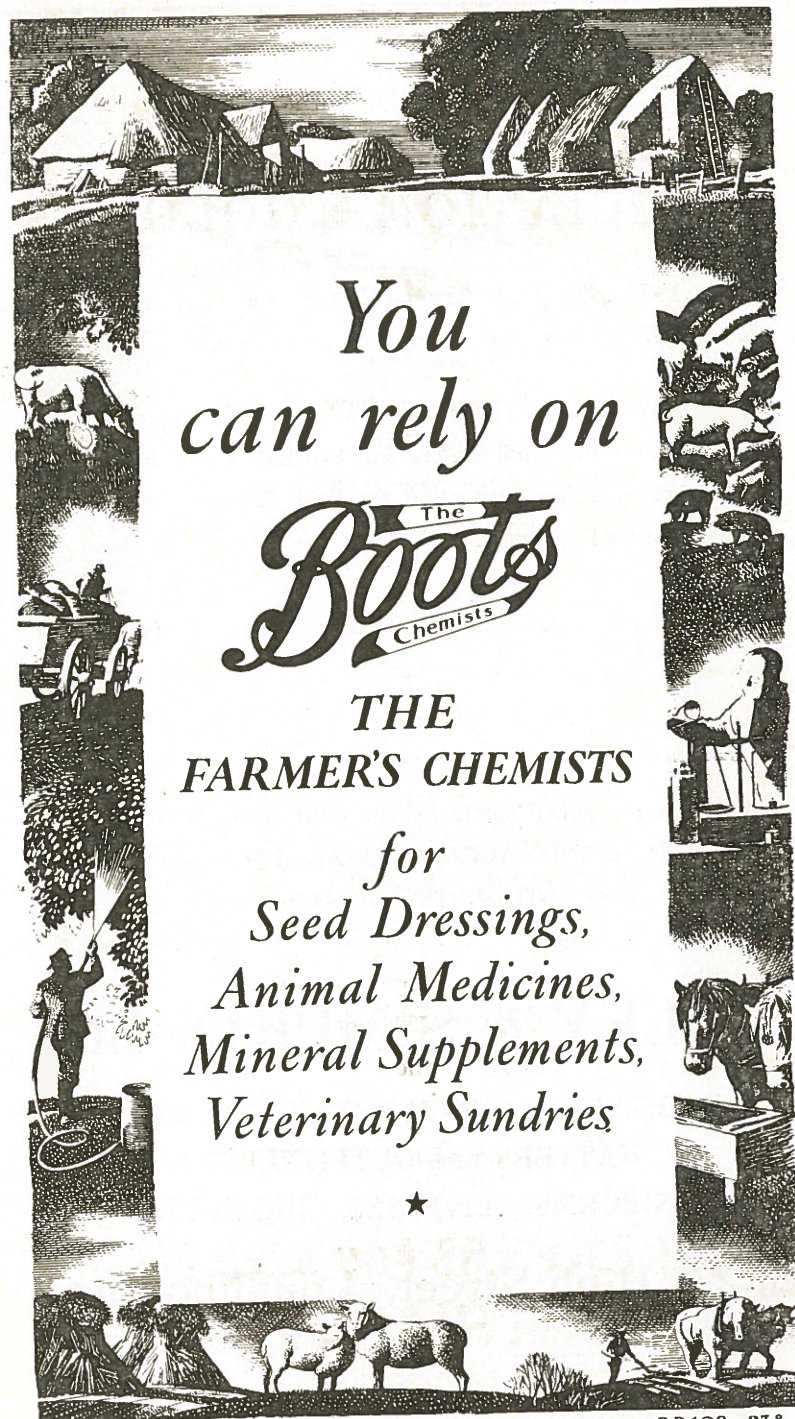
LADIES' and GENTLEMEN'S TAILORS,  
HATTERS and OUTFITTERS  
UNIFORMS, LIVERIES, BREECHES

**26-27, High Street, Loughborough**

Phone 2605.

LEICES.





*You  
can rely on*

**The  
Boots  
Chemists**

**THE  
FARMER'S CHEMISTS**

*for  
Seed Dressings,  
Animal Medicines,  
Mineral Supplements,  
Veterinary Sundries*

★

BB109-238

# Gartons

For well-nigh 50 years we have preached **QUALITY** and **STRAIN** in relation to Farm Seeds, and the following extract from a recent issue of the New Zealand Journal of Agriculture will be of peculiar interest to our clients:—

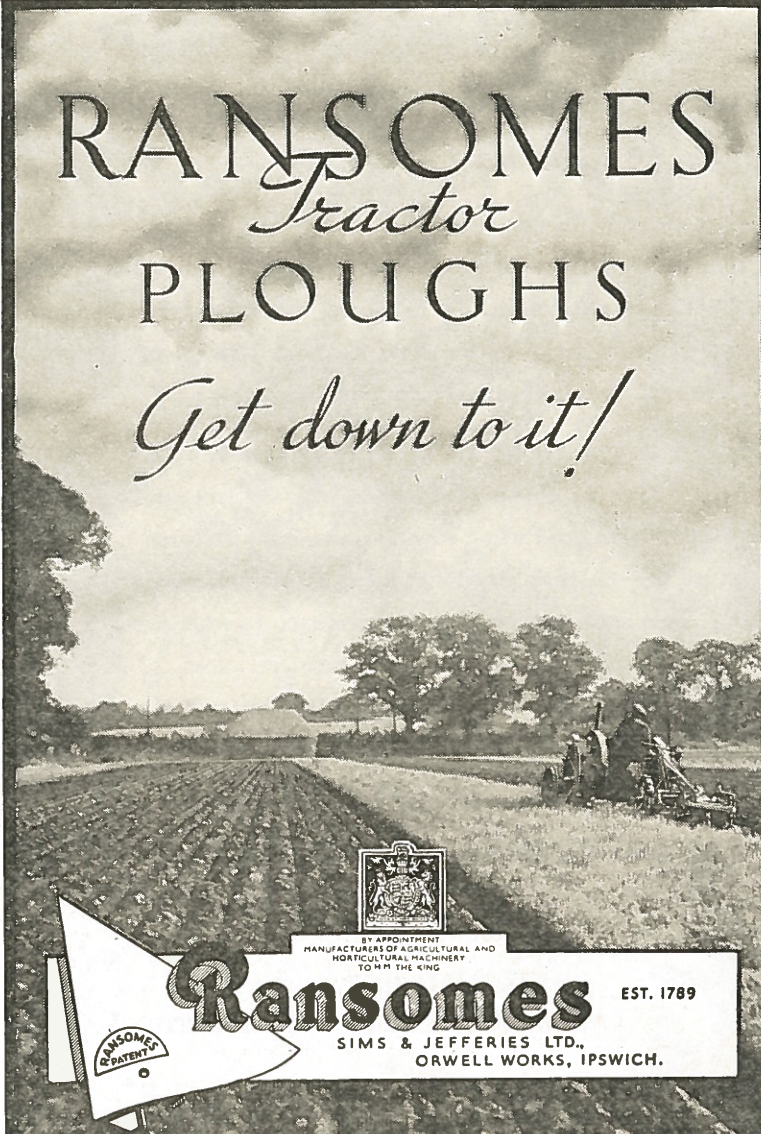
“ . . . One can still read advertisements in the press . . . offering lines of cheap seed, while one still meets farmers who are using such seed when sowing down new pastures . . . Human nature is such that anything cheap is attractive, and the cheap Seed Merchant, in taking advantage of this weakness, has caused many farmers serious financial loss . . . . . Remember always that the only one who makes a profit out of cheap seeds is the man who sells them.”

Our annual sales of “The Garton” Mixtures comprise 84% **GARTON-BRED** and 16% Commercial Strains. Our clients, at any rate, appreciate **QUALITY** and **STRAIN** and are prepared to pay—or rather invest—in them.

CATALOGUES FREE ON APPLICATION

**PLANT BREEDERS AND SEED EXPERTS  
WARRINGTON**





RANSOMES  
*Tractor*  
PLOUGHS  
*Get down to it!*

BY APPOINTMENT  
MANUFACTURERS OF AGRICULTURAL AND  
HORTICULTURAL MACHINERY  
TO H.M. THE KING

**Ransomes** EST. 1789  
SIMS & JEFFERIES LTD.,  
ORWELL WORKS, IPSWICH.

RANSOMES  
PATENT

Telephone 43531

## *Sisson & Parker Ltd.*

for

BOOKS ON ALL SUBJECTS

STATIONERY

FOUNTAIN PENS

HANDICRAFT MATERIALS

TOYS AND GAMES

LEATHER AND FANCY GOODS

TOILET REQUISITES



*Wheeler Gate, Nottingham*



*Farmers and Cowmen*

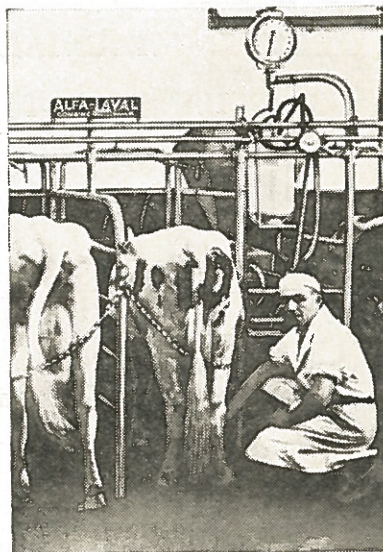
*tell  
convincing facts of their*

**ALFA-LAVAL**

**COMBINE-RECORDER**

"Haven't missed a milking in eight years," writes one. Others speak of 10, 15, even 20 years continuous service

The gentle, pleasing, soothing action of an ALFA-LAVAL will help your cows let down their milk faster, give more milk. Safety and reliability are built-in features.



**THE MACHINE YOU WILL EVENTUALLY BUY!**

**ALFA-LAVAL COMPANY LTD.**  
GREAT WEST ROAD, BRENTFORD, MIDDX.

SEAMLESS COVERED MILKING PAILS  
SEAMLESS MILK STRAINERS  
SEAMLESS MILK CHURNS

Cheese Vats Cheese Moulds Curd Knives  
etc., and all Cheese making Appliances  
Sterilising Outfits

Bottle Filling & Bottle Washing Machines

ALSO DAIRY UTENSILS  
IN STAINLESS STEEL

*Send for illustrated catalogue to the ACTUAL MAKERS*

**VIPAN & HEADLY LTD.**

ABBEY GATE, LEICESTER.

'Phone 58578

Telephone : 2980 Loughborough.

**J. SKETCHLEY**

**BOOKSELLER**

and

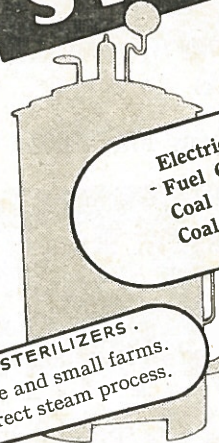
**STATIONER**

LENDING LIBRARY

**25, High Street, Loughborough.**



*High Efficiency*  
**STEAM**



Electricity  
Fuel Oil  
Coal Gas  
Coal and Coke

*From*  
by Perkins Power Boiler  
by Perkins Patomic Boiler  
by Perkins Paramount Boiler  
by Perkins Phantom  
Jubilee and Progress Boilers

**STERILIZERS.**  
For large and small farms.  
For correct steam process.

See Min. of Agric. and Fisheries  
Bulletin No. B.588/T.P.B.

**PERKINS CME LTD**

Dept. M.A.M. Nottingham Road, Derby.