

C. W. Roberts

Vol. III.—No. 2.

MARCH, 1918.

PRICE 6d.

THE M.A.D.C. MAGAZINE

• CONTENTS •

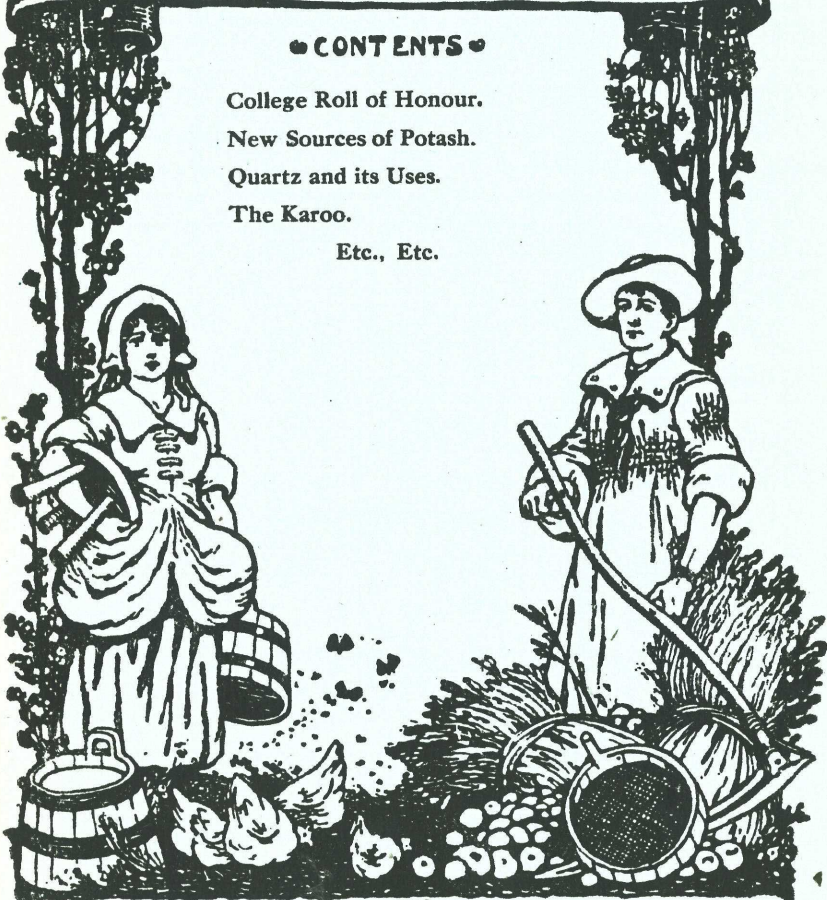
College Roll of Honour.

New Sources of Potash.

Quartz and its Uses.

The Karoo.

Etc., Etc.



THE
MIDLAND AGRICULTURAL AND DAIRY COLLEGE
KINGSTON • DERBY •

STRELAND BROWN 1918

O. C. O.

"THE BRAND OF PURITY"

SOYCOT CAKE

(Manufactured by the Olympia Oil and Cake Co., Ltd.)

'SOYCOT'

is a genuine absolutely Pure Oilseed Cake. It is not a Compound Cake full of Spice and indigestible waste matter.

'SOYCOT'

has the same feeding value as 12% Linseed Cake; is guaranteed to give Better Feeding and Rearing Results and is far more economical in use.

FOR DAIRY PURPOSES "Soycot" has proved itself unquestionably superior to any other Cake

GUARANTEED ANALYSIS:—

6% Oil, 30% Albuminoids, = **128 FEEDING UNITS.**

Territorial Rebates on Orders from Northern, North Western and North Midland Counties.

NO AGENTS

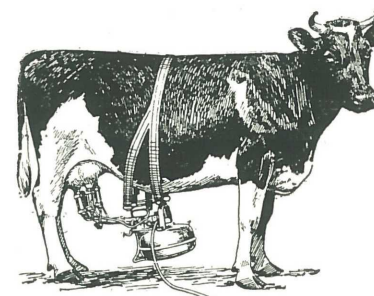
Address all enquiries (giving name of Railway Station) to:—

**OLYMPIA AGRICULTURAL & PURE STOCK FARMS LTD.,
SELBY, YORKS.**

The Manus Milking Machine

Is the result of Many Years' Careful Experience.

Seven
Highest
Awards.



Thousands
of Machines
in Use.

Five Important Points.

- 1 Easier to handle and operate than any other machine.
- 2 Milks quicker, safer, and more gently than the most skilled hand-milker.
- 3 There are no long rubber tubes to contaminate the milk.
- 4 No risk of injury to the cow.
- 5 Milk greater in quantity and superior in quality to that obtained by hand-milking.

Write TO-DAY for Full Particulars

BOVING and CO., Ltd.,

56, Kingsway, London, W.C.2.



BY APPOINTMENT.

IZAL

THE MODERN HIGH-POWER GERMICIDE

"In IZAL they had put in their hands a worthy and formidable weapon for battling against the bacillus."

Sir Jas. Crichton-Browne, F.R.S.

Officially adopted throughout the
—BRITISH EMPIRE.—

Ideal for use in Dairy Sanitation, the prevention of Tuberculosis and all infectious diseases.

Cures and prevents Contagious Abortion.
Mixes equally well in Soft, Hard and Sea Water.

Scientific reports, samples and instruction pamphlets sent post free on application to

NEWTON, CHAMBERS & Co., Ltd.,
THORNCLIFFE, nr. SHEFFIELD.

Fertilisers & Feeding Stuffs

Sulphate of Ammonia	Compound Cake & Meals
Basic Slag	Palm Kernel Cake & Meal
Superphosphate	Linseed Cake
Compound Fertilisers	Cotton Cake
Bones, Steamed, etc.	" " Decorticated
Salt	Cottonseed Meal "
Lime, Lump & Ground	Rice Meal
Nitrate of Soda	Treacle
Corn & Offals	Peat Moss Litter
and all Feeding Stuffs.	

Seed Corn for Spring and Winter Sowing.

When applying please state requirements.

Clement Swaffield & Son,
Derby.

Telephone No. 58.



G. C. OGLE & SONS, Ltd.,
Agricultural Engineers and Ironfounders,
CART, WAGON AND VAN BUILDERS,
RIPLEY, DERBY.

IMPLEMENTS AND MACHINES BY ALL
THE BEST MAKERS AT LOWEST PRICES.

LOCAL AGENTS FOR
MASSEY HARRIS, RANSOMES, SIMS & JEFFRIES, LTD.,
TEASDALE BROS., LTD., WOLSELEY SEPARATOR CO., LTD.,
BAMFORDS, LTD., BLACKSTONE & CO., LTD., AND ALL THE
LEADING MAKERS.

Large Stock of Fittings kept at our Depots:
Nottingham, Derby and Mansfield.

VIPAN & HEADLY

LEICESTER.

For 26 years VIPAN & HEADLY'S RAILWAY CHURNS have never been beaten at the London Dairy Show, at which they have been awarded
17 FIRST PRIZES.

**Railway Milk Churns,
Delivery Churns,
Hand Carts,
Milk Carriages.**
DAIRY UTENSILS OF EVERY DESCRIPTION.

New General Purpose and Milk Delivery Float.

ILLUSTRATED CATALOGUE OF
**DAIRY GOODS, FLOATS, CREAM
SEPARATORS, &c.**

Post free on application.



DON'T KEEP POULTRY!

MAKE POULTRY KEEP YOU!

FOR REARING, FATTENING AND EGG PRODUCTION

"TRENT" Pure Sussex Ground Oats

ARE UNEQUALLED.

Increasing Sales testify to their excellent quality.
Guaranteed Milled on the GENUINE SUSSEX
METHOD AND ABSOLUTELY PURE.

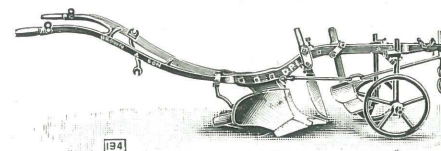
"TRENT" Complete Dry Mash.

DRY CHICK FOODS. CALF MEAL. FISH MEAL.
BISCUIT MEALS. CLOVER MEAL. DRIED YEAST.
AND ALL OTHER FEEDING STUFFS.

Write for Samples and Prices—

E. J. STEVENS & SON,
Trent Corn Mills, SHARDLOW near DERBY.

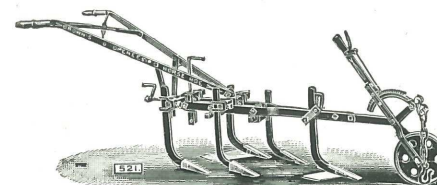
BROWN'S FAMOUS PLOUGHS



For economy in ploughing use a Digging Plough. Our latest type cuts a 12in. furrow right through. Will plough up to 14 in. wide by 10 in. deep, saving at least 25 per cent. in time and labour

GEO. BROWN & SON, Plough Works,
LEIGHTON BUZZARD

BROWN'S "OPENEESI"

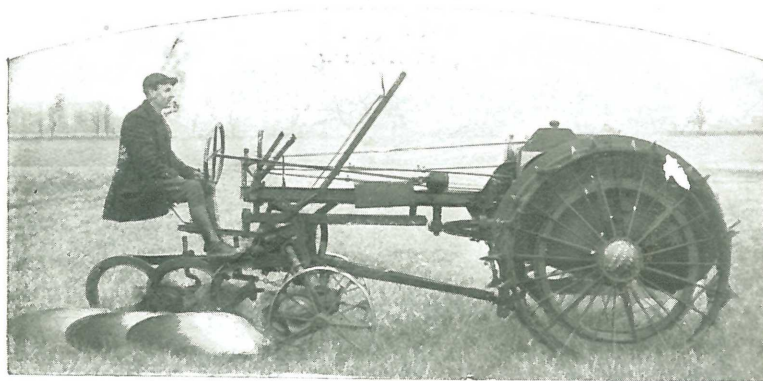


PARALLEL EXPANDING HORSE HOE.
Six Silver Medals (Highest Awards). Thousands sold. Scores of repeat orders. The latest product of a firm which makes SIXTY-FIVE different pattern Horse Hoes.

GEO. BROWN & SON, Plough Works,
LEIGHTON BUZZARD

MOLINE UNIVERSAL ONE MAN TRACTOR.

Complete with Rear Truck and 3-Furrow Plow. £375.



The Moline—

- | | | |
|---|---|--|
| <ol style="list-style-type: none"> 1. Weighs 25 cwt. 2. Has ample power—18 B.H.P. 3. Land and furrow wheels fitted with spuds acknowledged to be the most efficient. | <ol style="list-style-type: none"> 4. Readily accessible for repairs. 5. Ploughs at about 3 miles per hour. Speeds 1 forward, 1 reverse. 6. Is the only real 1-man outfit on the market, whether used with | <ol style="list-style-type: none"> plough, harrow, cultivator, binder, or mower. 7. Turns in 15 ft.—means a narrow headland. 8. Is economical in fuel—$2\frac{1}{4}$ gallons per acre. |
|---|---|--|



SOLE BRITISH CONCESSIONAIRES—

BRITISH EMPIRE MOTORS, LTD.

EMPIRE HOUSE, 115 FULHAM ROAD,
SOUTH KENSINGTON, S.W.

Deliveries
from stock.

Telephone, Kens, 5439.
Telegrams, Knockout, London.

ESTABLISHED
133 YEARS.



ESTABLISHED
133 YEARS.

R. J. FULLWOOD & BLAND'S

"STAG" BRAND

ANNATTO

"DAIRY" BRAND

RENNET

"OLEO" AND "SUNBEAM" BUTTER COLOUR.

The above preparations command the largest sale
in Great Britain, and are used and recommended at
:: THE PRINCIPAL DAIRY INSTITUTES. ::

GERMANS have never had any interest in R. J. F. & B.'s
firm, which has always been carried on by British partners
with British capital. A firm claiming to be British and the
only makers of Cheese rennet in this Country **CANNOT SAY THIS.**

RENNET FACTORY, ELLESMERE, SALOP.

Offices: 31, 33 & 35 Bevis Street, Hoxton, London, N.

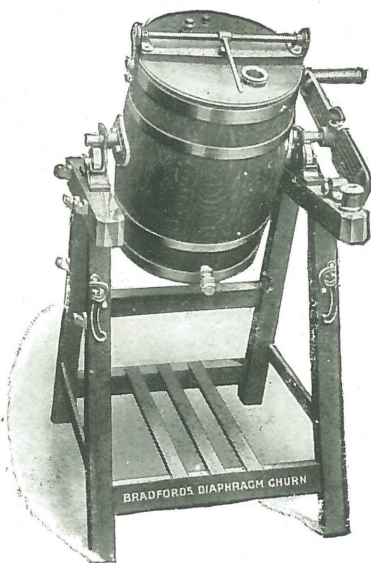
BRADFORD'S "DIAPHRAGM" CHURN

WITH NEW PATENT SINGLE HANDLE LID FASTENER.

The "SIMPLEST"
and "LATEST" in
CHURN
FASTENERS.

Ensures an effective
joint in the minimum
of time

Used with great suc-
cess by competitors
in the principal But-
ter making Compe-
titions and in the
leading Dairy Schools.



LONDON
DAIRY SHOW
BUTTERMaking
CONTESTS.

Users of
BRADFORD'S
"DIAPHRAGM"
CHURN,
with New Patent
Single Handle Lid
Fastener have won the
CHAMPION PRIZE and
LORD MAYOR'S CUP
almost continuously for
many years past.

"ASTLE" AND "ALDERNEY" BUTTER WORKERS.
"FISHBACK" QUICK-SPEED CHURN.
"DECLIVITY" BOX CHURN.
CREAM SEPARATORS.

BRADFORD'S "Vowel" WASHER

SAVES TIME
LINEN
LABOUR

Will wash a batch of linen in
one-half the usual time.
Has no internal mechanism.
Is easy in operation.

MADE IN SIZES AND TYPES TO SUIT ALL HOUSEHOLDS.

"EVERYTHING for the DAIRY & HOUSE."

Catalogue post free.

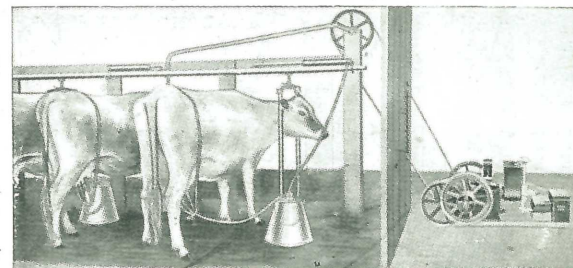
T. BRADFORD & CO.,
MANUFACTURERS,

Crescent Iron Works, SALFORD.

141-2 HIGH HOLBORN, LONDON. 130 BOLD STREET, LIVERPOOL.
1 DEANS GATE, MANCHESTER.

The "HINMAN" Milker

is the
Milker
that
cannot
injure
the Cow



Over 2,000 "Hinman" Milkers
have been sold in Great Britain
in the last two years. We have
received most enthusiastic letters
from their users. Write for copies
and full explanatory Catalogue.

Each unit works separately.

Price £15

per unit, to milk from
7-9 Cows per hour.

The Associated Manufacturers Co., 72 Mansell St., London, E. 1.

MODERN FARMING

The Journal that deals with

**New Ideas for Greater Production,
Labour Saving Devices,
Newest Machinery,**

Month by month in their
relation to British farming.

Annual Subscription 3/-

Send for a free specimen copy to

Modern Farming, Box A, 124 Minories, London, E. 1.

H. HOPKINSON, Ltd.

STATION STREET,
NOTTINGHAM.

AGENTS AND DEPOT FOR

"URALITE" SHEETS

Best Fire-Resisting Material in the World.

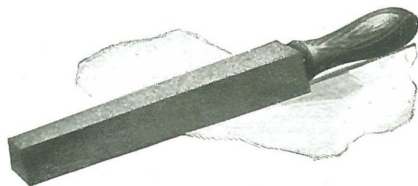
'ASBESTONE' NON-CONDUCTING
and FIRE-RESISTING.

IN SHEETS, for Walls, Ceilings, and Partitions.

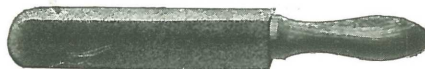
IN TILES, for Roofing. Specially recommended
for Cattle Sheds, &c.

CARBORUNDUM

FILES AND
SCYTHE STONES.



No. 57.



No. 59.



No. 191.



No. 191a.



No. 190a.

WELLS'
Whitewashing Machines



Special
Pattern
for
Farmers
and
Dairy
Use

KEYSTONE LINKS, all sizes, for repairing broken chains.



Photo, Winter, Derby.

MISS BLUNT.

Contents.

	PAGE
Frontispiece—Miss Blunt	—
Editorial	3
Roll of Honour	5
Captain Alexander Murray	11
New Sources of Potash	13
“O Pip”	17
The Karoo	19
An Author’s Musings	20
Quartz, its Varieties and Uses	23
Our Work at Kingston	25
Things to which we Listen and Marvel Concerning	26
Meatless Days	27
Sports	28
Students’ Association	30
Subscribers	31

EDITORIAL.

We had hoped that the world would once more be at peace when the College Magazine made its appearance this year, but unfortunately it must again be a "War Edition." Owing to the conditions imposed by prolonged warfare, it has become necessary to slightly reduce the size of this year's Magazine, but every effort has been made to maintain the usual standard, and we trust that our readers will find this copy as interesting as former editions.

The world shortage of food has made Agriculture of vital importance, and the difficulties with which the agriculturist has to contend, continue to become more numerous. It is doubtful whether there is any other profession or trade which is at the mercy of so many "Controllers" and "Committees" as farming. Many modifications and much progress is being witnessed in the agricultural world, and we are hearing much of the proposed Agricultural Party in Parliament. Undoubtedly agriculture would benefit if it was more strongly represented by members who have an intimate knowledge of the subject. It is, however, often stated that the characteristics of a successful farmer are in exact opposition to those of a brilliant politician. For the proof of this, however, we must "wait and see."

The College has experienced another busy year. The number of female students attending the Winter Session compares favourably with former years, and the enthusiasm shown by those taking the "War-time" Course in Agriculture has been very gratifying.

We again publish the College Roll of Honour, showing a number of additions, and unfortunately the list of those gallant men who have laid down their lives has increased since last year. It will be learned with regret by our readers that a late member of the College Staff—Captain Murray—is included in the list.

W. Thornley & Son,
 = = Printers, = =
 Bowling Green Street,
 = = Leicester = =

This year we add Miss Blunt to our "portrait gallery," and we feel sure that a more welcome addition could not have been made. In the official capacity of Instructress in Dairying, Miss Blunt enjoys the confidence of the dairy world, and is deservedly popular amongst a wide circle of friends.

Changes in Staff have been few since our last issue. In October, 1917, Miss Howard, Instructress in Butter-making, resigned. She was succeeded by Miss F. Robinson. Miss F. M. Hextall resigned her post as Assistant in the Poultry Department, in December last, to take charge of the Poultry Station at Llewenni, under the University of Bangor. She was succeeded by Miss N. Scott. In January of this year Miss Ball was appointed Assistant Matron.

In conclusion we wish to draw our readers' attention to the "Notices," and would remind those who omitted to send their subscriptions for last year's copy of the *M.A.D.C. Magazine*, that it is not yet too late to do so.



NOTICES.

The Editor will be pleased to receive literary contributions to the next number of the *M.A.D.C. Magazine*. M.S.S. should be forwarded before December 31st, 1918.

Readers are again requested to notify the Editor of changes in address.

The Hon. Secretary will be glad to receive notice of additions to and alterations of, the Roll of Honour, so that it may be kept up to date.

The Fiction Library and the Piano Fund of the Students' Association are in need of help. The Hon. Secretary would be glad to receive contributions.

PLEASE DO NOT FORGET TO FORWARD YOUR SUBSCRIPTION FOR THIS MAGAZINE.

BUY NATIONAL WAR BONDS NOW.

Roll of Honour.

KILLED IN ACTION.

ELLWOOD, C. H., Lieut., 4th Batt. Lincolnshire Regt. June 1st, 1915, in Belgium.
 BENSON-BROWN, L., Private, 72nd Canadian Seaforth Highlanders. Sept. 5th, 1916, in France.
 COMPTON, A. G., Lance-Corpl., 13th North Canterbury and Westland Regt. (New Zealand Expeditionary Force). Sept. 21st, 1916.
 STAFFORD, H. H. O., Sec.-Lieut., 11th West Riding Regt. October 4th, 1916, in France.
 CHEATLE, C. C., Sec.-Lieut., 8th York and Lancaster Regt., attached R.F.C. May 5th, 1917.
 HARRISON, C. N., Pte., 18th Manchesters. June 13th, 1917, at Ypres.
 JONES, LLOYD, Pte., 4th Yorkshire Regt. January 17th, 1917.
 MURRAY, A., Capt., Scottish Horse. Aug. 14th, 1917.
 RUDKIN, C., Corpl., Lincolnshire Yeomanry. Nov. 11th, 1915, on transport *Mercia*.

REPORTED MISSING, BELIEVED KILLED.

THOMAS, J., Sec.-Lieut., West Riding Regt., May, 1917.

STIVEN, K. C., Hon. Sec.-Lieut., relinquished commission on account of wounds received on active service.
 MCKAY, H., invalided out of Army.
 NICHOLSON, A., discharged in consequence of wounds received on transport *Mercia*, torpedoed in the Mediterranean, Nov., 1915.
 WILLOWS, S., discharged in consequence of wounds received at Sulva Bay.
 MILNER, G., discharged Feb. 6th, 1918, after 3½ years' service; no longer fit for Military Service.
 KIRK, F. L., Pte., discharged 1917.
 STEDEFORD, L. H., Staff-Sergt., discharged 1917.
 BALL, D., Sergt., discharged.

DECORATIONS.

WARWICK, H. B., Lieut.-Colonel, Mentioned in Dispatches.
 POTTER, W. A., Lieut.-Colonel, D.S.O.
 ELLWOOD, A. A., Major, D.S.O., M.C.
 GOLDING, J., Captain, D.S.O.
 CROSBY, R. D., Captain, M.C.
 WALLACE, J. C., Lieut., M.C.
 BOND, K. HILLS, Lieut., M.C.
 HILL, A. E. F., Lieut., M.C.
 GODSMARK, R., Sec.-Lieut., M.M.
 SMITH, F., Sergt., M.M.
 ROWLAND, F., Pte., M.M.
 WHARAM, W. S., Pte., M.M.

SERVING WITH THE FORCES.

Staff.

MCCREATH, H. M., Lieut., Royal Scots Fusiliers.
 STAFFORD, J. G. W., Lieut., M.G.C.
 WALLACE, J. C., Lieut., R.E.
 BEALE, J. H., Coy. Q.-M.-Sergt., 1st 7th Notts. and Derbyshire Regt.
 KNOWLES, F., Pte., 2nd 7th Notts. and Derbyshire Regt.
 FOX, G. O., Pte., 42nd Labour Company.

Late Members of Staff.

GOLDING, J., Capt., R.A.M.C. (Sanitary Corps).

Students.

COMMISSIONED OFFICERS.

ABBOT, W. I., Lieut., 9th Lincolnshire Regt.
 ABRAHAM, J., Lieut.
 ABRAHAM, C. C., Shropshire Light Infantry, attached R.F.C.
 ARTER, J. H., Capt., Australian Imperial Force.
 ASHWORTH, L., Sec.-Lieut., 16th West Yorks.
 BOND, K. HILLS, Lieut., Indian Army.
 BARKER, H. G., Sec.-Lieut., Staffordshire Yeomanry.
 BURKITT, J. R., Sec.-Lieut., 8th Reserve Cavalry.

BLUNT, J. V., Sec.-Lieut. 5th South Staffordshire Regt.
 CAUKWELL, C. A. B., Sec.-Lieut., R.F.C.
 CAMPBELL, G. N., Sec.-Lieut., R.F.C.
 DAVIE, A. W., Lieut., R.N.V.R., attached to R.N.A.S.
 ELLWOOD, A. A., Major, 4th Lincolnshire Regt., atchd. M.G.C.
 EVENS, J., Sec.-Lieut.
 FERA, Dr. B., Italian Army.
 FISHWICK, P. C., Sec.-Lieut., 3rd Bedfordshire Regt.
 GOLDING, N., Sec.-Lieut.
 GOULD, A. B., Sec.-Lieut., 2nd 4th Leicestershire Regt.
 GODSMARK, R., Sec.-Lieut., City of London Yeomanry.
 HAIGH, G. R., Sec.-Lieut., R.F.C.
 HAGUE, E. A., Sec.-Lieut., 9th Bedfordshire Regt.
 HILL, A. E. F., Lieut., West Riding Regt, atchd. M.G.C.
 HARKER, W. L., Sec.-Lieut., 3rd East Lancashire Regt.
 HARRISON, J., Sec.-Lieut., 11th Lincolnshire Regt.
 HEATON, G. T., Sec.-Lieut., Irish Guards.
 KINGSBURY, E. IVAN, Capt., 6th York and Lancaster Regt.
 LE SUEUR, A. D. C., Capt., Royal Artillery.
 LEIGHTON, N. C., Lieut., A.S.C. (M.T.).
 PALETHORPE, H. N., Lieut., Household Siege Battery.
 PARKER, W., Sec.-Lieut., 13th Hussars.
 PARKES, G. K., Capt., 1st 7th Royal Welsh Fusiliers.
 POTTER, W. A., Lieut.-Colonel, A.S.C. (M.T.).
 POWELL, P. G., Sec.-Lieut., 4th West Yorkshire Regt.
 RICE, P. H., Sec.-Lieut., 51st Sikhs Frontier Force.
 SILVESTER, C. T., Sec.-Lieut., 1st 6th North Staffordshire Regt.
 SIMPKIN, T., Sec.-Lieut., 1st 1st Leicestershire Yeomanry.
 SHAKLETON, J. E., Sec.-Lieut., 7th Leicestershire Regt.
 STAFFORD, C. A. S., Lieut., 2nd 5th Manchester Regt.
 START, W. B., Sec.-Lieut., 2nd Border Regt.
 STIMSON, J. C., Lieut., 1st Sherwood Foresters.
 WALLIS, C., Lieut., Guides Cavalry, India.
 WELD, T. J., Capt., King's African Rifles.
 WHITEHEAD, B. W., Lieut., East African Field Force, Artillery Section.
 YOUNG, M. T., Lieut., 15th Middlesex Regt., atchd. R.F.C.

N.C.O.'s AND PRIVATES.

ALLIS, L. C., Trooper, Lincolnshire Yeomanry.
 ANNIS, H. J., Trooper, Leicestershire Yeomanry.
 BAILES, F., Pte. (Shoeing Smith), 18th Hussars.
 BARBER, H. J., Sergt. (Instructor of Musketry), 2nd 4th Lincolnshire Regt.
 BASFORD, S., Lance-Corpl., Derbyshire Yeomanry.
 BATH, F. H., Pte. (Signaller), 2nd 4th Leicestershire Regt.
 BROOKS, H., Sergt., 1st 1st Lincolnshire Yeomanry.
 BUNTING, A. M., Sergt., 7th Oxford and Bucks L.I.
 BOSWORTH, T. A., Pte., Canadian M.G.C.
 BOLTON, O. M., Pte., 683rd Agric. Company.
 BUNCH, E., A.V.C.
 CLAYTON, G. H., Pte., 3rd 7th Manchester Regt.
 CULLEN, C. N., Air Mechanic, R.N.A.S.
 DERBYSHIRE, A. C., Corpl., A.V.C.
 DODD, J. F., Trooper, 9th Imperial Corps.
 FREEMAN, T. S., Trooper, Leicestershire Yeomanry.
 GIBBS, B. C., Lance-Corpl., Leicestershire Yeomanry.
 GILLESPIE, A. S., Pte., R.A.M.C. (2nd 1st West Lancashire Field Ambulance).
 GREIG, L. C., Trooper, 1st 1st South Notts. Hussars, attached M.G.C.
 HALL, J. F., Sergt., South Notts. Hussars.
 HANDS, E. P., Trooper, 1st 1st Sherwood Rangers.
 HAY, G. E., Trooper, Hants. Yeomanry.
 HEAWOOD, H. W., Trooper, Royal Canadian Dragoons.
 HUBBARD, E., Pte., A.S.C.
 HUNT, W. Corpl., R.F.A.
 HYLAND, C., Corpl., 2nd Life Guards.
 INGRAM, J. T., Driver, 102nd Battery R.F.A.
 KNIGHT, J. R., Pte., Grenadier Guards.
 KNIGHT, S., Sergt., Leicestershire Yeomanry.
 LESTER, J., Pte., Australian Light Infantry.
 LINDLEY, W., Sergt., A.S.C.
 LITTLE, J., Lance-Corpl., 2nd 4th Leicestershire Regt.

LOCKER, A. H., Lance-Corpl., Motor Transport, A.S.C.
 MARSHALL, S. B., Gunner, R.G.A.
 NEAVE, J. W., Rifleman, K.R.R.
 OLDERSHAW, J. W., Pte., 1st North Midland Cyclists' Corps.
 OLDHAM, F. H., 8th Royal Fusiliers.
 OTTEWELL, J. H., Pte., A.S.C. (M.T.).
 OVERIN, F. A., A.B., R.N.V.R.
 PHILLIPS, T., Sergt., Lincolnshire Yeomanry.
 PROCTOR, O., Sergt.
 PRATT, O., Sergt., Cadet, H.A.C.
 RILEY, C. F., Lance-Corpl., 1st 1st South Notts. Hussars.
 ROBERTS, T. H., Sqdn.-Sergt.-Major, Leicestershire Yeomanry.
 ROWLANDS, F., Pte. R.A.M.C.
 SCHOLEY, T. W., Sergt. (Transport), 2nd 7th London Regt.
 SHEPHERD, A. E. M., Pte., R.G.A.
 SHAW, W., Pte., R.F.A.
 SMITH, F., Sergt. Signaller, 15th Sherwood Foresters, Bantam Battalion.
 SMITH, W. PITTOCK, Lance-Corpl., R.A.M.C.
 SPINK, B. E., Lance-Corpl., South Notts. Hussars.
 STEVENS, W. H., Trooper, Essex Yeomanry.
 SWABY, R., Gunner, R.H.A.
 SWABY, A. H., Pte., 4th Batt. D.L.I.
 SPENCER, G. R., Corpl., Cyclist Brigade M. Police.
 THIRLBY, S. L., Pte., Artists' Rifles.
 TOLKIEN, H. A. P. R., Bugler, 16th Royal Warwickshire Regt.
 TURNHILL, L. C., Wireless Telegraphist, Royal Naval Air Service.
 TWIGGE, R., Corpl., Queen's Own Oxfordshire Hussars.
 UPTON, G. H., Corpl. (Motor Dispatch Rider), 5th East Yorkshire Regt.
 UPTON, C. S., 2nd Air Mechanic, R.F.C.
 WIDDINGTON, T. E., Conductor of Transports and Remounts, British East African Expeditionary Force.
 WIFE, H., Sergt., 9th Northumberland Hussars Batt.
 A., Pte., A.S.C. (M.T.).
 A., Pte.
 A. A., Driver, R.F.A.

WHARAM, W. S., Pte., Yorkshire Regt.
 WHEELER, W. G., Pte., R.A.M.C.
 WILLOWS, S., Corpl., Sherwood Rangers.
 WILD, P. R. S., Trooper, 1st Canadian Mounted Rifles.
 WILSON, A. E., Trooper, Sherwood Rangers.
 WOODHEAD, H. E., Corpl., Lincolnshire Yeomanry.
 WOODFIELD, W. R., Pte., Agric. Company.
 WEBSTER, E., Pte., 5th Durham Light Infantry.



Photo, Lafayette.

CAPTAIN ALEXANDER MURRAY, SCOTTISH HORSE.

Killed in action in France, August 14th, 1917.

*Educated at Aberdeen Grammar School and Glasgow University.
 Graduated M.A. and B.Sc. at the latter University.*

*Assistant Lecturer in Agriculture at the Midland Agricultural
 and Dairy College from October, 1912, to September, 1913,
 when he was appointed a County Agricultural Organiser for
 the West of Scotland under the Glasgow and West of Scotland Agricul-
 tural College.*

CAPTAIN ALEXANDER MURRAY.

AN APPRECIATION BY ONE WHO KNEW HIM.

The news of Captain Alexander Murray's death on the field of battle came as a great shock to many of the College residents. To those of us who were contemporaries with Captain Murray it seemed hardly possible that he had been called upon to make the great sacrifice, and all that remained for us was a sweet memory.

For many years I have watched the stream of Students and Staff pass through the portals of our College, and, although it is often considered invidious to single out individuals, yet I must say with all sincerity that no man or woman attracted to his side greater or more sincere friendship at Kingston College than Alexander Murray. How well I remember his free and rugged Celtic nature, and how it was combined with the generous and homely spirit of the Northern Briton.

The drums of war in 1914 called not in vain to that spirit, and in the first ranks of volunteers was found our colleague and friend. From a trooper in the Scottish Horse he rapidly rose to the rank of a commissioner officer. I remember when I last saw him—at the R.A.S.E. Show in 1915, at Nottingham—how disappointed he was because his country had not, up to that time, seen fit to send him to the firing line. We can, all of us, realise how anxious he must have been, and how his eager patriotic spirit thirsted for the opportunity of taking an active part in the defence of our Empire.

Murray lived and died a gentleman, a friend, a noble-hearted son of Britain; our Army, our Country, aye, and the world poorer for the loss of one such as him.

Requiescat a laboribus suis.

H

RIFLE CLUB.

This season the mainstay of the Rifle Club has been the lady members, all of whom quickly became familiar with the use of the rifle. The male students, strange to say, were not nearly so enthusiastic as in former years. All Medals and Certificates were won by ladies.

MEDALS AND CERTIFICATES.

Winner.

Bell Medal	Miss M. Howard.
S.M.R.C. Medal	Miss M. Howard.
Daily Express Medal	Miss F. M. Hextall.
Daily Mail Certificate	Miss M. Howard.
Daily Telegraph Certificate	Miss F. M. Hextall.

NATIONAL ROLL OF MARKSMEN.

The following qualified for entry on the National Roll of Marksmen (Class A):—

Miss F. M. Hextall.

Mr. E. Russell.

The Midland Agricultural and Dairy Student's Association.

1917-18.

Honorary President :

Dr. WILLIAM GOODWIN.

President :

Mr. J. DUNLOP.

Vice-Presidents :

Miss J. MATTHEWS. Mr. C. MERRICKIN.

Hon. Treasurer :

Mr. H. T. CRANFIELD.

Hon. Secretary :

Miss M. G. D. TAYLOR.

Committee :

Misses NUTTING and SMEDLEY.

Messrs. NIX and HODSON.

Librarian :

Miss J. NEEDHAM.

Reporter :

Mr. P. W. BAILEY.

M.A.D.C. Magazine :

EDITOR :—Mr. P. W. BAILEY.

SUB-EDITORS :—Misses BLUNT and NUTTING.

COMMITTEE :—Miss NORTH and Mr. BENSON BROWN.

SUBSCRIBERS.

Allsup, E., Miss	Whittingham Hall, Nr. Preston.
Anderson, R.	The Dairy, Brandsby, Easingwold, Yorks.
Andrews, E. J.	Inkford Brook Farm, Wythall, Alvechurch.
Ashworth, L.	Moorgate Park, Retford.
Ashwood, A., Miss	3, Tattershall Drive, The Park, Nottingham.
Atkinson, M. S., Miss	Alster, Great Missenden, Bucks.
Baddiley, M., Miss	Bridge House, Workshop.
Bagguley, F. M., Miss	12, Derby Road, Loughborough.
Bailey, P. W.	M.A.D.C., Kingston, Derby.
Barber, H. J.	Southfield, Louth, Lincs.
Barker, H. G.	Seagrave Grange, Barrow-on-Soar, Leicestershire.
Basford, S.	Easedale, Burton Road, Derby.
Bath, F. H.	New Swannington, near Whitwick, Leicester.
Beale, J. H.	32, Lumley Road, Redcar, Yorks.
Beard, W., Miss	Scarsdale House, Watson Avenue, Mansfield.
Bell, E. A., Miss	Nubbock Farm, Hexham-on-Tyne, Northumberland.
Bellwood, A.	Mount Pleasant, Kirton Lindsey, Lincs.
Benson-Brown, B.	The Vicarage, Woodhall Spa, Lincs.
Billson, P. G., Miss	98, Regent Road, Leicester.
Bissex, A., Miss	Church Farm, Stratton-on-Fosse, near Bath.
Blunt, J. V.	Breedon-on-the-Hill, near Derby.
Blunt, M., Miss	M.A.D.C., Kingston, Derby.
Bolton, O. M.	88, Mansfield Road, Nottingham.
Bond, J. R.	Kensington Villa, Matlock Bridge.
Bond, K.	65, Rutland Road, Chesterfield.
Booth, E. D.	School House, Bishop's Norton, Lincoln.
Bourne, A. S., Miss	The Co-operative Dairy, Burton-on-Trent.
Bowmer, A. E. M., Mrs.	The Hays, Barrow-on-Soar.
Braithwaite, A., Miss	31, Broad Street, Windermere.
Brierley, D., Miss	Cotfield, Prestwich, Manchester.
Briggs, D.	Forest View, Kirkby Road, Sutton-in-Ashfield.

Brunyee, K. M., Mrs. (née Upton)	Sandbraes, Caistor, Lincs.
Bulstrode, M. E., Mrs. (née Connell)	The Mill House, Slough, Bucks.
Bunch, E. A.	85, Bewsey Road, Warrington.
Bunting, A. N.	Congerstone, Atherstone.
Burgess, R., Mrs.	"Kingswood," Trencham, Farnham.
Burnett, J.	Wye Farm, Rowsley.
Burrows, M., Miss	12, Castle St., Sneinton, Nottingham.
Burton, H. H.	Castle Farm, Torksey, Lincoln.
Carter, N., Miss	Eastfield, Neatherseale, Ashby-de-la-Zouch.
Carnley, K., Miss	Amberdale, Ashover, nr. Chesterfield.
Carter, T. E.	Goulceby, Louth, Lincoln.
Cawkwell, C. A. B.	44, Carisbrook Road, Walthamstow, Essex.
Challands, A. W., Miss	Colston Bassett, Bingham.
Clayton, M. J.	Glenfield, nr. Leicester.
Cook, J. W.	Sand House, Appleby, Doncaster.
Cooper, D., Mrs. (née Tear)	Vet. Surgery, Saxilby, Lincs.
Cranfield, H. T.	M.A.D.C., Kingston, Derby.
Crocker, M. G., Miss	11, College Road, Exeter.
Cullen, C. N.	Burton Joyce, Notts.
Davis, B. F.	2, Vernon Chambers, Southampton Row, London, W.C.
Dawson, E. M., Miss	Yeldersley, Ashbourne, Derby.
Dean, Miss	Mucclestone Wood, Ashley, Market Drayton, Salop.
Derbyshire, A. C.	Curbar House, Newbold Moor, Chesterfield.
Derry, C.	Chestnut Cottage, Old Lenton, Notts.
Dewick, Miss	Dunstan Hill, Kirton Lindsey, Lincs.
Dicks, M., Miss	7, Perlethorpe Avenue, Sneinton, Notts.
Dobbin, C. H.	C.C. Poultry Farm, Hutton, Preston.
Draper, Miss	The Hays, Barrow-on-Soar.
Drifill, C. and T. B.	Appleby, Doncaster.
Duncalfe, L., Mrs. (née Windley)	Colston Bassett, Notts.
Dunlop, J.	M.A.D.C., Kingston, Derby.
Evans, Mrs. (née Shemwell)	Forester's Office, Heath, Chesterfield.
Fairweather, I. K., Miss	Clinton Cottage, Kirklington Road, Southwell, Notts.
Forrington, W.	296, West Parade, Lincoln.
Fishwick, V. C.	69, Goldington Avenue, Bedford.
Flintoff, N., Miss	Carburton Manor, Ollerton, Notts.

Forman, H. G., Miss	c/o F. W. Gilbert, Ltd., Berkeley, Glos.
Fox, G. O.	M.A.D.C., Kingston, Derby.
Freear, K., Miss	Dairy Dept., University College, Reading.
Freeman, G., Miss	The Mill, Ravenstone, Ashby-de-la-Zouch.
Froude, J. A. R.	Knighton Grange, Stoneygate, Leicester.
Furness, J.	Gt. Hucklow, Buxton.
Fyfe, M., Mrs. (née Bailey)	Holgate Farm, Arkendale, Knaresborough.
Gadsby, N., Miss	Lodge Farm, Redhill, Notts.
Gawne, E. M.	The Bungalow, Port St. Mary, Isle of Man.
Gerry, C., Miss	473, Mansfield Road, Nottingham.
Gibbs, B. C.	Highbury, Sileby, nr. Loughborough.
Gibson, W. J. E.	Pashley House, Epworth, Doncaster.
Gillespie, A. S.	57, Parkfield Road, Sefton Park, Liverpool.
Golding, J.	Agricultural Department, University College, Reading.
Goodacre, E., Miss	Bishop's Meadow Farm, Loughboro'.
Goodwin, Wm., Dr.	M.A.D.C., Kingston, Derby.
Gould, A. B.	Knighton Farm, Leicester.
Goulden, M., Miss	Sunnyside, Poynton, Stockport.
Gwyther-Jones, C., Miss	Brook Cottage, Thame, Oxford.
Hacking, T.	33, Bowling Green Street, Leicester.
Hague, E. A.	Fair View, 2, Waterloo Rd., Bedford.
Haigh, G. R.	Lewisham, Bruntcliffe, Leeds.
Hall, A. M., Miss	Clipstone House, Plumtree, Notts.
Hall, D. M., Miss	Clipston, Plumtree, Notts.
Hands, E. P.	Manor Park, Ruddington, Notts.
Harker, W. L.	Wilford, Notts.
Haslam, A. H.	4, Thomson Street, Ardwick, Manchester.
Haslam, Mrs.	4, Thomson Street, Ardwick, Manchester.
Haywood, L., Miss	Nailstone Grange, near Nuneaton.
Hawkins, Miss	Whitegate, Co. Cork, Ireland.
Hayes, G.	Mona Street, Beeston, Notts.
Heaton, G. T.	19, Lenton Road, The Park, Nottingham.
Hedges, B.	Middle Hill, Box, Wilts.
Hempfrey, F. A., Miss	Gotham, Notts.
Hextall, F. M., Miss	Lleweni Hall, Denbigh, N. Wales.
Hill, A. E. F.	Camm's House, Eckington.


Hill, F. E. C., Miss	Fern House, Market Rasen.
Hitchon, D., Miss	Rhyddington, Oswaldtwistle, Accrington.
Hodson, D. H.	The Manse, Coppice Road, Nottingham.
Holdsworth, I. M., Miss...	Sweet Hills Farm, Kirton Lindsey, Lincs.
Hollingsworth, L.	9, Hamilton Road, Burton-on-Trent.
Houghton, A. W.	The Towers, Brereton Avenue, New Cleethorpes.
Howard, E., Miss	Dunham-on-Trent, Newark.
Hubbard, E. P.	Eastleigh, St. John's Rd., Leicester.
Hugill, E. J., Miss	Redgate House Farm, Wolsingham.
Humphreys, R., Miss	24, Victoria Crescent, Cheadle Hulme, Cheshire.
Hunt, Wm.	Restholme, Sheep Turnpike, Matlock.
Hutchinson, H. P.	M.A.D.C., Kingston, Derby.
Ingram, J. T.	Thackerbarn Farm, West Hallam, Derby.
James, M., Mrs. (née Bailey)	Penllwyn, Narbeth, South Wales.
Jaffares, J., Dr.	Kegworth, Derby.
Jessop, J.	Manor Farm, Apley, Wragby, Lincoln.
Johnston, M. R.	c/o Messrs. Cleeve Bros., Lansdowne, Limerick, Ireland.
Jolliffe, R.	93, New Park Street, Devizes.
Kester, M., Miss...	7, Eton Villas, S. Hampstead.
Kidd, E. L., Miss	West Bridge, Enniskillin, Ireland.
Kind, W.	Whetstone Gorse, near Leicester.
King, K., Miss	Bodens Farm, Enford, Pewsey, Wilts.
Kingsbury, E. J.	Stapleford, Notts.
Kirk, F. L.	Kegworth, Derby.
Kirkham, J. W.	The Laurels, Dean's Walk, Glos.
Kitchingman, C.	The Grange, Broxholme, near Lincoln.
Knight, S.	Buckminster, Grantham.
Knight, J. R.	Sunnymead Hds., Bosworth.
Knowles, F.	
Lang, N., Miss	18, Beaumont Street, London, W.
Laws, D., Miss	The Schoolhouse, Gotham, Derby.
Lee, J., Mrs. (née Mather)	Blackwell House, Blackwell, Alfreton.
Levie, A.	M.A.D.C., Kingston, Derby.
Lewis, P. H., Miss	St. Peter's Vicarage, Mountsorrel.
Lindley, W. B.	Holly Dene, Coalville.
Little, M., Miss	Horninghold, Uppingham.

Littler, M., Miss...	8, Appleton Gate, Newark.
Lomax, K., Miss	Turvey House, Holmer, Hereford.
Look, I. M., Miss	Church Farm, Meare, Glastonbury, Somerset.
Limb, A. M., Miss	Old Brampton, Chesterfield.
Maclaren, P.	M.A.D.C., Kingston, Derby.
McNair, I., Miss	Harley House, Bottesford, Notts.
Manners, B., Miss	Wiveton Hall, Cley, Norfolk.
Manning, P., Miss	Melksham, Wilts.
Marriott, J. H., Miss	Studley College, Warwickshire.
Mason, M., Miss	Education Offices, The Castle, Exeter.
Matthews, J.	Carrick-a-Rede, Central Avenue, West Bridgford, Notts.
Matthews, J., Miss	1, Central Avenue, West Bridgford.
May, J. S.	Park House School, Pilsey, Chesterfield.
McCreath, H. M.	Challoch, Newton Stewart, N.B.
McKay, H.	Allotment, Newcastle-on-Tyne.
McNish, I.	27, Station Terrace, Hucknall, Torkard
Mercier, Miss	Royal Victoria Hospital, Belfast.
Merrikin, C.	Crown Hotel, Oakham.
Milburn, T., Dr.	County Offices, Preston.
Miles, W. T. B.	Micklemeadow, Littleover, Derby.
Miller, E., Miss	West: Shield Hill, Morpeth.
Millward, B.	Cold Springs Farm, Buxton.
Mitchell, W.	Brent Knoll, Duffield Road, Derby.
Monks, M. H., Miss	County Offices, Ipswich.
More, W., Miss	Balmoral House, Shaw Lane, Leeds.
Moulds, G. H.	Low Holland, Sturton le Steeple, near Retford.
Muir, M. M. R., Miss	Nethercroft, Ayr.
Neal, I. M., Miss...	Kirby Road, Glenfield, nr. Leicester.
Needham, J., Miss	Chatsley House, Syston, Leicester.
Newbiggin, H. F., Miss	13, George Square, Edinburgh.
Newland, C. E., Miss	The Gables, Rotherfield, Sussex.
Nicholson, Miss	M.A.D.C., Kingston, Derby.
Nix, S.	Barton the Green, Winchmore Hill.
Noble, E., Miss	County Education Office, Stafford.
North, A., Miss	3, Inglewood Terrace, Penrith.
Nuttall, D. K.	New Combe, Broadway, Worcs.
Nutting, K. E., Miss	41, Prospect Road, Moseley, Birmingham.
Oldham, T. H.	Norbury, near Ashbourne.
Overin, F. A.	High Street, Chellaston, Derby.

Palmer, R., Miss	Bradgate Road, Anstey, Leicester.
Palmer, D. B., Miss	Peaslow Farm, Chapel-en-le-Frith.
Parker, G. H.	127, Russell Road, Nottingham.
Parkes, G. R.	County School, Towyn.
Parsonage, John	White Gate Farm, Malpas, Cheshire.
Parter, J. H.	53, Grove Lane, Retford.
Peacock, J. B., Miss	Brook Farm, Buxton.
Pearson, H. J., Miss	Gilston Park Estate Office, Harlow, Essex.
Perkins, R.	Barkby, Leicester.
Pimlott, Miss	The Sycamores, Over Winsford, Cheshire.
Pittock-Smith, A. R., Mrs.	M.A.D.C., Kingston, Derby.
Porter, B.	Tattershall Bridge, Lincoln.
Potter, G.	1, Trafalgar Road, Birkdale, Southport.
Powell, P. J.	Ivanhoe Terrace, Normanton, Derby.
Pritchard, L. E., Miss	Roden House, Wem, Salop.
Prince, H. P.	Marston Park, Marston Montgomery, Derby.
Proctor, O.	Elmdene, Duffield Road, Derby.
Pybus, D., Miss	The Avenue, Driffild, Yorks.
Rayns, F.	The Grammar School, Brewood, Staffs.
Rhodes, G. P., Miss	Donnybrook, Brookside, Chesterfield.
Richardson, M., Miss	West Lodge, Ilkeston.
Riggott, J. B.	Dunston Farm, Newbold, Chesterfield.
Roberts, M., Miss	High St., Bromyard, Herefordshire.
Robinson, D., Miss	34, Lombard Street, Newark.
Robinson, F., Miss	Coppice Farm, Poynton, Stockport.
Rolling, E. A., Miss	Rufford, Ollerton, Notts.
Rothera, E., Miss	Kegworth, Derby.
Rowland, F.	New York, Lincoln.
Russell, E.	M.A.D.C., Kingston, Derby.
Sadler, W.	The Macdonald College, Quebec, Canada.
Saker, D., Miss	Agricultural Education Offices, 5, Graham Rd., Weston-super-Mare.
Satchell, M. H., Miss	Field House, Sileby, Loughborough.
Shackleton, J. E.	Hill Crest, Mill Hill Road, Derby.
Shepherd, A. E.	Park Lane, Sutton Bonington.
Shepherd, H.	Caunton Lodge Farm, Caunton, Newark.
Sims, E., Miss	Bradley Nook, Hulland Ward, Derby.
Skelton, E.	Lodge Hill, Ambergate, Derby.
Slinger, S. T., Miss	Manor Farm, Frampton-on-Severn, Stonehouse, Glos.
Smedley, M. P., Miss	East Bridgford, Notts.

Smith, F.	Angel Inn, Kneesall.
Smith, J.	24, Arboretum Street, Nottingham.
Smith, J.	Burton Moor Farm, Bakewell.
Smithson, Miss	Mattersey, Bawtry, Yorks.
Speakman, C. E., Miss	The Horticultural College, Swanley, Kent.
Spink, B. E.	Walcot, Doncaster.
Start, W. B.	Derby Road, Long Eaton.
Stewart, W. A.	S.E. Agric. College, Wye, Kent.
Stafford, C. A. S.	Hognaston, Ashbourne.
Stafford, J. G. W.	Hognaston, Ashbourne.
Stedeford, L. H.	21, Margaret Street, Hull.
Stephen, J. D.	The Crosslooms, Mollington, Chester.
Stephenson, Miss	The Rectory, Kegworth, Derby.
Stokes, E. E.	418, Woodborough Rd., Nottingham.
Stretton, A., Miss	Kegworth, Derby.
Stubbs, J., Miss	C.C. Dairy School, Hutton, Preston, Lancs.
Sutton, R.	Kirk Lane, Ruddington.
Swaby, A. H.	106, High Street, Scunthorpe.
Swaby, R.	Oswald Farm, Old Frodingham.
Swain, A. S.	Inkersall Green, Brimington, Chesterfield.
Taylor, M. G. D., Miss	M.A.D.C., Kingston.
Taylor, A. M., Miss	Packington Hill, Kegworth.
Taylor, C. H., Miss	Fern Bank, Chapel-en-le-Frith.
Taylor, M. C., Miss	Education Offices, Weston-s.-Mare.
Taylor, M. F., Miss	Cairn Garth, Heads Nook, Carlisle.
Thornley, A., Rev.	Hughenden, Coppice Road, Nottingham.
Titterton, E., Mrs. (née Bonsall)	Lays Farm, Ecton, Wetton, Ash- bourne.
Torr, G., Miss	The Holmes Farm, Epworth, via Doncaster.
Trevor, S.	Moat House Farm, Blean, Canterbury.
Trussell, H. J.	Prestop Park, Ashby-de-la-Zouch.
Tulloch, I. W., Mrs. (née Strachan)	25, Bellevue Crescent, Edinburgh.
Turnill, L. C.	Wittering, Wansford, Northants.
Turpin, E. T., Miss	68, Henry Road, West Bridgford.
Twigge, R.	Steeple Grange, Wirksworth.
Vallance, M., Miss	Osleton Hill, Worksop.
Vallance, W. D.	Medway Dairy, Gillingham, Kent.
Vernon, M. A., Miss	Ladysmith Farm, Hoar Cross, Burton-on-Trent, Staffs.
Wagstaff, H.	Colston Bassett, Bingham, Notts.
Wagstaffe, E., Miss	Farleigh Court, Whyteleafe, Surrey.

Wakerley, F.	Agric. Organiser, Education Office, Grantham.
Walker, A. R.	G.N. Station House, Linby, Notts.
Wallace, J. C.	
Wallace, J. O.	11a, Park Avenue, Whitley Bay.
Wallis, C.	Acacia Cottage, Eastwood, Notts.
Warter, A.	Minsterley, Shrewsbury, Salop.
Weatherall, G. M., Miss	Searthingmoor Farm, Weston, Newark.
Webb, Ethel, Miss	Bishopswood, Brewood, Staffs.
Whitehead, V.	87, Forest Road, Nottingham.
Whitworth, T. L.	Station Road, Healing, Lines.
Wild, M., Miss	Tollerton, Notts.
Wilkinson, H.	Gibsmere, Bleasby, Notts.
Willett, L., Miss	Snibstone House, Ashby-de-la-Zouch.
Williams, W. L.	
Willows, S.	Knaith Park, Gainsborough.
Wilson, A. R.	6, Quorn Avenue, Melton Mowbray.
Windley, Jean, Miss	Colston Bassett, Notts.
Winters, S. E., Miss	Falcon Lodge, Sutton Coldfield.
Wood, R. K., Mrs. (née Coventry)	15, Brook Road, Walton, Liverpool.
Wood, T., Miss	The Poplars, Epperston, Notts.
Woodall, W.	"The Hawthornes," Westhouses, Alfreton.
Woodhead, H. E.	Marsh Grove, Friskney, Lines.
Woolley, J. H.	Glazebury House, 155, Duncan Road, Aylestone, Leicester.
Wright, M., Miss	Willingham, Market Rasen.
Young, M. T.	52, Highbury Park, London, N.



CORVUSINE D.G.

The Non-poisonous liquid Seed Dressing
HELPS TO DEFEAT
The Submarine Menace

It is the Farmers' most effective weapon
against the enemies of a Bountiful Harvest:—

ROOKS, PHEASANTS, WOOD-PIGEONS,
OTHER BIRDS AND VERMIN.

PREVENTS PREMATURE GROUND ROT. IS A SMUT DRESSING.

Costs only a few pence per acre and saves
pounds, increases crops by decreasing loss,
and produces high percentage of germination,
and strong seedling plants.

THE SAFEST AND MOST EFFECTIVE SEED DRESSING ON THE MARKET.



AVOID INJURIOUS IMITATIONS.

PRE-WAR PRICES. NO ALTERATION.

**OF ALL SEEDSMEN, CHEMISTS,
& IRONMONGERS EVERYWHERE.**

IF ANY DIFFICULTY in obtaining, write direct to
manufacturers, giving name and address of nearest Seeds-
men, Chemist, and Ironmongers.

HAWKER & BOTWOOD, LTD.,
59 Mark Lane, London, E.C. 3.

Grow Bigger Crops

**As by making Great Britain
A Self-supporting Nation,**

**British Farmers are Extinguishing
GERMANY'S LAST HOPE,**

(Viz.: Starvation through ruthless submarine warfare.)

SOW FOR THE BIGGEST CROPS

Gartons New and
Regenerated **Breeds**
of Agricultural Seeds.

**The Heaviest Cropping in Cultivation.
The Most Profitable in Cultivation.**

The use of these during the past 30 years has, we claim, helped considerably to increase the yields of the Grain, Clover, and Root Crops of Great Britain and her Colonies.

Catalogues post free on application to

GARTONS (Limited)