

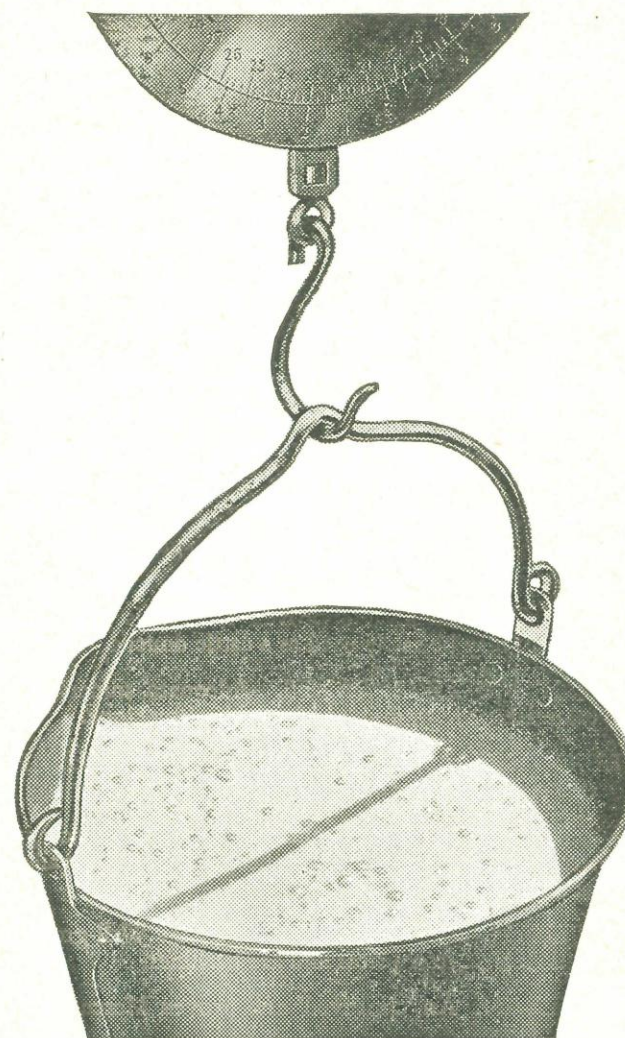
**NOTTINGHAM  
UNIVERSITY**

**SCHOOL OF AGRICULTURE**

**AGRIMAG**

**1949**





The proof of the feeding is in the pail . . . .  
Regular recording provides the real test of the feed  
you give your dairy cows. It's a test which  
shows weighty arguments in favour of feeding

**Silcocks**

R. SILCOCK & SONS LTD · STANLEY HALL · EDMUND STREET · LIVERPOOL



## Farming Specialities

**FEVER DRINK.** For all colds and chills, and other feverish conditions in all farm animals.

**UDSAL.** For healing and preventing cracked and sore teats which are a potent source of Mastitis.

**COD LIVER OIL.** For improving the quality of food and resistance to infection. Supplies the sunshine vitamins.

**TONIC AND CORDIAL DRENCH.** For toning up the nervous and muscular systems, and to get stock back on their food.

**SUPERSAN.** The ideal 'approved' farm antiseptic. Non-irritant, may be safely used as a cattle douche.

**MINDIF MINERAL SALTS.** Adequate minerals are essential for high milk yields and healthy stock.

**CLEANSING AND EVACUANT DRENCH.** For safe cleansing after calving.

**PHENOSAN.** Brand of phenothiazine. The accepted treatment for roundworms in sheep and cattle. Available as a drench or tablet.

**SOAPLESS SHAMPOO FOR CATTLE.** Well-groomed cattle fetch better prices and are healthier.

**HARVESAN.** An 'approved' and proven Mercurial Dry Seed Dressing.

OBTAINABLE  
ONLY FROM

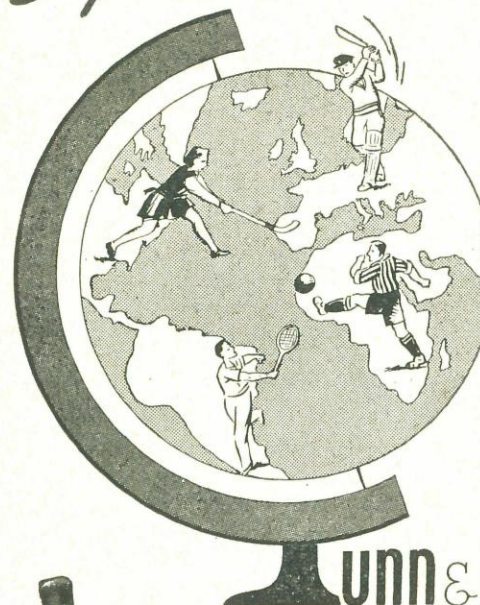
*Boots*

THE FARMER'S  
CHEMISTS

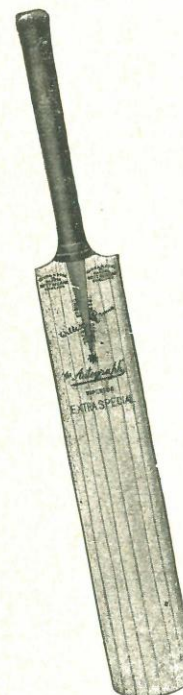
BB535-261

## Supreme in the World of Sport

for over  
**60**  
Years!



**Gunn & Moore**  
Hand-made SPORTS GOODS



The makers of the world famous William Gunn Cricket Bats, also have a high reputation for sports goods and accessories for every popular summer and winter game. Inspect Gunn & Moore products at your local Sports Dealers, or write for price lists direct to the makers.

*We are Agents  
for Standard Football Goals,  
and Notts Red Marl, the finest  
top dressing for turf. Details  
and prices on request. Any  
make of Sports Goods expertly  
repaired.*

**GUNN & MOORE LIMITED**  
CARRINGTON STREET · NOTTINGHAM

Established 1885



THERE'S ONLY  
**ONE**  
Standard  
of Quality

FOR  
*Gartons*

AND THAT IS  
**The Highest**

Agricultural Seed Experts  
and Plant Breeders  
WARRINGTON

## AGRIMAG

JUNE

1949.



Editor : T. M. OSBORNE.

### STUDENTS' ASSOCIATION OFFICERS :

<i>Honorary President :</i>	THE VICE-CHANCELLOR.
<i>Chairman of the Faculty :</i>	MR. M. R. ADAMS.
<i>Vice-Chairman :</i>	MISS H. P. LEGGETT.
<i>Secretary :</i>	MR. C. D. HENDEN.
<i>Hon. Treasurer :</i>	The Registrar, MR. H. PICKBOURNE
<i>Student Treasurer :</i>	MR. C. R. JACOBS.



## CONTENTS.

Frontispiece	5
Contents	6
Editorial	7
Director's Review	8
Photograph—"Derwentwater"	10
Breckland	11
"Reprieve"	12
A Thesis on the Nationalization of Homo Sapiens.	13
I Remember	14
Diary of a Scallywag	15
Cartoon	17
Whither Education ?	18
"To a Cabbage"	19
"—and a Buttercup"	19
Appeal from the Alma Mater	19
The Play	21
The Variety	22
Debates and Lectures Committee	23
The Joint Common Room Committee	25
The Arts Society	25
The Student Christian Movement	26
Rugger Club	26
Rugger Club Photograph	28
Soccer Club	29
Soccer Club Photograph	30
Men's Hockey Club	31
Men's Hockey Club photograph	32
Womens' Hockey Club	33
Table Tennis Club	33
Womens' Hockey Club 1st & 2nd XI photographs.	34, 35
Billiards Club	36
Athletic Sports Report and Results	36
Mens' Tennis Club	39
Women's Tennis Club	40
Mens' Tennis Club photograph.	41
Womens' Tennis Club photograph	42
Cricket Club	43
Cricket Club photograph	45
M.A.C.O.S.A. News	46
Addresses of Present Students.	67

## EDITORIAL.

Someone once said that a country gets the Government it deserves and the same may be said of the School of Agriculture with regard to its annual magazine. Sometimes we wonder if the School does not deserve a better Magazine than it gets and we are inclined to believe it does. We are also mindful of the fact that our magazine is not read solely within the College at Sutton Bonington ; several hundred copies are distributed annually to ex-students and others throughout this and other countries. We wonder if they, too, get the magazine they deserve.

Again, we may apply the principle to the School of Agriculture in connection with its other activities—its Variety, its Play, its discussion Society and all the other Societies, which this year and every year in the past, have done so much to entertain us and stimulate our interest. The same test may also be applied to our Sports teams, which have done so much to enhance our reputation beyond our gates. In all these activities of mind and body, we have achieved the high standards and satisfying results we have deserved—deserved by our enthusiasm, brains and hard work. It amazes us to think how much time and energy many of those among us have been public-spirited enough to expend on such activities.

Imagine, if you will, therefore, how dismayed must be the distraught Magazine Committee, when it realises its appeals for copy are falling on deaf, unheeding ears. People will gladly spend evening after evening at rehearsals or endanger life and limb in a game of hockey or rugger, but to sit down for an hour or two and write something interesting for the magazine is apparently asking too much. Even bribery has had little effect. When the Committee begins to scout for material, the hand that so deftly wields a hockey stick is suddenly stricken with paralysis; the humourists suffer severe mental depression; the brains that could so ably prick a faulty argument in debate lose their keen edge; the theorists subside and the story-tellers are deserted by their Muse.

We do, however, prostrate ourselves in gratitude before those who heeded our appeals. This diatribe is not aimed at their heads, for without them we would have been unable to publish a magazine for all the rest to criticise.



## THE DIRECTOR'S REVIEW.

One has been tempted to think sometimes that there must be an end one day to the recording of progress, but the character of the changes which belong to our development as a School of Agriculture suggest that we have a long journey before realising the fulfilment of all our hopes and aspirations. Of course, the outstanding event of the year has been the final attainment of University status, in which we have been very proud to share. The local rejoicings in this event have given great satisfaction to those who have worked so hard for the creation of a University of Nottingham. All of us who are connected in any way with this great institution are conscious of the new and wider responsibilities which we carry.

The various developments which are taking place at Sutton Bonington are stamped already with the marks which are in keeping with the dignity of a well-established and distinguished University School of Agriculture. Outstanding amongst these is a new library. The old dining hall which was so beloved to many old "Midland" students has been adapted in a splendid manner to serve new and wider needs. The space now available is just over three times as great as that in the former library, and one of the most pleasing features is the dignity of the window that was presented some years ago by the members of the Old Kingstonian Association with the coat of arms of the Midland Agricultural College. This remains as a pleasing reminder of the past, just as it is a token of the regard which so many former students share for the place.

This same good will has also been shown in the response to the appeal launched earlier in the present year by the Old Students' Association for funds to provide some fitting commemoration to those who sacrificed their lives in Hitler's war. Over £360 has been sent in and it is hoped to provide some worthy entrance gates to the School of Agriculture as a memorial. Already the entrance drive to the main building has been widened and it is hoped that the entire scheme will be completed before next year.

The facilities for meals at the School of Agriculture have been improved by the erection of a new refectory. This hardly qualifies yet to be known as a dining hall, since it is lacking in

some of the refinements and furnishings which we hope to complete when adequate finances make this possible. By contrast with the former facilities, its large size robs it of a certain amount of homeliness, but the abundance of elbow room which now exists is something which must be appreciated after the cramped conditions which have obtained for so many years.

Two pairs of new cottages have also been completed during the year and we hope to erect a similar number in the coming session. We have a good many odds and ends to tidy up in our immediate development programme, such as the expansion of accommodation in the Joint Common Room. This centre of student life has proved to be very successful in meeting the needs of the student community, but it is only right that the facilities should be widened by the addition of adequate space for indoor games and a committee room. The business side of the organisation of student societies is not an unimportant feature of life in the School of Agriculture to-day.

Perhaps the most important proposal in our development plans concerns the creation of a new department in the School of Agriculture which will combine together the agricultural sciences. A chair is to be established in Agricultural Chemistry and the future build-up of the various applied sciences will be towards the establishment of independent departments when these merit this particular status. This programme involves also the building of laboratories on a new site, where adequate opportunity can be given for research and other essential requirements.

The life of the School of Agriculture during the year has been both active and healthy. I would like to congratulate the various sports teams on their notable achievements. Association football was resurrected with good results after most of us had begun to despair of ever seeing it again at Sutton Bonington. A good spirit has been shown throughout the session in all our activities and this is very vital to the well-being of a community that is 75 per cent residential.

H. G. ROBINSON.

22nd June, 1949.





Derwentwater.

## BRECKLAND.

There's likewise a wind on the heath ;  
Life is very sweet, brother.

How true these lines of George Borrow ring clear in the ears of a true lover of Breckland, that sparsely populated area situated on the border of Norfolk and Suffolk and stretching its gentle beauty over hundreds of acres around Thetford. Breckland, with its vast expanse of heathland, has an unsurpassed natural charm which sets the mind free to wander over its rough, undulating areas of meditating tranquillity. One marvels at its vast stretches of heather and bracken, which spring green from the sandy, flint-studded earth. One watches with awe the gentle shimmering of the birches, rustling their silver leaves in the South-west wind, which stirs the air and catches in its flight the smooth, placid waters of the meres, chasing a laughing ripple across their mirrored surface.

One who knows Breckland, sees there year after year a permanency of feature, a constancy of character which permeates his inmost thoughts, begetting a lasting love for the beauty and quietness of this countryside. It is an area which knows no man-made boundaries ; an area as free and boundless as the thoughts of one who drinks deep of its unspoiled sights and sounds. Its brooding dignity enchants all lovers of tranquillity and peace, whether it be in Spring, when the bitter winds cut mercilessly across its dull brown slopes ; in Summer, soft green with the delicate foliage of the heather shoots and bracken fronds ; in Autumn, richly golden, or even in Winter, standing bare and defiant beneath tumultuous skies.

Here, as perhaps nowhere else in the whole of this country, one can find bird life at its best. Nesting undisturbed, many rare visitors bring up their families before once again migrating to other lands. The most common frequenter of this sandy waste is the lapwing, wheeling and diving overhead, screaming out his plaintive cry, like a lonely, wandering spirit, while below forages the all-too-common rabbit, whose labyrinthine warrens twist and turn beneath the bracken roots.

History records that the rabbit was once a valued creature of this area and even as late as 1813 two men were convicted at Thetford, one to transportation for seven years and one to two years imprisonment, for removing a rabbit from a trap, the property of Thomas Robertson. Even today, the rabbits, although no longer protected, are still numerous and their burrows are the plague of large areas. Years ago rabbit catching or "warrening" was the main occupation of the district but now one no longer sees the horse and cart, laden with ferret boxes, nets and digging spades and followed by rough-coated, slink-



eyed lurchers. As a monument to this once important activity, however, there is the furrier's factory at Brandon, which still processes rabbit skins.

Today, across the face of Breckland, a great change is taking place and little by little, it is beginning to lose its long-cherished charm. Already many thousands of acres of this poor sandy land have been taken over by the Forestry Commission. There now abound vast areas of dark, stately conifers, standing in orderly ranks and terraced on the gentle slopes, steadfast and erect like the conquerors of a once barren area, the advance cohorts of commerce and prosperity. The planting on a huge area, now known as Thetford Chase, was begun in 1921. Gradually, imperceptibly, it has crept over 43,000 acres and presumably it will invade yet further and deeper.

Forests, with their neat, regimented sections, each traversed by their five roads and cuttings, are not the only invaders, for the plough has burst its way deep into the tangle of bracken and heather. The tractor has stumbled clumsily from one rabbit hole to another across the sandy wastes, churning up the chalky subsoil. Pioneer crops of lucerne and cocksfoot have been sown to combat wind erosion and in an endeavour to give the land a new lease of fertility. Slowly, more and more acres have succumbed to the demands of this hungry, mechanised era.

It is with a tinge of regret that one who loves these peaceful areas can only stand and watch them recede step by step in the face of urgent national need. The sense of boundless freedom of a few years ago seems to have gone. One is half conscious of a feeling of restriction, both mentally and physically. No longer does the mind wander as free and solitary as the clouds overhead, when before one's eyes there stands evidence of a cruel desecration of these areas, where once there was "likewise a wind on the heath" and life was sweet.

N.F.C.

### REPRIEVE.

I was to die tomorrow; to go my way  
Jerked out of life upon a filthy rope,  
Bundled into eternity with a curse;  
But now—O, Courage, brothers! Here is hope:  
I am to die, not in a moment's space  
Of sudden agony; take heart of grace;  
But in a stagnant living death that drags  
From day to day, from year to weary year,  
Picking my heart out with the oakum shreds  
Until at last it withers, waste and sere.

They grant you freedom after twenty years—  
Freedom to draw again a living breath  
When you've forgotten how to live, outside  
The clutching strangle-hold of prison-death.  
To make your way alone, they give you leave—  
Shunned and unwanted; shaken heart, why grieve?  
Think of the joys of life: reprieve, reprieve!  
C.S.

### A THESIS ON THE NATIONALIZATION OF HOMO SAPIENS.

Having nationalized transport and coal, it seems strange that our Government should fail to realize the importance and necessity for the nationalization of the species *Homo Sapiens*, for there is a crying need to put an end to wasteful and hazardous breeding and production of uneconomic individuals, and to put the whole system on an organised and efficient basis.

It is to this problem that I have, in recent years, applied myself, and have at length come upon a satisfactory policy.

Three types of women are required, all of whom are stupid, for the works and pleasures of this world:—

**Group A** :—Pretty, slender, dumb creatures for stage stars, debutantes, etc.

**Group B** :—Large, plain, muscular women—the chārs, cleaners and cookes.

**Group C** :—Nondescript types suited for the trials and tribulations of domesticity.

Similarly, three types of men are required:—

**Group A** :—Handsome, intelligent men for spivs, film stars, middlemen and professors.

**Group B** :—Large, muscular men suitable for agriculturalists, navvies and timber merchants.

**Group C** :—Nondescript types of sedentary workers—the tractor, bus and train drivers and clerks.

In both cases only group C breed. By this means a balance can be maintained in numbers between these groups, as follows:—

If A is equivalent to Group A members  
and B is equivalent to Group B members,

Then Group C will be a heterozygous group combining the qualities of Groups A and B.

Thus AB x AB according to Mendel gives the following three groups in the ratio of 1:2:1.

AA	AB	AB	BB
Homozygous		Heterozygous	Homozygous
Group A		Group C	Group B



I have based my classification on the positioning of the various significant genes on the sex chromosomes; viz:—

If T is equivalent to the gene for tall and handsome.

If F " " " " fat and ugly.

If I " " " " intelligence and is inseparably linked with T.

S is equivalent to a gene for stupidity and is dominant to

I. S is sex-linked to the female characters.

Then **Group A** has the following genetic make up:—

**Males** T.T. I.I. giving the tall handsome intelligent men—  
'new-look' professors, spivs, etc.

**Females** T.T.I.I.+S giving the slim stupid women.

**Group B.**

**Males** F.F. giving the muscular navvies, agriculturalists and advisory officers.

**Females** F.F.+S—the 'duck-built' charwomen, cooks and assistant cooks.

**Group C.**

**Males** T.I.F. The nondescript sedentary workers.

**Females** T.I.F.+S Homely maternal types.

It is noticeable that the proportions of employment will have changed considerably with the new scheme, and that the sedentary workers exceed the muscular persons in numbers, though not, perhaps, in weight, in the ratio of 2:1, but having regard to the enormous increase in bureaucracy I feel that even this proportion may be too low. No doubt many of the charwomen will be totally employed making tea.

It only remains for Haagedoorn or some other geneticist to do careful breeding work along the lines of my theories and the troubles of the world will be at an end. The Russians have been working on this problem for many years.

There is a possibility that parthenogenesis may supplant my ideas on the organisation of *Homo Sapiens*. As Lancelot Hogben has said, "From what we know of other animals it is probable that mammals produced by parthenogenesis would always be female..... Perhaps humanity may eventually decide that maleness is an unnecessary complication of Agriculture, an obstacle to the control of population growth and a menace to the moral well-being of one half of the human race".

J.P.

## I REMEMBER.

Dimly now, comes back the memory of those hectic days in 1940 over a Channel that sparkled in the August sun—with what relief we climbed out of the aircraft on our return. Blurred too, comes the recollection of the following Autumn and Winter,

passed in a hospital ward, while fractured bones slowly joined and strengthened, and nerves and flesh repaired under Nature's healing hand.

It was well into the following year before the throbbing roar of engines became a matter of personal moment. Thoughts of those droning, numbing hours spent over a darkened Continent, the brilliant nightmare excitement of the target area and the flight westward from the rising sun are veiled by the happier memory of the beauty of the Baltic, bathed in moonlight, its many islands outlined against the dark ripple of the sea.

The third year brought its personal bitterness. It was a prolonged fight against overwhelming odds above the Dutch countryside. Finally—an incident coloured by the sight and sound of bursting cannon shells, the blood of comrades and the uncontrollable dive towards a beach that grew and filled the sight and brain, ending in a blinding light.

There were no friendly hands to minister and soothe but Nature's course was just as sure in a German lazarett in Holland as in that English hospital.

The mending process was completed in Germany, in a well-guarded infirmary, within reasonable distance of the Swiss frontier. With returning strength, the desire to escape manifested itself in a carefully prepared plan. Stage by stage, all obstacles were cleared, but at the last minute, with the freedom of the wooded hills only a yard away, the sound of approaching footsteps prompted a hasty retreat through a door bearing a notice, which would surely preclude the possibility of entry by a male. Two cubicles lay within. Alas, the one chosen possessed no bolt and hard upon the realisation came the purposeful intrusion of a German nurse.

Memory's blush draws its shade over the swift and ignominious return under guard across the courtyard to the ward at the top of the hospital.

The next day's sun watched an escorted prisoner, whose only luggage was a heavy heart, begin his two-day journey to the huts and barbed wire of a prison camp, which was to constitute his material world for three long years.

C. D. H.

## DIARY OF A SCALLYWAG.

To the hockey player, there is no greater pleasure than to crown a good season with an enjoyable festival, and for those of us, who at Lowestoft during the Easter Vac., were taking part in a hockey festival for the first time, the twelve months separating us from our next visit to Lowestoft cannot pass too quickly.



The University was well represented in the Scallywags XI, playing in University colours and including the following school of Agriculture personalities:—"Stretch" (alias "King") Coulthurst, Mike Sutton, Tim Harris, John Hawke, Andy Sherlock and Spike Smith.

After a ceremonial bully-off by C. E. Knowles, our manager, and the Sheriff of Lowestoft, we played our first match against Lowestoft Town. We did well to hold them to a draw until the second half, during which they scored the winning goal from a short corner. After lunch, to enable each member of the party to play at least five games, the necessary team change was made, and indeed the break was very welcome, as we were playing on hard pitches in brilliant sunshine, against teams which demanded the very best from every member of the team.

In the afternoon we gained a one goal lead over Bourne Herewardians and held on to it until the final whistle. That evening we sampled some of the local brew and found it most stimulating; we also established ourselves as undisputed habit kings of the local putting green, where Pat Leggett's habit of holing-out in one became quite a common occurrence. Pat, by the way, was already firmly established as our mascot, official photographer and guardian of kit while we did battle on the well-kept turf. Judging by the injured, dead and dying Scallywags observed after each match, "battle" is the word.

Saturday was our bad day. We lost both matches—in the morning to Emmanuel College, Cambridge, who beat us two—nil, and after lunch to the Vacationals, who rattled the boards twice to our once in a tough game. However, we were still fit (after suitable refreshment) to attend the official Festival Dance in our hotel that evening and in our repertoire, we included the University yell, which permanently shattered the superior look on the head-waiter's face for the rest of our stay.

Sunday was welcomed as a respite from the strenuous exertions of hockey and after a lazy morning, we were taken for a ride by charabanc to see the Broads. All we got for our four shillings was a supreme view of Yarmouth gas works and a visit to a small lake at the back of beyond.

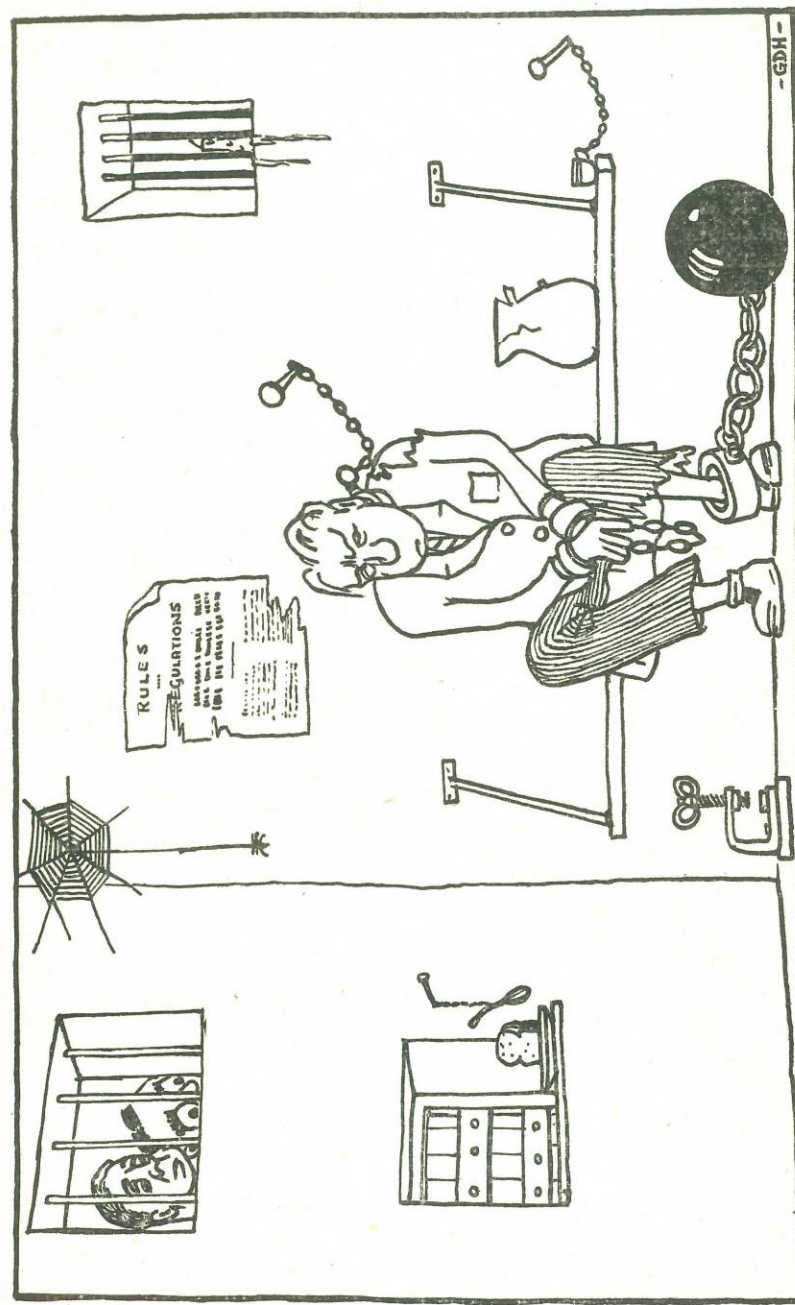
The foreshore was graced by a small pub called "The Eels Foot", as insignificant as its name suggests.

The next day was our day. We scored nine goals in the two matches, beating Norwich Old Boys three—one and Waveney Valley six—two.

In concluding, mention must be made of Andy Sherlock's inspired goal-keeping and the polished play of our team mates from Nottingham University.

I am sure all Scallywags will join me in saying: "Roll on next Easter."

J. B. S.



"—and then he said: 'Personally, Professor, I think Shortthorns are on their way out.'"



### WHITHER EDUCATION ?

"What is this life, if, full of care,  
We have no time to stand and stare?"

The ever-increasing pressure of new technical knowledge, and the absorption of this advance into the syllabuses of Degree students, has created a situation where a decision is now required on the position of the science student in the modern university.

It is inherent in the scientific method that emotion should not colour the critical examination of information derived from research, and that human whims and fancies be eliminated in the search for truth. Yet the man of science is in need of the humanising influence of the "Arts". The painful inability to express himself is apparent; still greater is his need for guidance on the purpose of this life.

The value of a philosophical background is great, but can be attained only by long study and reflection. Such a background may be provided most easily by the University, since it is here that the works of the great figures of the past—the thinkers, composers, artists, poets, playwrights and novelists—are most easily accessible. Guidance in the study of these classics, in themselves but a small fraction of the thoughts of these exceptional men, is necessary because of the varied modes of expression in which they have sought to convey their message to others.

The time has come to decide whether the rigorous study of technical subjects in the University is compatible with the higher aims of University life. There seems to be no reason why the arduous courses taken by many science students, which unite theory with practice and give a thorough training for specific jobs, should not be taken outside the University. On the other hand, there is a strong case for university training in the principles of science, where the minimum application to practice is attempted. It should then be possible for the student to devote at least a year, unharrassed by syllabus and examination, to discuss with his professors and fellow-students the culture and literature of this and other countries, and to ponder on their more profound aspects.

While it may be true that increasing specialisation is essential for raising the standard of living of all, it is nevertheless the duty of the individual to cultivate the "whole man". Indeed, it may be doubted if there is any real "progress" towards the human awareness and purpose of life, except through the mind of the individual; for the summit of human knowledge is reached in the mind of a single person, and dies with him.

It is only by the improvement of the human race that true progress can be made and this is surely the duty of the individual, since there is no hope for man unless he advances, widening and extending his eternal search for the meaning of the universe.

J.G.L.

### TO A CABBAGE.

One broad strip of sea-green leaves,  
Side-by-side with furrowed earth,  
Glistens in the Autumn sunlight.  
By mid-morn the frost disperses.  
Now the leaves, so broad yet crinkled,  
Hold clear drops of icy water,  
Rainbow colours in each sphere.

Then, cabbage, you were beautiful.  
Now we must read and we must learn  
The area of ground you need,  
Your seed-rate and your structural law,  
Feeding value, soil requirements,  
Cultivations and rotations,  
Your family name, your limitations.  
Cabbage—now you're just a bore.

R.J.P.

### —AND TO A BUTTERCUP.

Ranunculus Repens  
Deepens  
The thought  
That we ought  
To see  
With glee  
On looking it up—  
It's a buttercup!

J. H.

### APPEAL FROM THE ALMA MATER.

In the eighteenth and nineteenth centuries horticulture was a flourishing art, finding full expression in the gardens of the stately homes of Britain. A great range of plants was grown in the glasshouses, ornamental grounds, kitchen gardens and orchards under the guidance of head gardeners (mostly dour Scots) who were great craftsmen as well as stern disciplinarians.

These great private gardens turned out superb craftsmen because of the traditional system of training. Boys, youths and young men, usually housed in a bothy where living was cheap if spartan, were moved from department to department by the head gardener and, when partly trained, were passed on from one garden to another to gain further experience.

Hard work, long hours and low wages were the order of the day, with few creature comforts for the working staff.

By the time a man reached his middle twenties he had often worked in four or five famous gardens, in various departments



and in positions of graded responsibility, and began to be an all-round horticulturist with a great store of practical knowledge and experience.

Head gardeners of those days took their training responsibilities most seriously, passing on knowledge of their craft to promising young men who often moved to another garden just as they were becoming most useful. But since other head gardeners did the same they all ultimately reaped the benefit of the training system which engendered a great freemasonry amongst the gardening fraternity.

Two world wars, several depressions and crushing taxation have shattered the great hereditary fortunes on which private gardens depended. A handful of gardeners now struggle where formerly there were scores, and many gardens have disappeared or are but shadows of their former glories.

It is hard to see much fortune in private gardening as a vocation. Head gardeners, preoccupied with trying to manage with insufficient labour, or "making the gardens pay" have little time or opportunity for teaching the finer arts of gardening. As a training ground for the ambitious young gardener the private garden is rapidly losing its value.

Despite this sad decline, horticulture as a whole now plays a greater part in the life of the community than ever before. Public parks add to the amenities of many residential districts, well-kept sports and playing fields and hosts of home-gardens are maintained in increasing numbers whilst commercial horticulture offers fruits and vegetables in abundance and quality such as our grandfathers never knew.

There are horticultural careers for young men and women in many new fields, including professional appointments in research, academic, advisory, educational, and industrial spheres for which a degree in horticulture has become a necessity. Following its long tradition of training students for the horticultural professions, the School of Agriculture, as part of the University of Nottingham, is now one of the only three places in the United Kingdom offering internal degrees in horticulture.

Of necessity, a great deal of time in the three years degree course is devoted to scientific matters, to fit the graduate to understand and cope with the rapidly accumulating mass of technical horticultural knowledge. Students' training in the theory and practice of horticulture itself is not, of course, neglected, but students are required to have had at least one year's good practical experience before coming up to the University in order to ease the pressure on the teaching timetable and to ensure that students have sufficient acquaintance with practical horticulture to enable them to get the most from their course at Sutton Bonington.

Whilst this is an excellent idea in principle, some benefit little from their year's experience because they take employment on holdings where training facilities are poor or inefficient methods are used. The pre-entry practical work is an integral part of the planned curriculum for horticultural degree students whose training, and subsequent worth to the community, may be impaired unless full value is obtained from the year's work.

Unfortunately, the number of first-class growers prepared and able to take the potential students as working hands is relatively small. There must be many former students, who benefitted from their training at the "Midland" and now own or manage up-to-date and efficient holdings. Any who are prepared in turn to help future students by employing them for a season will be rendering a service to the students, the School, and the industry as a whole, in the best traditions of horticultural training. If anyone who can help will get in touch with the School, such opportunities will gladly be brought to the notice of students seeking pre-entry training.

J. P. H.

### THE PLAY.

On February 24th, 25th, and 26th, the School of Agriculture Dramatic Society presented "Winter Sunshine", a comedy in three acts by G. A. Thomas.

The action of the play takes place on the Promenade Deck of the R.M.S. "Southern Cross" outward-bound from London with passengers and mails for Bombay and Australia. The required scenery was something quite unusual for the Society but Mr. C. Jenkins and his assistants must be heartily congratulated for producing a really first class and realistic set. The acting was of the usual high standard. Really outstanding performances were given by Mr. Whitehead as the humorous Col. Powell and by Miss E. Robinson as the middle-aged Sophie Lucas. Special mention must also be made of Mr. C. Henden for his portrayal of the blind crook, Miss P. Petty, who played the difficult part of Anne Simpson, and Miss M. Teesdale as Maggie Jones.

The cast was as follows:—

George (a steward)	....	....	P. A. Spalton.
Sophie Lucas	....	....	E. Robinson.
Athletic Young Woman	....	....	B. Wibberley.
Anne Simpson.	....	....	P. Petty.
Col. Powell	....	....	C. Whitehead.
Maggie Jones	....	....	M. Teesdale.
Katherine Blake	....	....	P. Brooke
John Trench	....	....	C. D. Henden.
Capt. Morton	....	....	J. B. Smith.

Other parts by:— H. J. M. Darby, T. G. Harris, R. W. Lee, J. C. S. Channon, K. M. Trethewey, G. D. Hurst.



The production was, as usual, by Mrs N. McDermott to whom a great deal of credit must be given for the outstanding success of the performances. We would also like to thank Mr. R. B. Shaw who was again in charge of the make-up, and also the Arts Society for the publicity.

The entire proceeds of £30 19 0. were forwarded to The Animal Health Trust.

R. R. H.

### THE VARIETY.

"Agrevue", this year's edition of the School of Agriculture's annual variety show, raised over £12 for charity in the two performances given in the main Hall on 29th and 30th of October.

By long standing custom, the show was produced at short notice, the first rehearsal taking place only seventeen days before the first performance. Nevertheless, thanks to the efforts of all concerned under the able direction of the co-producers Ray Herring and "Spike" Smith, the standard was maintained at last year's high level.

Several of last years successes made a welcome reappearance. Spike Harrows managed to collect another band of talented "Scarecrows", including one who spoke remarkably like Phil Harris and a very attractive little Scarecrowess, who brought the house down with her interpretation of "Buttons and Bows". Mr. Pat Hendon, who sang "None but the Lonely Heart" and "Greensleeves", was not allowed to leave the stage until he had sung "Danny Boy", the song which made him a "variety name" last year.

A sturdy "Breath o' the Highlands" was produced from the pipes of Colin Spence ; Chris Metcalfe and supporting cast gave us a glamorous glimpse of the South Seas in "Sailors Farewell".

The customary songs and sketches reflecting life as we endure it at Sutton Bonington—"Blockout" and "Dairy Maids Lament", and satirically mimicking certain well-known School of Agriculture—personalities. "Ether Extract"—were staged to satisfy our healthy desire to see Authority burlesqued.

The whole show was compered with professional competence by Mr. Henry Barker and there was no lack of "talent" for the chorus.

Thanks are due to the producers, cast, Charlie Jenkins and his back-stage minions for a first-rate show and also to the Technical Committee of Nottingham Students Union for the loan of equipment.

### DEBATES AND LECTURES COMMITTEE.

Under the constitution of the Union, formulated this year, it was decided to merge the Discussion Society and the Horticultural Society into a joint Committee with the above title. It was to be responsible for arranging all external lectures and all internal debates and discussions. Although realising that student activities should be purely cultural and not actuated in any way by mercenary motives, it was suggested at an early meeting that some cultivation of the arts of platform technique might prove more remunerative to many than agronomic tillage, (even though the latter be fully supported by a sound knowledge of principles such as should be acquired during a session or two at the School of Agriculture).

Accordingly it was decided to encourage students to offer a ten minute talk on some subject of their own choice, by way of opening an informal meeting, rather upon the same lines as last years Discussion Circle. Upon those several occasions when such discussions were arranged, attendance was good and certainly critical comment, and often lively discussion, was not lacking. We wish to thank all those who so courageously offered help in this project, realising that it is certainly not easy "to stand up and natter" about something before an audience, which, collectively may well possess a greater assemblage of facts than oneself.

"The Abolition of Blood Sports" and "Pasteurisation" were both informative debates and well leavened with humour. Noting the success of last years Brains Trust it was considered desirable at the risk of being called "copy cat", to organise a "repeat" with much the same set up. A request made to students for questions met with such a broad and interesting response, that the Committee were able to spend a very entertaining evening sorting (and censoring) material considered suitable for presentation to the "brains". One question, of many which we were unfortunately unable to fit in, asked, "Is a little woman a dangerous thing?". Which reminds us by the way that in thanking the members of the trust for their very kind and spirited co-operation, we also do sincerely wish that all their unfulfilled ambitions may find complete and happy realisation within the near future !

A full external programme brought many distinguished people to the Great Hall at Sutton Bonington. Professor Johnson-Wallace gave a noteworthy address on recent research into problems of grassland husbandry. At one point he very aptly compared a grazing cow with a mowing machine. This leads us to consider the possibility of fitting all cows with Cutter-bar dentures, perhaps under the National Health "all-for-nowt" scheme.



An informative account of the work undertaken by his department was presented by Mr. Joseph Edwards, Chief of the M.M.B. Production Division. Student attendance was not large, and it is in this connection rather interesting to note that some weeks later we were given reason to believe that examiners as well as examinees may sometimes find external lectures of value.

Mr. Curtis of the Hides and Allied Trades Improvement Society chose to visit us on an evening, when, failure of the heating system made us fully appreciative of the values of an unspoiled fleece and the discomfort which may be attendant upon letting the warble fly make holes in ones buckskins. Talks on Poultry Breeding and Poultry Diseases given by Mr. Watanabe and Dr. Blount respectively, were well attended by students besides those more immediately concerned with this branch of livestock husbandry.

Although as previously stated, a joint committee had been formed, it was still found most practicable to leave the construction of a Horticultural programme to those two members of the committee elected by that department. To mention but a few of the lectures given under this arrangement; Dr. Montgomery gave a resume of recent work at East Malling and Mr. W. J. C. Lawrence gave an account of the history and development of potting composts. Mr. J. O. Page addressed a meeting on the topic of commercial bulb production. We wish to especially mention an illustrated account given by our own Mr. Hudson, of several aspects of horticulture in New Zealand. Student meetings for discussion of specific horticultural problems were also arranged.

Several programmes of films were shown during the year and we wish to record our sincere appreciation of the kindness shown by those commercial firms who made this possible. We are still hoping that perhaps one day we may possess our own projector! We must also thank Mrs. Brown for her very helpful co-operation at all times.

At the moment of writing we are still anticipating a number of external lectures arranged for the summer term, including visits by Mr. Dunkerley, the Midland Director of the B.B.C., Professor Scott Watson and Dr. Wm. Davies. Thus will be concluded a programme which we sincerely hope has rendered some measure of pleasure and profit to all who have given their kind support.

In closing I wish to personally propose a last vote of thanks of the year to Mr. Alec Calder, our Chairman. He has devoted much time and energy to this little venture and I am sure you will join with me in saying "Thank you Alec".

C.R.C.

## JOINT COMMON ROOM AND SOCIAL COMMITTEE.

Chairman: J. B. Smith. Hon. Sec. R. Cater.  
Committee: Misses P. Mitten, E. Robinson,  
Messrs. R. R. Herring, P. Cartwright.

At the time of going to press another College year is drawing to a close and the J. C. R. committee can look back on a successful session.

A perusal of the minute book for the past few years shows the responsibilities of the Committee have remained much the same this year. We have tried, with limited space and equipment, to provide informal entertainment during the first two terms and with the continued purchase of up-to-date records, the twice-weekly hops have been well attended and popular. During the Summer term, the demands of Botany and other strenuous pastimes have lessened the need for a midweek dance, and they are now held on Saturdays only.

As usual, the end-of-term dances in the Main Hall have been our main task and the one held on December 13th. is worthy of especial mention. Everyone worked exceedingly hard to produce a first rate entertainment. The Loose-box was transformed, the library rivalled it in its attraction and the dancing took place in a Main Hall bedecked with greenery and colourful flowers, crowned with a brilliantly decorated Christmas Tree. Only the hard-worked band were glad when the clock announced the hour of one a.m.

We must, before we close, mention the untimely departure of Miss E. Wilson, who undertook the task of secretary until Christmas. Her place on the Committee was ably taken by Miss E. Robinson, Mr. R. Cater taking over the duties of secretary. Thanks are due to the Horticultural Dept. for help with the floral decorations and to all those who have helped us in so many ways to make our pleasant duties more enjoyable.

J.B.S.

## THE ARTS SOCIETY.

Chairman: John B. Smith. Hon. Sec.: Miss R. Powell.  
Treasurer: P. Limb.

This year the Arts Society has concentrated upon Music. During the Christmas and Spring Terms, several enjoyable gramophone recitals were held in the Joint Common Room, covering a wide variety of music from "The Messiah" to "Okla-homa."

On March 18th, the Student Orchestra and Choir from Nottingham University gave us a delightful performance of orchestral music, part songs and solos, all reaching a very high standard. We hope that they will come again next session.



We are looking forward to hearing a talk from the well-known radio musicians Dobson and Young, who are coming from Manchester on May 19th.

Our artistic activities have mainly been limited to posters for the Dramatic Society. A competition was organised in this sphere, the prize being awarded to Mr. P. Gosden for a very striking poster. The entries were judged by Mr. Martyr and Mrs. McDermott, who gave us some useful criticism. It is hoped that this aspect of art will be more in the foreground during the coming year, the third in the Society's existence.

R. J. P.

### STUDENT CHRISTIAN MOVEMENT.

Hon. President : Prof. H. G. Robinson.  
Chairman : C. J. Black. Hon. Sec. : Miss R. Powell.  
Treasurer : J. Thrussell. Magazine Sec : Miss J. Humberstone.  
First Year Representative : Miss B. Young.

The Student Christian Movement is controlled and organised by students and is a society in which students of any nationality or denomination can freely discuss their beliefs. The one condition of membership is the desire to understand the Christian Faith and to live the Christian life.

During the year we have had several most interesting talks from outside speakers, followed by lively discussions on such subjects as "Science and Religion", "To Hell with Culture", "Life and Learning" and many others.

The customary morning service was held in the Main Hall daily at 8.50. a.m.

R.J.P.

### SCHOOL OF AGRICULTURE RUGBY FOOTBALL CLUB

President : Prof. H. G. Robinson.  
Vice-Presidents : Mr. C. Morgan, Mr. D. Ivins.  
Captain : C. Jenkins. Vice-Captain : G. Stonham.  
Secretary : D. Harrison. Committee : C. Spence, H. Harpham.

In a retrospect of the 1948/49 season one can look back with a certain amount of satisfaction.

Our record of won 17, drawn 1, lost 5 was as good as the previous season, although the team at times seemed to lack thrust and fire and on one or two occasions tended to give in. These faults were probably mainly due to injuries suffered in the three quarter line ; rarely a match was played without some change.

It is not necessary here to discuss each match in turn but two events should not pass without notice. Firstly the double victory against Harper Adams, and secondly the defeat of Leicester University at Sutton Bonington after suffering rather a bad defeat at Leicester. We did not manage to do as well against the University this year as last although we held them almost to the end to a low figure. Late in the second half their better training and greater experience of better class rugby made itself felt and two quick tries increased their score to 13—0.

One of the most gratifying occurrences of the season was the large number of club members, on more than one occasion we managed to raise a second XI and also several full sided practice games were played.

It is difficult to pick out individual players but mention should be made of a few : Charlie Jenkins, our skipper, was on form whenever he played and a large portion of the team's success was due to his efforts. He was unlucky to be out of the game on several occasions due to injuries but his place was ably taken by Gordon Stonham, who also led the forwards. McKerrow at full back soon settled down and was a permanent tower of strength, whilst Crosby and Roberson showed us some good movements and tackling in the three-quarters. Harpham, who this season moved up to scrum-half, helped well to open up the game and was ably partnered by Dixon. In the forwards, Stonham, Spence, Rivett and Adams, were constantly hard workers. Osborne, as hooker proved to be very useful both in the loose and tight scrums. Kicking was shared by Harrison and Marples.

Congratulations go to Ford and Jacobs, who both played regularly for the University, the latter representing the U.A.U. and obtaining his University gold. Also to the following who obtained their club colours : Spence, Stonham, Crosby, Adams and McKerrow.

We should like to thank our vice-presidents for their active interest in the club throughout the season. Thanks also to Reg Donaldson, who, although out of the game due to injury, very ably refereed several of our matches.

Last but not least we should like to thank our supporters who braved the elements to give us much appreciated support. We can only hope that they enjoyed watching the games.

D. W. H.





RUGBY FOOTBALL—1st XV.

T. B. Crosby\* S. E. Mabey J. E. B. Cole H. J. S. Marples M. R. Adams\* J. McKerrow\* J. L. Roberson D. E. Ritson  
A. D. Rivett J. C. Spence\* G. H. Stonham\* C. F. B. Jenkins (*Captain*) D. W. Harrison T. W. Dixon T. M. Osborne.

\*Denotes Colours awarded.

## SOCCER CLUB. 1948-49.

Looking back over the past season, it now seems a long while since the first meeting of all students interested in Soccer was called, to consider the formation of a Club. At that time we had no pitch and no equipment; indeed, our only asset was plenty of enthusiasm. Since then, we have moved far and we now not only have the necessary pitch and equipment but also many more members.

During the first term we played only six games, all away, our ground being unfit for play at that time. It was essentially a period of experiment, with players often playing in different positions from match to match. This system did, however, prove effective in enabling players to be fitted into the teams where they were thought to be most useful.

Possibly the greatest difficulty throughout the whole season was the lack of co-ordination in the forward line and this was never satisfactorily solved. Far too often, passes were not finding their men; bunching was often noticeable and many centres found no one to put them into the net. Occasionally however, some good passing movements developed, increasingly so towards the end of the season.

In the attack, Claxton has done some useful work as centre-forward, playing in almost every game. Wells, at inside-left, always made his presence felt and scored some excellent goals at long range, some from outside the penalty area. The half-back line has undoubtedly been the mainstay of the team, their form invariably deciding the result.

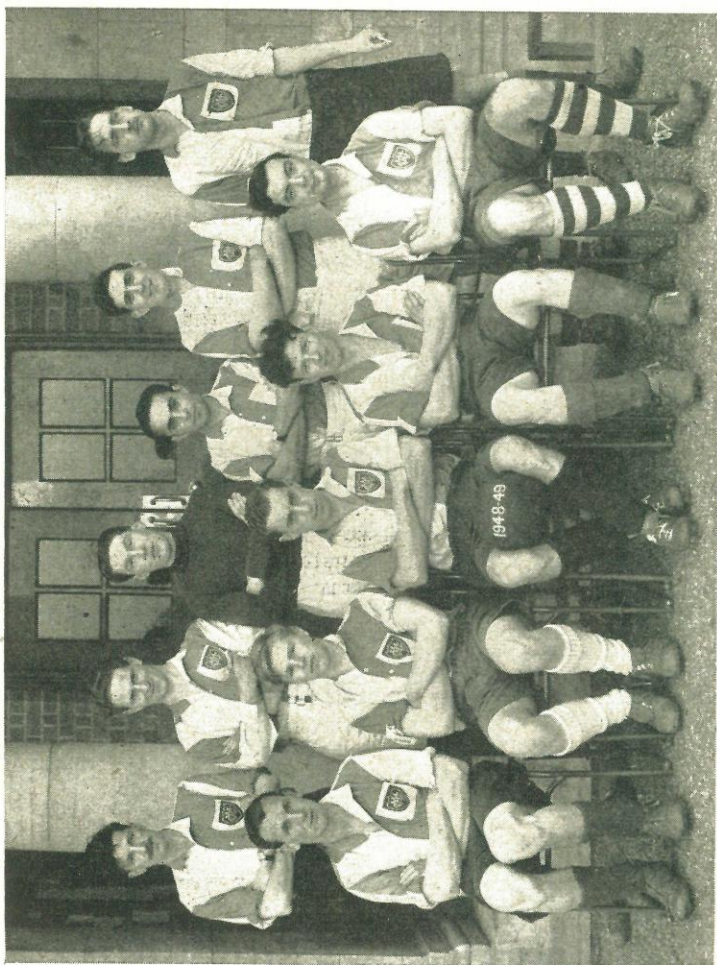
Baker has been a tower of strength at centre-half and has played many great games. Farrington and Davison have played consistently good football and Stapleton, at left-back, has been steady and reliable. Horspool has given some excellent displays as goalkeeper; it is regretted that he was not able to play more often.

Out of 20 matches, we won 9, lost 9 and drew 2. The game that raised most enthusiasm was the one against Harper Adams. We have had to concede the honours to them this year but next year we hope to reverse the position.

As a pointer to next season's team, it may be noted that we lost on both occasions to the Intermediate Agriculturists at Nottingham. We are therefore hoping for a really strong batch of new members next season.

R.D.B.





SOCCER—1st XI.

S. L. Collins S. Farrington\* G. D. Horspool A. Arrar S. C. Stapleton R. D. Bowers  
N. E. Claxton J. B. Nicholson D. A. Davison (*Captain*) J. R. Wells\* L. Cooke.

## MEN'S HOCKEY CLUB, 1948-49.

Hon. President: Mr. R. Wood.

Hon. Vice Presidents: Messrs J. C. Chatterton, W. E. Heath  
R. Martyr.

Captain: H. J. M. Darby. Hon. Sec.: P. C. M. Bashford.  
Committee: J. G. Large, J. Coulthurst, J. Markham.

After last season's record, a stronger fixture list including many of the leading club sides in this area was obtained this season. This factor and the appearance of N.C.H.U.A. umpires at Sutton Bonington, has contributed greatly to the improved standard of hockey here. The club has had an extremely successful season and in viewing the results it might be remembered that out of the club's very small nucleus of players has emerged a team capable of inflicting defeat on established clubs running several sides. This has been achieved as much by the general match-winning spirit as by any individual brilliance. It has undoubtedly been this determination, coupled with speed, which has been the deciding factor in the majority of the games. The results show that out of 28 games played, 17 were won, 6 lost and 5 drawn.

A strong backbone to the team was provided by several of last season's players, including four colours, H. Darby and T. Harris in the halves and P. Bashford and J. Coulthurst in the forwards. The defence worked hard and effectively under the leadership of H. Darby and J. Markham in goal proved to be a great source of strength with his prodigious kicking. The forwards showed themselves to be fast and thrustful when they played as a combination and at times overran the opposition quite decisively.

The first game against the University showed the Team at its best until the closing minutes, when the University scored twice, snatching a victory which seemed almost certain to be ours. An accident to J. Markham and an opposing forward early in the first half led to a fast game, with the club leading 3—1 at half-time. A tiring defence of five men held this nearly to the end and were only beaten by two exceptional goals. In the return encounter at Nottingham, the team was not at its best but lost again only by an odd goal. The games against Ericsson's and Chilwell Garrison were drawn and provided four of the best games of the season. University College, Leicester were beaten 3—1 and 8—0, Ratcliffe College 7—2 and Trent College 2—1.

The club owes its thanks to Mr. Wood for umpiring many of the games, often at short notice, and to Mr. Martyr for the attention given to the pitch, which showed some improvement on last season.

Colours have been awarded to J. Markham, A. Sherlock,  
J. Hawke and M. Sutton. P.C.M.B.





MEN'S HOCKEY—1st XI.

A. G. Sherlock\* J. B. Smith J. H. Hawke\* H. F. Barker R. J. Wellington A. G. Watt J. M. Sutton\*  
J. G. Markham\* J. Coulthurst H. J. M. Darby (Captain) P. C. M. Bashford T. G. Harris.

\* Denotes Colours awarded.

## WOMENS' HOCKEY CLUB. 1948-49.

Hon. President: Miss M. Brindley.  
Hon. Vice-Presidents: Miss R. Beal, Mr. R. G. Wood.  
Captain: Miss D. Hendon, Hon. Sec. Miss E. Robinson.

As a result of the enthusiasm shown at the beginning of the season, it was possible for the first time to form a second XI, which, it is hoped, will be continued next session.

Both teams had a most successful season, the first XI losing only three matches out of the twenty-four played. Owing to their uniformly good standard, the team played increasingly well together as the season progressed.

Despite short notice, the second XI had quite a strong fixture list, playing 14 matches and losing only two. It is hoped that this team will provide a nucleus of experienced players for next season's first XI.

Amongst our keenest opponents were the Staff. Despite threat to life and limb, the honours were even after the two matches played. It is difficult to say who enjoyed the games the most, spectators, umpires or players.

The club wishes to thank all those who helped to umpire their matches and also Daphne Hendon for her splendid contribution to the club both as a player and Captain.

E.R.

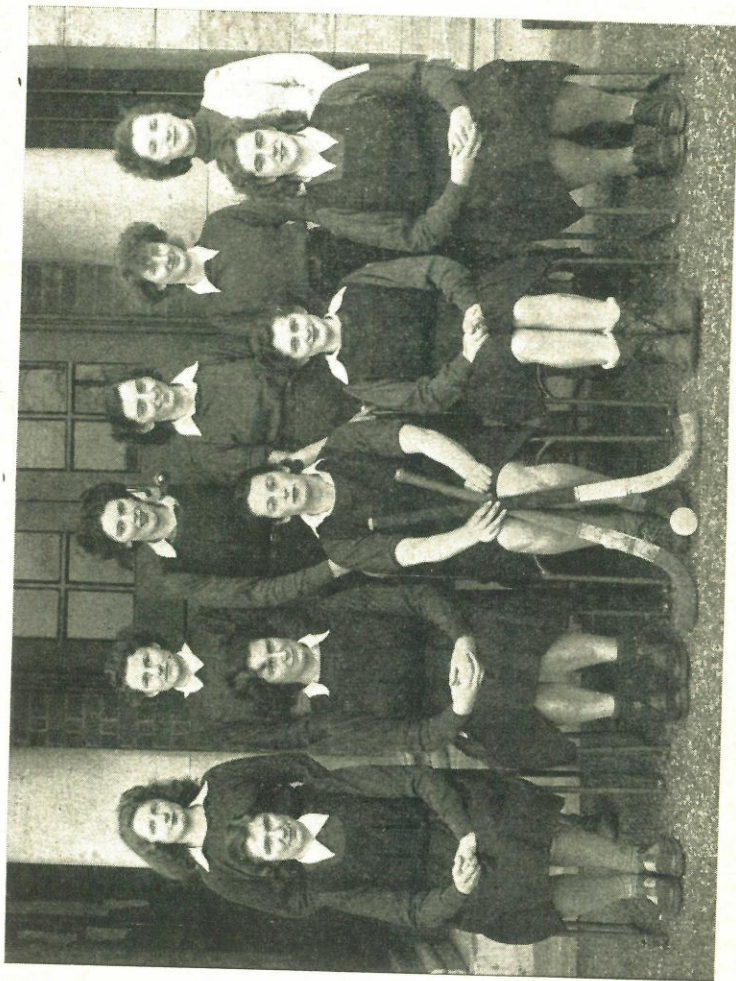
## TABLE TENNIS CLUB.

After an unfortunate lapse of several years, the club was officially reformed at the beginning of the season, when a constitution was drawn up and the following committee elected:—T. Harris, (Chairman), P. Petty, (Hon. Sec.), J. Cole, D. Hendon, A. E. Wilson.

For the first term, we were fortunate to have the use of the old Dining Hall, pending its conversion to a library. There was room for two tables and every use was made of them, students played at every opportunity. During the term well over one hundred students played at various times, over seventy competing in the Men's and Womens' Singles Tournaments, which were won by Mr. J. Hawke and Miss B. Adamson respectively, after some excellent matches.

At the end of the term the builders moved in and we were evicted, returning in January to find ourselves homeless once more. The Director was at last persuaded to allow us the use of the Loose-Box for a few hours each week. This is not enough, however, and we must continue to press for a room which will be set aside for the exclusive use of the club.

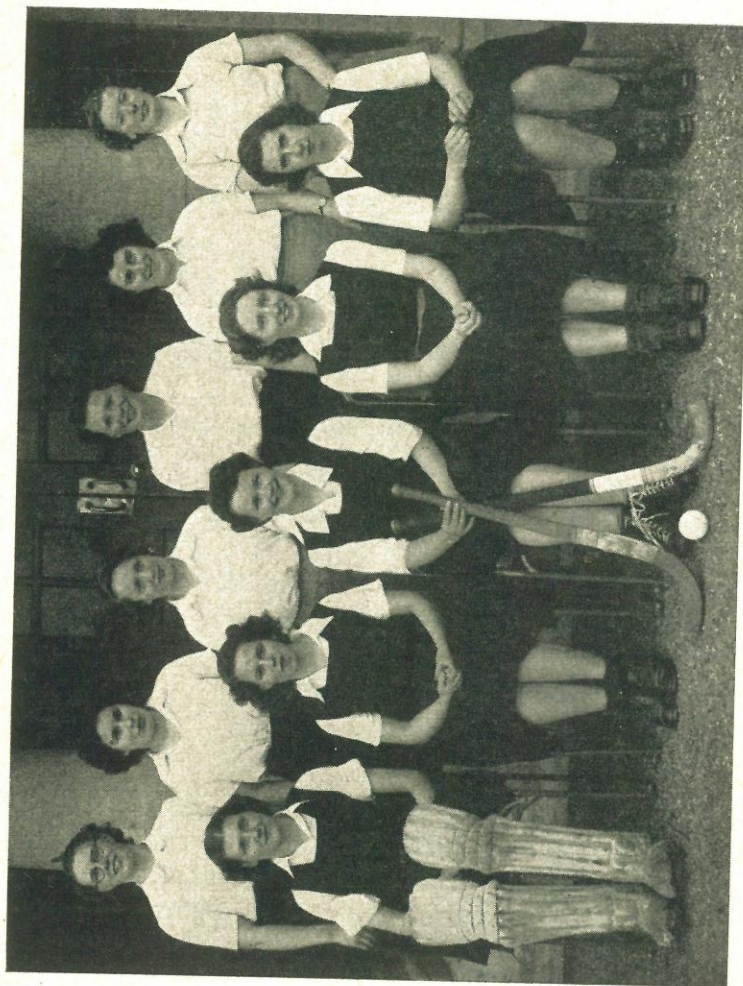




WOMEN'S HOCKEY—1st XI.

C. E. Metcalfe P. M. Creaser C. B. Barrett J. Hawke R. Powell\* M. R. Teesdale\*  
 A. R. Forster G. D. Hurst D. M. Hendon (*Captain*) J. B. Smalley J. M. Humberstone.

\*Denotes Colours awarded.



WOMEN'S HOCKEY—2nd XI.

E. Wright J. Pebody J. A. Thompson S. M. Wentworth C. M. Beardall D. N. Treneman  
 P. A. Twiss C. A. Franklin E. M. Robinson (*Captain*) P. S. Petty J. M. Wilson



Despite these difficulties, the club played several very enjoyable matches against local teams. Of these, four were won and three lost, J. Hawke playing some outstanding games. Next year it hoped to play more, especially if, as we hope, there will be some accommodation for home fixtures.

Our match teams comprised the following :—

Men : J. Hawke, T. Harris, P. Bashford, J. Cole, A. Arar, P. Jarvis.

Women. B. Adamson, P. Leggett, B. Clack, B. Loynes, J. Hunter.

The club having a larger membership than any other body in the College, provides an excellent and popular winter recreation for many, who play no other games. Nevertheless, we feel it does not receive the consideration its members and its importance deserve.

T.G.H.

### BILLIARDS AND SNOOKER CLUB.

After a session marked only by considerable lack of interest, no doubt due to the poor facilities available and lack of talent in the new intake, we can only hope that when the new Union building is erected, the improved facilities will foster greater interest and a higher standard of billiard-room etiquette.

We won our one outside match of the season, against Sutton Bonington and a knock-out competition was eventually finished late in the Summer Term.

Thanks are due to Mrs. Bailey for her efforts to keep the billiard room clean.

S.C.B.

### THE ATHLETIC SPORTS.

After a lapse of two years sports day, instead of being in conjunction with Commemoration day, was held as a separate occasion on Wednesday, May 11th. Due to this change the crowd was not as large as in previous years, but what it lacked in size it made up for in enthusiasm.

The trophies were presented in the Main Hall by Mrs H.G. Robinson after tea.

The individual performances in both field and track events were of a high standard, three new records being set up.

C. J. Black must be congratulated for winning two of these records, the  $5\frac{3}{4}$  mile Cross Country in 33 mins. 1  $\frac{3}{10}$  secs. and the Mens' Mile to 4 mins. 45 secs.

The Long Jump record was again broken by P Gosden.

The Victor Ludorum Shield was won by C. J. Black with

28 points, closely followed by H. Darby with 27 points. The Victrix Ludorum was for the 2nd year running won by Miss C. Metcalf with a total of 19 points and for this feat we offer her our congratulations. The Runner-up was Miss B. Robinson with 14 points.

Grateful thanks are extended by the Sports Committee to members of the Staff and students who did so much to make this Sports Day a success.

J.M.

### RESULTS.

Events decided before Sports Day.

1—Cross Country Race Men—(The Staff Cup)

1, C. J. Black ; 2, H. Darby ; 3, J. B. Smith ; 4, J. Markham.  
Time 33 mins. 1  $\frac{3}{10}$  secs. (New Record).

2— $2\frac{3}{4}$  Mile Road Race—Men (Milburn Cup).

1, C. J. Black ; 2, J. Large ; 3, S. Unsworth.  
Time 14 mins. 8  $\frac{4}{5}$  secs.

3—Ladies Mile—(Hunter Cup).

1, R. Forster ; 2, D. Hendon ; 3, R. Powell.  
Time 6 mins. 29  $\frac{3}{5}$  secs.

4—Place Kick—Men.

1, R. J. Wellington ; 2, S. Marples ; 2, R. Cartwright.  
Distance 52 yds. 1  $\frac{1}{2}$  inches.

5—Cricket Ball—Men.

1, J. Hawk ; 2, F. Kitwood, 3, C. B. Payne.  
Distance 94 yds. 4 inches.

6—Cricket Ball—Women.

1, P. Leggett ; 2, M. Seymour Mead ; 3, M. Abbott.

7—880 yards—Men.

1, H. Darby ; 2, J. Black ; 3, J. Markham.  
Time 2 mins. 15 secs.

Sports Day Events.

8—100 Yards—Men (Sumner Cup).

1, P. Gosden ; 2, C. R. Jacobs, 3, H. Darby.  
Time 10  $\frac{4}{5}$  secs.



- 9—220 Yards—Men (Brewill Cup).  
1, P. Bashford ; 2, H. Darby ; 3, P. Gosden.  
Time 25  $\frac{1}{5}$  secs.
- 10—440 Yards—Men.  
1, H. Darby ; 2, T. Crosby ; 3, P. Bashford.  
Time 56  $\frac{4}{5}$  secs.
- 11—1 Mile—Men  
1, C. J. Black ; 2, J. B. Smith ; 3, J. B. Nicholson.  
Time 4 mins. 45 secs. (New Record).
- 12—120 Yards Hurdles—(Shaw Cup).  
1, J. Channon ; 2, P. Bashford ; 3, P. Spalton.  
Time 18  $\frac{2}{5}$  secs.
- 13—High Jump—Men.  
1, J. Hawke ; 2, P. Gosden ; 3, I. Ford.  
Height 5 ft.  $1\frac{1}{2}$  inches.
- 14—Long Jump—Men.  
1, P. Gosden ; 2, P. Spalton ; 3, D. Davison.  
Distance 19 ft. 8 inches (New Record).
- 15—Putting the Shot.  
1, I Ford, 2, T. Crosby ; 3, C. R. Jacobs.  
Distance 32 ft. 9 inches.
- 16—Javelin.  
1, F. Kitwood ; 2, J. Hawke ; 3, A. E. Greenwood.  
Distance 122 ft.  $6\frac{1}{2}$  inches.
- 17—Discus.  
1, C. R. Jacobs ; 2, C. B. Payne ; 3, I. Ford.  
Distance 106 ft.  $11\frac{1}{2}$  inches.
- 18—100 Yards—Women.  
1, C. Metcalfe ; 2, B. Robinson, 3, M. Teesdale.  
Time 12  $\frac{2}{5}$  secs.
- 19—80 Yards Hurdles.  
1, C. Metcalfe ; 2, M. Betts ; 3, P. Petty.  
Time 13  $\frac{1}{5}$  (Equals record).
- 20—220 Yards—Women.  
1, B. Robinson ; 2, M. Teesdale ; 3, D. Hendon.  
Time 31 secs.

- 21—High Jump.  
1, C. Barrett ; 2, P Leggett ; 3, C. Metcalf.  
Height 4 ft.
- 22—Long Jump.  
1, C. Metcalf ; 2, B. Robinson ; 3, (tied) J Humberstone,  
D. Hendon.  
Distance 14 ft.  $2\frac{1}{2}$  inches.
- 23—Tug of War—Men.  
1, South ; 2, East.
- 24—Inter County Relay Race. (Marshall Cup)  
1, East ; 2, South ; 3, North ; 4, West.
- Victrix Ludorum Shield—Miss C. METCALF, 19 points.
- Victor Ludorum Shield—Mr. C. J. BLACK, 28 points.
- Runners-up—Miss B. ROBINSON, 14 points, and Mr. H. DARBY  
27 points.
- The Robinson Trophy (County Average Award)  
1. Lincolnshire and the East, 3.82 points.  
2. Leicestershire and the South 1.81 points.

### MENS' LAWN TENNIS CLUB.

#### SEASON 1949.

*Captain* : R. J. Wellington. *Secretary* : R. Cater.

Tennis has been a very popular game at the School of Agriculture this year. It is regrettable that full use could not be made of the grass courts but a shortage of labour resulted in their being unserviceable. The two hard courts have given good service but are inadequate for matches involving three doubles and they have tended towards the atmosphere of five-day test matches.

In spite of the game's popularity, we have found difficulty this year in finding players of sufficient ability for the making of a formidable and hard hitting team. However, our players have consistently given of their best and the match results bear no relation to the number of spirited rallies nor to the mutual enjoyment derived from the intense application of applied psychology which makes tennis such an intriguing game.

The Committee willingly decided to award Colours to Mr. R. J. Wellington who, throughout two seasons, has worked hard for the well being of the Club and has shown us some delightful play.



Our mixed doubles matches with the Women's Team were a great success and the mixed doubles knock out competition, which was open to anyone, provided some ludicrous situations both for players and onlookers.

The finals were won by Miss Smalley and Mr. Harris who came through all happy and laughing in spite of the muggy weather and, might I add, some spirited opposition. R.C.

### RESULTS.

Wed. May 4	Home	U. C. Leicester	Lost	7—8
Sat. May 7	Away	U. of Nottingham	Lost	9—0
Sat. May 14	Away	Harper Adams	Won	9—2
Sat. May 21	Home	M.A.C.O.S.A.	Lost	3—6
Wed. May 25	Home	India Assoc. Loughboro' Coll.	Lost	4—5
Wed. June 1		Staff. (Mixed)	Won	

### WOMENS' TENNIS CLUB.

*Captain* : Miss Leggett.      *Secretary* : Miss Care.  
*Committee* : Miss Hamilton, Miss Brooke.

The club has had some enjoyable tennis this season, in spite of a typical British summer causing the cancellation of four matches.

Miss Leggett has proved a very able captain, and the club congratulates her and Misses Close, Barrett and Kirby on being awarded their colours.

The following played in the team :—

Miss Leggett (Captain) Misses Hamilton, Close, Smalley, Barrett Kirby, Brooke, Care.

Results of matches to date :—

v	Leicester Domestic Science College	Won
v	University College Leicester	Lost
v	Derby Training College	Lost
v	Brush Loughborough	Won
v	Rolls Royce Derby	Lost

Mixed matches :—

v	Staff	Won
v	M.A.C.O.S.A.	Lost
v	Harper Adams	Won

M.C.



**MEN'S TENNIS TEAM, 1949.**  
 S. Farrington   R. J. Wellington\*   P. M. Jarvis  
 T. G. Harris   J. A. Hawke (Captain)   A. W. Gibbon.

\* Denotes Colours awarded.





WOMEN'S TENNIS TEAM, 1949.

E. A. Kirby\* M. C. Close\* P. E. Brooke M. E. Care J. B. Smalley  
C. B. Barrett\* H. P. Leggett\* (Captain) K. M. Hamilton.

\* Denotes Colours awarded.

## CRICKET CLUB. 1949.

Captain : C. Jenkins. Vice-Capt. : T. B. Crosby.  
Hon. Sec. : H. J. M. Darby. Asst-Sec. : J. McKerrow.  
2nd year representative : P. C. M. Bashford.

This season has been one of outstanding success for the College Cricket team. At the date of going to press the team has been defeated once and then only by two runs. So strong have been both the batting and bowling that there was only one match in which a decision was not reached.

At the beginning of the season, we started with several advantages over last year. Firstly, we had the benefit of two concrete practice wickets, which had been laid during the Easter vacation. Secondly, we had all but four of last year's team left at college to form a sound base on which to build the new one.

The batting of the team has been such that we have only once failed to get over 100 runs. Jenkins and Crosby have been our outstanding batsmen and both have frequently made over 50 runs in an innings. Sherlock, Bashford, Coulthurst and McKerrow have contributed both steadiness and forcefulness at the wicket.

Bowling has been of as high a standard as the batting, Kitwood showing equal accuracy and even more pace than last year. Jenkins, Bashford and Thompson have all had a very successful season.

The outstanding match of the season was undoubtedly the one we lost. It was our first all-day match and was played against Porchester Cricket Club on Whit-Monday. Another very interesting and amusing game was the one with the village, whom we beat fairly easily—much to our delight.

The Club is very grateful to Mr. Martyr and the Horticultural staff for the work they have put in on the Square and in connection with the concrete nets. Also we would like to thank those who have been good enough to fill the posts of umpire and scorer.

Colours have been awarded to T. B. Crosby and P. C. M. Bashford.

Leading batting averages :—

Jenkins 32.2. Crosby 31. Sherlock 31.

Leading bowling averages :—

Jenkins 4.6. Kitwood 4.7 Bashford 6.3.

H. J. M. D.



## RESULTS.

Notts Catholic	Won	101—69
R.A.F. Hucknall	Won	106—105
Derby Technical College	Won	145/2 Dec—16.
Harper Adams Agric. Coll.	Won	194—34.
Stamford Hall Co-op Coll.	Won	132/5—131.
M.A.C.O.S.A.	Won	158/7—38
Notts University 2nd XI	Drawn	106—79/9
Sutton Bonington	Won	150/7 Dec—46
Porchester C.C.	Lost	35 & 95/4 Dec—37 & 99/8
R.A.F. Hucknall	Won	By 7 wkts—65.
Loughborough College.	Won	By 7 wkts—26
Staff XI	Won	By 7 wkts—31.

## WOMEN'S CRICKET CLUB, 1949.

*Captain :* Daphne Hendon.

*Secretary :* Pat Twiss.

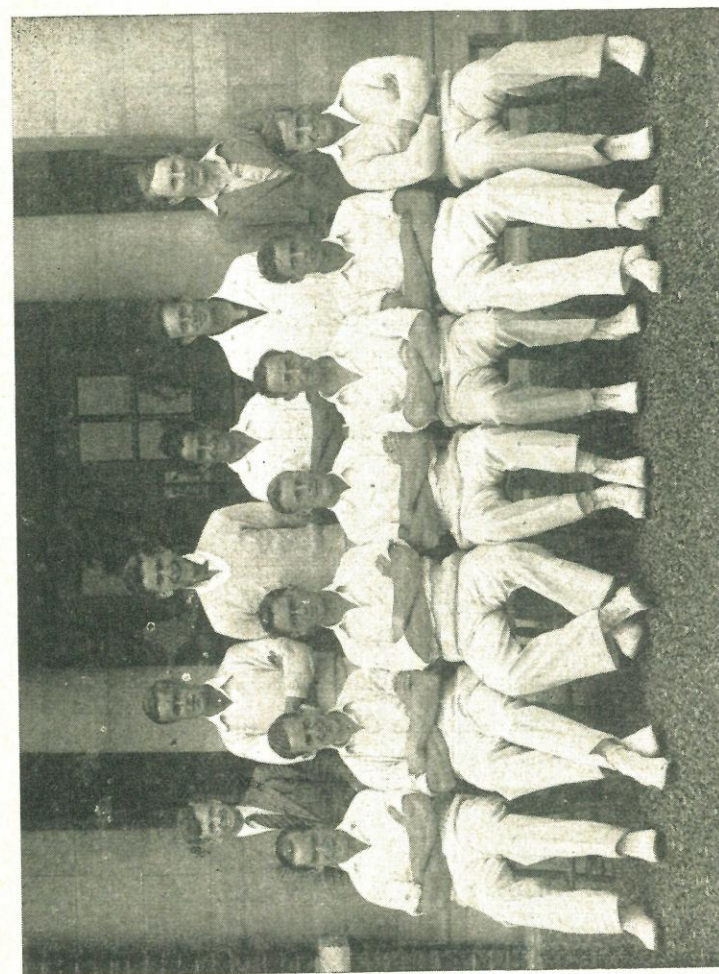
*Committee Member :* M. Seymour Mead.

This season the foundations have been laid for a Women's Cricket Team to represent the School of Agriculture. It was found that, though few women had played cricket, many were keen to try, and that, since a large proportion of these were First Year Students, it seemed likely that, with practice, they would form the nucleus of a team next season.

Accordingly, the policy of the Club has been to encourage any women interested, experienced or otherwise, to practice at the nets. Coaching has been given in the main essentials of good play, and the rest left to the individual, since time will obviously not permit a detailed grounding of each player. In spite of this, a surprising amount of talent has been shown and has been directed along the right lines.

Next season, therefore, it is hoped to arrange some outside fixtures and fully to establish Women's Cricket as one of the School of Agriculture's sporting activities. It will help to give the women an appreciation of one of the best English games, as well as affording them much pleasure and an outlet for surplus energy.

D.H.



CRICKET TEAM, 1949.

H. J. Darby J. L. Roberson J. E. B. Cole G. Thompson M. A. Paine (*Umpire*) G. E. Lowry (*Scorer*)  
A. G. Sherlock P. C. Bashford\* T. B. Crosby C. F. Jenkins (*Captain*) J. C. McKerrow F. Kitwood D. W. Harrison

\* Denotes Colours awarded.



# OFFICERS, 1949

<i>Honorary President :</i>	THE DIRECTOR.
<i>President :</i>	MR. F. J. SOWERBY.
<i>Vice-President :</i>	MR. S. F. MARTIN.
<i>Treasurer :</i>	MR. R. B. SHAW.
<i>Joint Secretaries :</i>	MISS M. BRINDLEY. MR. R. SCOTT. MR. S. F. MARTIN.

## Committee :

The Officers, together with :—Miss R. M. Beal, Messrs. P. Baddiley A. P. L. Casling, W. H. Cragg, K. Dexter, W. E. Heath, J. P. Hudson, C. R. Middleton, G. T. Mollart, R. F. Norman, and H. B. Pickworth and ex-officio, the Chairman of the Students' Union.

*Hon. Auditor :* MR. R. O. WOOD.

## Official Outfitters :

Messrs. Bailey & Simpkin Ltd., 26-27, High Street,  
Loughborough.

# SECRETARIES' REPORT.

At the time of going to press, the membership of the Association stands at 480, consisting of 344 life members and 186 annual members. This figure is slightly higher than that at the same time last year, but is 60 short of the record membership of last December.

One of the main activities of the Association has been the formation of a War Memorial Fund to commemorate those old students who lost their lives in the recent war. All old students since 1929 and members of M.A.C.O.S.A. have been approached in connection with the appeal. In all, 2012 appeals have been sent out, supplemented by insertions in the correspondence columns of the local and farming papers. 360 contributions totalling £346 11 0 have been received. Many suggestions as to the possible form of Memorial have been received, some of which were rather ambitious and outside the limits of the money realised. It was felt by the annual General Meeting that it would be more fitting to devote the proceeds to a definite and separate object, rather than to merge them into some University project. It was decided also to take a ballot of the selected suggestions. This ballot paper is in course of preparation at the present time and the form of Memorial will be settled before the publication of this magazine. We should like to express our appreciation to Mr. G. H. Green of the Economics Department who has under taken the entire organisation of the Fund.

We feel sure that all members would wish us to congratulate Mr. R. B. Shaw on his marriage to Miss J. Inkpen. Mr. Shaw has fulfilled the duties as Treasurer of the Association for many years and we wish him all success and happiness in the future.

During the past year a Summer Reunion was held in July in addition to the customary and well-established function in December. It was felt that a Summer Reunion would help in meeting the needs of those members who find it impossible to leave their work at Christmas-time. While this object was achieved to some extent, the response was rather disappointing, as only 85 people attended. Those of us present at the afternoon session were privileged to hear an excellent address by Dr. Duncan of Aberdeen. The Committee has decided that another trial shall be given to such a Reunion and the date fixed is Friday, July 29th. Further particulars will be circulated in due course.

The Christmas Reunion, attended by about 180 people, proved to a very enjoyable and successful event. We were particularly pleased to have as our principal guest and speaker an old student, Mr. G. W. Lock, who was on leave from Tanganyika.



An effort has been made during the year to establish greater co-operation and understanding between M.A.C.O.S.A. and the Students' Union. This has resulted in the formation of an agreement in connection with the publication of the magazine. The changes include M.A.C.O.S.A. representation on the magazine committee, annual meetings between M.A.C.O.S.A. and the Students' Union to fix the price of the magazine and the inclusion in the magazine of contributions from old students.

The past year has seen in increase in the interest of old students in M.A.C.O.S.A. fixtures with the present students. During the winter season matches were arranged at rugby and mixed hockey. The rugby match was a well fought game which resulted in a win for the present students. The mixed hockey match was quite outstanding and after a really grim struggle the students stood the pace and won by 5 goals to 3.

During the summer term fixtures were arranged at cricket and mixed tennis. Results were as follows:—

Cricket: Lost, 157 for 7 : 38.

Tennis: Won, 5 : 3.

As stated earlier in the report, it is hoped to arrange a Summer Reunion on Friday, July 29th. It is the intention of the Committee to have sports fixtures in the afternoon and the following are suggested. Firstly, a cricket match "Pre-1939" v "Post 1939". If you are interested in this game please **send your name to the secretary at once**. Secondly, for the tennis players we would like to organise an American Tennis Tournament, so tennis fans it is up to you to provide sufficient entries to make this venture a success.

Sports fixtures with the student teams during the 1949/50 session have been arranged as follows:—

Rugby and Mixed Hockey—12th Nov. 1949.

If you are interested in playing in these games please notify the secretary at least six weeks before the day of the match.

Before closing, we should like to express our sincere thanks to Professor Robinson for his co-operation and interest in the year's activities.

MARJORIE BRINDLEY.

R. SCOTT.

S. F. MARTIN.

#### PERSONAL NOTES.

**Miss M. Anderson** (1946-8) has a post as Assistant Bacteriologist at a large pasturising and cheesemaking dairy near her home in Lancashire.

**R. H. Andrews** (1942-44) is General assistant at the Park Department, Bournemouth.

**A. Asher** (1941-3) now managing one of the Hosier farms in Wiltshire, is recovering from his serious accident last August. We all sympathise with Arthur now that "the leg" has forced him to hang up his football boots.

It is with deep regret that we record the death of **K. W. B. Allen** (1933-35) Also that of **W. S. Bullivant** (1920-22) after developing a serious illness in Germany.

**G. W. Battersby** (1946-8) and **M. H. Greensmith** (1942-4) are on the staff of the Agricultural Training Centre at Riseholm, near Lincoln.

Congratulations and best wishes to **L. Bannister** (1945-7) and **Miss M. E. Nichols** (1946-8) on their marriage last December. They are living near Lowestoft.

Best wishes to **Miss N. H. Bate** (1946-8) and **J. W. Stone** (1946-8) and **Miss M. E. Bates** (1946-8) and **S. Marples** (1947-9) on their respective engagements.

**Miss D. K. Barnicott** (1946-8) has a post as Poultry Advisor in Notts. We trust she has a comfortable and warm bed in her new sphere of life!

**Miss J. H. Best** (1945-7) is a milk production officer in Herefordshire, while **Miss W. Belfield** (1943-5) and **Miss R. L. Cunningham** (1945-7) hold similar posts in Oxford and Suffolk respectively.

**L. R. Bedford** (1946-8) has recently been appointed farm bailiff at the new Notts. Farm Institute.

**R. Gore-Brown** (1944-6) has joined the Regular army.

Best wishes to **Miss B. A. Blore** (1939-41) on her recent engagement.

Congratulations to **P. Baddiley** (1938-41) and his wife (**E. B. Shaw**, 1938-41) on the birth of another child this year.

**A. P. L. Casling** (1946-8) is lecturer and demonstrator in Agriculture at the Shuttleworth Agricultural College in Bedfordshire.

**W. C. Cowlshaw** (1942-4) is now happily married and is farming at Crowborough, Sussex.

**A. R. Carter** (1943-5) is Horticultural Officer at a Home Office approved school in Co. Durham. He and his wife (**A. Burrows** 1942-4) have a busy time with their two small daughters.

Congratulations to **M. H. Carpenter** (1942-4) and his wife (**B. M. Birkitt** 1942-4) on the birth of a daughter this year.

**Miss S. C. Cheshire** (1944-6) has a post as bacteriologist in a pasteurising and ice-cream factory in Sherbourne, Dorset. She finds the work very interesting and has had the pleasure of designing her own laboratory.



**F. Constable** (1938-9) has obtained a horticultural post in Leeds. He and his wife (**M. E. Blore** 1938-40) have been fortunate in getting a house there.

**Miss N. Clay** (1945-7) is working on a farm in Denmark.

**W. H. Cragg** (1946-8) is farming on his own account in Kent. The type of farming is uncertain, but believed to be connected with grass seeds. He says that he finds the study of local village life particularly interesting.

It is with regret that we record the death in January, 1949 of **A. C. Cross**.

Congratulations to **J. Doyle** (1930-33) and his wife (**P. Severn** 1930-2) on the birth of a son.

**K. Dexter** (1946-8) has joined the staff of the Economics Department. He still manages to make himself heard on the Hockey Field.

**B. J. Edwards** (1945-7) has a post as Warden and lecturer in Crop Husbandry at Brooksby Hall Training Centre in Leicestershire. He gives us the following news: **R. H. Clarke** (1944-6) has been livestock manager to Mr. C. Nicholson of Gainsborough for the last two years, and has the worry of managing several thousand cattle, pigs and sheep. He has also seen "Kees" Van Den Bos, who happened to be working hard, and **E. Albone** (1945-7) Ted Albone has managed to acquire a 140 acre farm on which he hopes to demonstrate the "Sutton B" method of farming ("with modifications").

**G. Eyre** (1932-3) has left Sandiacre and now has gardens in Dorset.

**Mrs Ferraro** (M. M. Baston 1934-6) is now living in West Bridgford and will be pleased to see any of her student contemporaries. Our best wishes to her in her recovery from the illness contracted while volunteering as a blood donor.

**Miss P. F. Ferreira** (1941-3) is to be congratulated on qualifying as a fully fledged landscape architect. This, we understand, is a rare distinction for a woman.

**G. C. R. Gibson** ('Gibbie' 1941-3) was married last August and is now with the N.A.A.S. in Northampton.

**Miss A. G. Henderson** (1944-7) has a post as Assistant area supervisor in the National Milk Testing Service at Birmingham.

We were pleased to welcome back from New Zealand **J. P. Hudson** (1927-31) and his wife (**G. M. Hudson** 1930-2). Mr. Hudson is on the staff as lecturer in Horticulture.

Congratulations to **A. H. Ingram** (1945-7) and **Miss P. Ash** (1945-6) on their marriage last July. They are living in Newark.

Congratulations also to **W. C. Jackson** (1942-4) who was married last August. He is now working in the family machinery business at Hertford.

**Miss D. Johnson** (1944-7) is working a 150 gallon a day Producer retailer in Sutton Coldfield.

Beat wishes to **Miss D. F. Kilpatrick** (1941) on her marriage to Mr. W. Taylor of Chesterfield.

**P. D. Kemp** (1942-4) sent a few lines at Easter-time from Wales. He was on potato work for the Ministry and was thinking of sending for **T. A. L. Morgan** (1942-4) to act as interpreter.

**E. Kimbell**, looking very prosperous, visited the School of Agriculture last year.

We were pleased to see **G. W. Lock** (1922-25) at the Annual Reunion last December while on leave from Tanganyika.

**J. Lumby** (1942-4) is farming at home at Donington, Lincs. He manages so keep a fatherly eye on **G. R. Holmes** (1944-6) who lives in the same village.

**Miss R. Maddock** (1945-7) has joined the N.A.A.S. as a poultry advisor.

**S. F. Martin** (1933-5) has left Germany and is now Y.F.C. organiser for Notts, but still retains the girth acquired in Germany. When last seen he was groaning in anticipation of the strain of the M.A.C.O.S.A. cricket match.

**G. T. Mollart** (1943-5), now married, is busy farming at Winkburn, near Newark, and is Vice-Chairman of the Cauntton Y.F.C. He now sports a huge moustache!

**T. A. L. Morgan** (1943-5) is still studying for his M.R.C.V.S. at London University.

**R. F. Norman** (1946-8) has a post graduate scholarship in Agricultural Engineering at King's College, Newcastle-on-Tyne.

**J. R. Pope** (1940-2) is Y.F.C. Organiser for Leicestershire. He took a party of Leics Young Farmers to Denmark in May this year.

We are pleased to report that **A. J. Quick** (1941-3) is now recovering from his long and serious illness. He says that he is looking forward to doing a job of work again in the not too far distant future.

**Miss J. E. Ray** (1942-4) is assistant poultry advisor in Suffolk.

**Mrs Richards** (R.U. Glossop, 1937-9) has a house at Belper in Derbyshire and will be pleased to see any of her contemporaries. She finds life interesting and busy with her small son Paul.



**Miss M. S. Robey** (1939-40) is a student at a Teachers' Training College in Worcestershire.

**J. W. Rowland** (1933-7) is busy getting the Kesteven Farm Institute going, but in spite of this did a good job of work as M.A.C.O.S.A. President last year. Congratulations to him and his wife on the birth of a daughter last August.

**C. W. Roberts** (1919-23) is Senior Agricultural Economist at the West of Scotland College of Agriculture.

During an N.A.A.S. Livestock course at Sutton Bonington in April we were pleased to see the friendly faces of **N. F. Sampson** (1942-4), **G. H. Proffit** (1932-4), **W. A. Wagstaff** (1942-4) and **E. C. Clifton** (1942-4).

**F. Siddall** (1936-9) is still busy chicken farming in Norfolk. He tells us that they have now increased their incubator capacity up to 60,000.

The most outstanding and amazing piece of news this year is the marriage of our Treasurer, **Mr. R. B. Shaw** to Miss J. Inkpen, formerly Poultry adviser in Wiltshire.

#### **To B. Shaw and Eggsact.**

Easter is a time for eggs,  
And eggs mean R. B. Shaw  
Who through the years has studied birds,  
By dozens and by score;  
In nineteen forty nine, howe're  
Our hero caused a shock,  
Instead of eggs he took a wife  
Surprising all his flock.

So for the pair of poultry fame  
Good luck and health, M.A.C.O.S.A. begs.  
The moral is, you bachelors gay,  
The day will come as "Shaw as eggs".

Congratulations and best wishes to **G. M. Shepherd** (1946-8) and **Miss S. M. Russell** (1944-7) on their marriage in May this year.

**Miss E. Salsbury** (1942-4) is in charge of a Youth Hostel at Northfield, Massachusetts. She writes, "Here at Northfield I have been taking charge of the Hostel, selling equipment etc and trying to find time to do the garden. This was impossible and the result is a wilderness! On her way to Northfield she spent a hectic week sightseeing in New York.

**J. D. M. Stafford** (1942-3) has a post at Tuxford and Tebbutts Stilton cheese factory at Melton Mowbray.

Congratulations to **Mrs Squibbs** (N. Roper, Staff.) on the birth of a son last year. She and her husband have recently flown to this country on a visit from Cyprus.

**A. R. Treble** (1934-7) is on the staff of the Kesteven Farm Institute.

**P. Walker** (1935-7) has been working as Livestock officer in the West Riding of Yorkshire. From rumours we hear, however, he seems to miss the Midland air!

**G. R. Watkins** (1941-4) writes from Rakwana, Ceylon, to tell us that he is now manager of a Brook-Bonds' tea estate. Gerry is now able to speak the native tongue and is enjoying life.

**Miss R. Westacott** (1944-6) is working on a poultry farm near Keyworth, Notts.

**A. G. Wyman** (1938-9) is working as an Area supervisor in the National Milk Testing service in Notts.

**Miss M. G. R. Walker** (1946-8) is working at a model farm near Dartmouth in charge of a herd of South Devons. We were very sorry to hear that she lost all her belongings when her recently acquired flat caught fire. Margaret, herself, escaped with two sprained ankles after jumping from a window.

Best wishes to **K. W. Ward** (1946-8) and **Miss B. M. Holden** (1946-8) on their marriage this year. After much searching they have managed to obtain a farm in Somerset.



[illegible][illegible]

N,  
Hon Treasurer.

R. O. WOOD,  
*Hon. Auditor.*

\* *Demotes Life Member.*

55



*Benson, J. P.	....	Agricultural Dept., Embo, Jenya.	D.A., D.D. 1924-27
Best, Miss J. H.	....	12 Church Road, Impsley, Hereford.	D.D. 1945-7
*Bethell, Mrs. B. M. (nee B. M. McCallum)	....	Riverdale, Mytham Bridge, Bamford, Sheffield.	D.P. 1932-3
*Birchenough, G.	....	The Manse, Rainhall, Barnoldswick, Colne.	D.D. 1942-4
*Bishop, G. R. H.	....	22 Meadow House Road, Corstophine, Edinburgh, 12.	D.D., Deg A. 28-30, 32-3
*Bishop, K. C.	....	South Farm, Harthill, Sheffield.	C.A. 1919-20
*Black, J. A.	....	Susworth, Scunthorpe, Lincs.	D.A. 1943-45
*Blackwall, J.	....	Blackwall, Kirk Ireton, Derby.	D.A. 1926-28
Blagg, M. C.	....	3 The Green, Lowdham Grange, Lowdham, Notts.	C.A., C.D. 1938-39
*Blagg, Miss Z.	....	Woodnook Farm, Whitwell, Worksop, Notts	C.D. 1939-40
*Bland, L. H.	....	Smithfield Road, Shrewsbury, Salop.	F.P. 1930-1
*de Blank, S.	....	Flat 4, Mapleton House, Four Elms, Edenbridge, Kent.	F.P., D.A. 1923-7
*Blore, Miss B. A.	....	Cream Gorse, Melton Mowbray, Leics.	D.D. 1939-41
Bloy, J. B.	....	Coldham House, Friday Bridge, Nr. Wisbech	D.A. 1946-48
*Boddy, F. A.	....	Sale Park Lodge, Cheltenham Drive, Sale.	C.H. 1930-31
*Bond, Mrs. R. F. (nee A. Porritt)	....	Little Fulford, Kingston St, Mary Taunton, Somerset.	C.D. 1928-29
Bower, A. S.	....	Crest House, Grange Park Drive, Cottingley Bingley, Yorks.	1918-19
*Brett, Mrs. P. (nee E. M. Stocks)	....	Ashtree Farm, Ludborough, N. Thoresby, Lincs.	C.P. 1927-8
*Brewitt, J. R.	....	Stanmore, Nottingham Road, Natal, S. Africa.	C.A. 1919-20
*Brieant, Mrs. E. M. (nee E. M. Spurr)	....	Allots Moss Cottage, Oakmere, Northwich, Cheshire.	D.D., C. P. 1919-21
*Brindley, Miss M.	....	School of Agriculture, Sutton Bonington.	D.D. 1938-40
*Briggs, S. R.	....	Cordwell House, Cordwell Valley, Holmes( field, Near Sheffield.	C.A. 1943-44
*Briggs, Mrs. L. M. (nee L. M. Bourne)	....	Otters Farm, Stokeham, Retford, Notts.	C.D. 1929-30
Brammer, Miss S.	....	Merrivale, Sheepwalk Lane, Fishpool, Near Mansfield.	D.P. 1945-7
Brocklesby, Miss D.	....	College Farm, Lissington, Lincs.	C.D. 1942-43
Brooke, R. A.	....	Crow Trees, Gomersal, near Leeds.	C.H. 1946-7
*Brown, R. H.	....	College Farm, Luddington, Scunthorpe.	C.A. 1942-43
*Brown, A. K.	....	Solheim, Withcote, Oakham.	C.A. 1939-40
*Brown, A. G.	....	Hunster Grange, Tickhill, Doncaster.	C.A. 1942-3
*Browne, R. H.	....	Muckleton, Burnham Market, Kings Lynn.	D.A. 1929-31
Brownlow, H. H.	....	Casthorpe House, Barrowby, Grantham.	D.A., D.D. 1935-8
*Bruff, Miss V. P.	....	Hatfield Lodge, Nyn Park, Northaw, Herts	D.D. 1926-29
*Buck, P. A. F.	....	Quaverley, 53, Downham Road, Ely, Cambs	D.A. 1943-45
*Buckle, W. W.	....	5, Kearsley Road, Nr. Crumsall, Manchester	
*Buckley, H. R.	....	East Ravendale, Nr. Grimsby.	C.A. 1943-44
*Buckley, Miss K. C.	....	Hillside, Brigsley, near Grimsby.	D.D. 1944-6
*Burditt, Miss B. J.	....	White House, Ludenham, Leics.	D.D. 1938-40
*Byford, A. C.	....	Thurcaston Grange, near Leicester.	C.A. 1943-4
Canham, Miss. J. S.	....	155, Yarborough Road, Lincoln.	D.D. 1946-48
*Campbell, Miss S. C.	....	19 Whernside, Woodthorpe, Notts.	C.D. 1943-4
*Carlton, Mrs. I. B.	....	Laurel Farm, Dishforth, Thirsk, Yorks.	D.D. 1931-3
*Castle, Miss R.	....	3 St. Andrews Road, Coulsdon, Surrey.	D.D. 1942-4
*Carter, H.	....	Dishley Farm, Measham, Burton-on-Trent.	D.A. 1937-39

Carter, A. R.	....	16 Aycliffe School, Copelan, Aycliffe, Darlington.	D.H. 1943-45
Carter, W. R. B.	....	c/o Gluvian Farm, St. Columb Major, Cornwall.	Deg. Ag. 1946-48
Casling Miss M. S.	....	c/o Mrs. Kingdon, Kester Hill, Barton Rd., Exeter.	D.H. 1945-7
Casling, A. P. L.	....	Shuttleworth College, Oldwarden Park, Biggleswade, Beds..	D.A. 1946-8
*Cawley, C. S.	.....	Address unknown.	F.P., D.A. 1926-8
*Challand, R. H.	....	Park Cottage, Moreton, Leominster, Hereford.	D.A., D.D. 1921-4
Chaffey, S. R.	....	204 Maryvale Road, Bourneville, Birmingham	D.H. 1942-4
Chamberlain, Mrs E. M. (nee Allison)	....	99 Shanklin Drive, Stoneygate, Leicester,	C.D. 1928-30
*Chapman, Miss O. B. D.	....	Innisfail, 80 Himley Road, Dudley, Worcs.	D.D. 1941-3
*Charlton, Miss M.	....	The Baroon, Castle Donington, Derby.	C.P. 1925-6
Chatterton, J.	....	School of Agriculture, Sutton Bonington.	Deg. A. 1938-40 1946-47
*Cheke, Miss V. E.	....	The University, Reading Berks.	D.D. 1922
*Cheshire, Miss S. G.	.....	26 West View Avenue, Glen Hills, Blaby, Leicester.	D.D. 1944-6
*Chester, M. H.	....	Hickenwood Farm, Clowne, Derbyshire.	D.A. 1942-4
*Childs, T. H.	....	Tyrrillwood, West Horsley, Surrey.	C.P. 1935-6
*Clark, E. R.	....	North Cottage, Edstone Hall, Wooton W Wawen, near Birmingham.	C.A. 1930-1
*Clark, Miss B. K.	....	41 Hartington Street, Derby.	C.P. 1935-7
Clarke, Miss G. T.	....	151 Coleridge Road, Cambridge.	D.H. 1944-46
*Clarke, R. K.	....	Braedene, Manor Road Ext., Oadly, Leics.	Deg. A. 1944-6
*Clarke, Miss G. O.	....	The Chestnuts, Cossington, near Leicester.	C.D. 1939-40
Clarke, Mrs J. A.	....	Poplars Poultry Farm, Barlings, Langworth, near Lincoln.	?
*Clark (Maxwell, J. N.	....	Speddoch, Dumfries.	C.A. 1929-30
*Coates, P. J.	....	Witten Croft, Pinvin, Pershore, Worcs.	Deg. A. 1944-6
Coldicott, Miss P. M.	....	Lloyds Bank House, Stow-on-the-Wold, Glos.	D.P. 1946-8
Cole, Miss J.	....	Roxholme, Sleaford, Lincs.	D.D. 1945-7
*Colshaw, A. D.	....	Teddersley Home Farm, Penkridge, Staffs.	D.A. 1942-44
*Cox, M. E.	....	Grange Farm, Riseholme, Lincoln.	D.A. 1942-44
*Collin, W. C.	....	Three Ways, Scraftoft, Leicester.	D.H. 1943-5
*Coltman, W. E. B.	....	High Ashes Farm, Barlow, near Sheffield.	C.A., C.D. 1931-3
*Cooke, B. J. S.	....	70 Langton Hill, Horncastle, Lincs.	D.A. 1938-41
*Cooke, Mrs (nee K. Jeffery)	....	17 Wollaton Hall Drive, Nottingham.	D.D. 1928-29
Cooper, J. T.	....	Manor Farm, Desford, Leicester.	D.H. 1944-6
*Cooper, Miss M.	....	Pound Cottage, Bampton, Oxford.	D.H. 1932-6
*Corroyer, F. G.	....	Hatchetts, Newdigate, Dorking, Surrey.	C.A. 1922-3
*Cotton, P. E.	....	Ivydene, Earl Shilton, near Leicester.	D.A. 1927-30
*Cowlshaw, W. C.	....	Blythe Meadows, Gratwich, Uttoxeter.	D.A. 1942-4
*Cragg, Miss K.	....	Agricultural Institute, Usk, Monmouth.	C.D., C.P. 1924-6
Cragg, W. H.	....	Denholme, Walton Highway, Wisbech.	D.A. 1946-8
*Cranfield, H. T.	....	6, Forest Road, Loughborough.	Staff.
*Cross, A. B.	....	Lime House, Kirtton Lindsey.	C.A., C.D., D.P. 1930-32
Cunningham, Miss R. L.	....	c/o Mrs Wright, 8a, Church Street, Woodbridge, Suffolk.	D.D. 1945-7
*Curtis, W. J. T.	....	Newtown Grange, Desford, Leicester.	D.A., S.D., 1930-2
*Curzon, Miss M. A.	....	39 Oval Road, Gravelly Hill Birmingham.	D.D. 1927-8
Cope, A. E.	....	Shire Hall, Bedford.	D.D. 1926-8



*Daniels, C. ....	Address unknown.	C.D. 1926-7
*Darby, F. M. ....	c/o Mrs. Neville, Hall Farm, Methwold, Thetford, Norfolk.	D.A. 1942-4
*Darling, Mrs C. F. (nee Fraser)	2 Eildon Street, Edinburgh, 4.	D.D., D.P. 1920-4
*Dauncey, C. ....	Rosmanith, Somersall Park, Chatsworth Road, Chesterfield.	D.A. 1925-7
*Davis, A. W. ....	The Cottage, Stenton, Barrow-on-Trent, Derby.	D.A. 1941-3
*Davies, Mrs. R. P. (nee M. Wilson)	Sandybrook Hall, Ashbourne, Derbys.	C.D. 1943-4
*Davis, Mrs. A. W. (nee S. Sturgess)	The Cottage, Stenson, Barrow- on-Trent, near Derby.	D.A. 1941-3
*Davies, R. P. ....	Sandybrook Hall, Ashbourne, Derbys.	D.A. 1943-5
*Davy, Lt. Col. R. M. M.	87 Victoria Street, S. W. 1.	C.H. 1928-9
*Dawson Miss. P. I. ....	Hesleyside, 250 Uttoxeter Road, Mickleover	D.A. 1943-5
*Day, Mrs. H. S. (nee J. Milford)	3 Walnut Tree Road, Andover, Hants.	D.P. 1930-1
Day J. O. ....	Pyewipe House, Waddingham, Gainsborough	Deg. Ag. 1946-8
Deacon. C. R. ....	Old Rectory, Saddington, Nr. Leics.	D.A. 19414-3
*Dent, Miss E. K. ....	Woodlands, Knipton, Grantham.	C.P. 1923-4
Denton, J. ....	Dairy Farm, Wressle, Brigg, Lincs.	C.A. 1939
Dexter. K. ....	Harris Bridge, Sibson, Nuneaton.	Deg. Ag. 1946-8
*Dickson, R. M. ....	Bute House, Marple Bridge, Stockport.	D.D., F.P. 1932-5
Dixon, B. J. ....	Abbey Cottage, Weybourne, Holt, Norfolk	D.A. 1946-8
Dobson, D. R. M. ....	Shardlow Hall, shardlow , Nr. Derby.	D.A. 1946-8
*Dominy, J. N. ....	7 Erleigh Road, Reading, Berks.	Staff
*Domleo, G. T. ....	Sawley Grange, Long Eaton, Nottingham.	C.A., C.D. 1907-88
*Doughty, K. P. ....	Sarsen, Allington, near Devizes, Wilts.	D.A. 1929-31
*Doughty, L. R. ....	Amani Tanganyika, Territory E. Africa.	D.A. 1919-23
Downs, Miss M. P. ....	Greenlaw, Guiseley, Nr. Leeds.	D.A. 1945-7
*Doyle, J. ....	High Grove Farm, Cheadle, Ches.	D.A., D.D. 1930-3
*Doyle Mrs J. (nee Severn)	„ „ „ „ „ „	D.P., C.D. 1930-2
Duffin. F. ....	3 Pearl Avenue, East Kirkby, Notts.	D.A. 1944-46
*Dring J. V. ....	Bleasby House Farm, Legsby, Market Rasen, Lincoln.	D.A. 1924-6
*Dumelow, Miss B. ....	Oak Ash Farm, Chaddlesworth, near Newbury, Berks.	C.D. 1943-4
*Duncan. J. ....	Grindley Farm, Stowe-by-Chartley, Staffs.	Staff
Dunn R. D. ....	c/o Mrs McKeard, Stirch Farm, Byfield, Nr. Rugby,	D.A. 1946-8
Dunnett, R. J. C. ....	31 Wood Hill, Leicester.	C.A. 1939-40
*Eddy, Miss V. L. ....	Tregoose, Grampound Road, Cornwall.	D.D. 1943-45
*Edmunds, Mrs F. (nee Warner)	Thrushes Bush, near Harlow, Essex.	C.A., C.D. 1928-9
Edmunds. J. ....	Spinneys, Whitegates, Meopham, Kent.	Deg. A.G. 1946-8
*Edwards, A. J. ....	2 Court 2, Copeland Street, Derby.	Deg. A. 1934-5
*Edwards, B. J. ....	Esleford, 1 West Drive, Mickleover, Derby.	D.A. 1945-7
Edwards, Miss N. ....	Y.M.C.A. Hostel, 102 Watergate Street, Chester.	D.H. 1944-6
*Ellwood, A. A. ....	Manor House, Mareham-le-Fen, Boston.	C.A. 1905-6
*Evens, J. (Junr.) ....	Burton, Nr Lincoln.	?

Eyre, G. ....	Dudsbury Gardens, West Parley, Wimbourne Dorset.	S.C.A. 1932-3
*Ferraro Mrs. (nee Baston)	3 George Road, Westbridgeford.	C.P., D.P. 1932-6
*Flather, Mrs H. (nee B. Horton)	Stanning Hill Farm, Bolventor, near Launceston, Cornwall.	D.D. 1941-3
*Flint, Miss J. D. ....	Woodside, Cropston, near Leicester.	F.P., D.D. 1942-5
*Foster, A. V. B. ....	1543 Warwick Road, Knowle, Birmingham.	D.A. 1921-3
*Fotheringham, H. ....	Thonock Lane, Gainsborough, Lincs.	C.A., D.A. 1932-3, 35-7
*Froggatt, Miss L. M.	Chandlers Farm, Yateley, near Camberley, Surrey.	D.D., D.P. 1930-3
*Furness, H. C. ....	Address unknown.	C.P. 1932-3
*Furness, L. W. ....	Cartledge House, Great Hucklow, Buxton.	D.A. 1922-4
Gaskill, H. M. ....	1 St, Johns Terrace, Derby.	D.A. 1938-40
Geary, H. ....	67 Pinchbeck Road, Spalding, Lincs.	D.H. 1946-8
*Gibson, G. C. R. ....	147 Musters Road, West Bridgeford, Nottingham.	D.A. 1941-3
*Gibson, L. S. ....	2 Pond Toad, Blackheath, S.E.3.	C.A. 1940-1
*Gibson, Mrs. W. S. (nee E. M. Crossley)	Shardlow Hall, Nr. Derby.	D.D. 1925-7
*Gill, Dr. N. T. ....	H.A.A.C., Newport, Salop.	Staff
*Gittens, G. E. ....	Greenhill Nurseries, Wombourne, Wolver- hampton.	D.H. 1944-6
*Gledhill, J. H. ....	14 Vernon Road, Totley Rise, Sheffield.	D.A. 1944-6
Godfrey, I. M. ....	Marsh Farm, Marsh Lane, Solihull, Warwicks.	D.A. 1943-5
*Godsmark, R. ....	The Gideans, Horning, near Norwich.	C.A., C.D. 1907-8
*Goodwin, Miss M. ....	Boro' Fields, Walton-on-Trent, Burton-on- Trent.	C.P. 1942-3
*Godber, J. ....	Penniment Farm, Mansfield.	C.A. 1924-5
Gore-Brown. R. ....	19047341, Corporal, ACC ATT, 38th. TRRA, Officers Mess, Kinnel Park Camp, Rhyl.	D.A. 1944-6
*Gray, Mrs. (nee E. Turner)	Bassett Farm, Upper Langwith, near Mansfield.	D.D. 1933-4, 35-6
*Green, G. A. ....	Grange Farm, Shepshed, Loughborough.	D.D. 1935-7
*Greenhalgh, E. ....	45 Woodbeck, Retford, Notts.	C.A. 1942-43
*Greensmith, M. H. ....	Agricultural Training Centre, Riseholm, Lincs.	D.A. 1942-4
Greenwood Miss. D.	Charnwood, Sutton Bonington.	D.H. 1945-7
*Gunary, G. C. ....	Hollywood Farm, Tendring, near Clacton, Essex.	C.A., C.D. 1942-3
Gibson, J. ....	Little Holmwood, Four Elms, Edenbridge, Kent.	D.A. 1920-2
Gozney, R. ....	Orchard Hill, Askham, Nr. Newark.	S.A. 1933-4
*Hanson Mrs. (nee D. E. Carter)	20, Greenhill Avenue, Liverpool, 18	1931-4
Hall, C. F. ....	Bayhurst, Bracknell, Berks.	D.A. 1946-8
Haines W. J. C. ....	Church Farm, Belaugh, Norwich.	D.A. 1946-8
Haines, R. J. ....	The Georgians, High Street, Market Deeping, Lincs.	D.A. 1918-21
*Hallam, G. F. ....	Stretton Hall Farm, Oadly, Leics.	C.A. 1942-3
*Hartley, B. J. ....	c/o Aden Protectorate Dept. Agric. Secretariat. Aden.	D.A. Farm 1925-7
Harvey, M. J. ....	Station Road, Kegworth.	D.A. 1937-9
*Harvey, Miss W. E. ....	Boschetto Agricultural College, near Harrismith, O.F.S., South Africa.	C.P., C.D. 1925-6



*Haspel, C. A.	....	Belmont, Hazelwood Road, Duffield, Derby	C.A., C.D. 1927-9
Haslam, G. C.	....	Yew Tree Farm, Far Lane, Barlow, Near Sheffield.	D.D. 1937-9
*Heath, W. S.	....	School of Agriculture, Sutton Bonington.	D.A. & Deg. 1924-5, 27-9
Hebb, Mrs. D. R. (nee W. E. Mensing)	....	Orpington House, Plumtree, Notts.	1930-3
*Heler, Miss U. M.	....	County Poultry Station, Houghall, Durham.	C.H., C.P. 1930-1
*Henson, J. G.	....	Boothby Graffoe, Lincoln.	C.A. 1920-21
*Hewson, B. W.	....	Priory Farm, West Ravendale, Grimsby.	D.A. 1934-5
*Hewson, A. D.	....	Calderbrook, 20 Sydney Road, Guildford, Surrey.	C.H., C.D. 1934-6
*Hickson, Miss D. M.	....	19 Munsfield Drive, Alvaston, Derby.	D.P. 1945-7
Hill, Miss M. R.	....	Longfurlong Farm, Rosliston, Burton-on-Trent.	C.D. 1944
*Hill, R. W.	....	Manor Farm, East Bradenham, Thetford, Norfolk.	C.A., F.P. 1940-1
Hill, Miss B.	....	Knighton Mount, Adbaston, Stafford.	D.D. 1942-4
*Hill, P. I.	....	145 Roll Gardens, Ilford, Essex.	D.A. 1944-6
Hinchcliffe Miss A. M.	....	Strathdene, Derbydale, Nr. Huddersfield.	D.A. 1942-4
*Hirst, C. V.	....	Beech House, 2a Lowe Street, Swinefleet, Nr. Goole.	?
Hodgson, Miss M. S.	....	Little Lodore, Mincing Lane, Chobham, Surrey.	D.P. 1945-7
*Hirst, H. O.	....	Gilling House, County Mental Hospital, Mickleover, Derby.	C.D. 1925
*Hobson, P.	....	The Limes, 663 Newark Road, Swallowbeck, Lincoln.	D.A. 1942-4
*Holder, Miss D. M.	....	19 Ladderedge, Leek, Staffs.	D.D. 1944-6
*Holden, Dr. H. S.	....	Scotland Yard, London.	Staff
*Holden, M. I.	....	32 Sutton Road, Preston, Weymouth, Dorset.	C.A. 1925-6
*Hosker Miss K.	....	55 Kings Road, New Oscott, Sutton Coldfield.	D.D. 1946-8
Houghton, B. H.	....	4 Blacksmith Lane, South Littleton, Evesham, Worcs.	D.H. 1945-7
*Houghton, G. H.	....	The Grove, Asfordby, Melton Mowbray.	C.A. 1929-30
Hughes Miss M. C.	....	23 Butterton Road, Rhyl.	D.D. 1946-8
Humphrey, Miss J.	....	Meadowside, Leverington Common, near Wisbech, Cambs.	C.A., C.D. 1944-5
*Hunt, Miss M. A.	....	184 Kensington Road, Reading Berks.	C.D. 1923-4
*Hirst, F. H.	....	South View, East Markham, Newark, Notts.	C.A., C.P. 1929-31
*Hurst, J. C.	....	College Farm, East Markham, Notts.	C.A. 1928-9
*Hurst, Mrs. S. S. (nee A. A. Shearman)	....	Park Farm, Blyth, Worksop	D.D. 1927-9
Hudson, J. P.	....	School of Agriculture, Sutton Bonington.	Deg. Hort. & Staff. 1927-31
*Idiens, Miss J.	....	Hoyles Farm, Winchcombe, Glos.	C.A., C.D. 1944-5
Ingram, A. H.	....	47 Mapperley Road, Nottingham.	D.A. 1945-7
Ingram, Mrs. A. H. (nee Ash)	....	47 Mapperley Road, Nottingham.	C.D. 1945-6
*Jackson, Miss R.	....	Newnham House, North Parade, Grantham.	C.D., C.P. 1923-6
*Jackson, S. G.	....	Saltscar, Necomen Terrace, Redcar.	C.D. 1926-7
*Jackson, W. C.	....	1 Upton House, Fore Street, Hertford.	D.A. 1942-4
*Jacques, J. L.	....	18 Hathern Road, Shepshed, Loughborough.	C.P. 1934-5

*James, Mrs. W. M. (nee M. S. Atkinson)	....	Roxby, New Road, Ferndown, Wimbourne, Dorset.	
*Jacques, Miss I.	....	Danum, Birch Avenue, Sleights.	C.D. 1925
*Jeffery, R. A.	....	Sunray, Boma Road, Trentham, Stoke-on-Trent.	D.A. 1922-4
*Johnson, H. M.	....	Hodge Hill, Cartmell Fell, Grange-over-Sands, Lancs.	C.A. 1942-3
*Johnson, Miss R.	....	198 Unthank Road, Norwich.	D.D. 1943-5
Johnson, Miss D.	....	Hall Farm, Sutton Coldfield, Birmingham.	D.D. 1946-8
Johnson, Miss M. C.	....	c/o Mrs Riley, Cold Overton, Oakham.	D.D. 1945-8
Kell C. A.	....	Fair View, Birds Corner, Emneth, Wisbech.	D.A. 1943-5
*Kemp, P. D.	....	29 Milner Street, Newark, Notts.	D.A. 1942-4
*Kennedy, F.	....	12 The Larches, Teesill, South Bank, Middlesbrough.	1943-4
Kibble, Miss R. K.	....	Hall Farm, Wigston Parva, near Hinckley	C.P. 1942-3
Kilvington, -Miss R. S.	....	Rose Cottage, Skeffington, Lincs.	Deg. A.G. 1946-8
Kimble, E. E.	....	Boughton, Nr. Northampton.	C.A. 1925
*Kimble, O. D.	....	Agricultural Institute, Seale Hayne, Newton Abbott, Devon.	Staff
*Knowles, J. K.	....	55 Nightingale Road, Rickmansworth.	D.A. 1922-4
*Laing, J. A.	....	Manor Farm, Newton-by-Castleacre, Kings Lynn.	C.A. 1936-7
*Lamb, Miss I.	....	Trelawne, Maenporth, Falmouth.	D.D. 1943-5
*Lambert, P. W.	....	Home Close, Matlock.	D.A. 1944-6
*Lake, Mrs. (nee J. E. Jeffery)	....	17 Wollaton Hall Drive, Wollaton, Nottingham.	C.P., C.D. 1927-30
Lansdown, D. W.	....	Hatford House, Farringdon, Berks.	C.P., F.P. 1918-20
*Lansdown, Mrs. D. W.	....	Hatford House, Faringdon, Berks.	D.D. & Staff 1917-8
*Larder, H.	....	c/o Manor Farm, Low Toynnton, Horncastle.	D.A. 1942-44
*Laurance, J. D.	....	Threeways, Rehods, Bedford.	D.A. 1937-39
*Law, Mrs. (nee F. Hampson)	....	Eventide, Private Road, Turvey, Beds.	D.A. 1941-3
Lawton, J. T.	....	Ladypit Farm, Syerston, Newark, Notts.	D.A. 1937-40
*Leech, G.	....	8 Welbeck Street, Worksop.	D.A. 1937-8
*Ledger, Mrs. W. W.	....	Pool House, Ashby Folville, near Melton Mowbray.	C.A. 1938-9 C.P. 1927-8
Le Feuvre, W.	....	Colwood, Rue de Putron, St. Peter Port, Guernsey.	D.H. 1942-4
Lewis, Mrs. D. (nee R. V. Soar)	....	Dolfedwin, Tresaith, Cardigan, S. Wales.	D.D. 1939-41
Lievesley, T.	....	Bleak House, Ringer Lane, Clowne, near Chesterfield.	D.A. 1942-4
*Linsell, Miss A. J.	....	The Cross Green, Rothley, near Leicester.	C.D. 1945-6
*Lock, G. W.	....	Sisal Experimental Station, Ngomeni, Tanga, T.T.	D.A., C.D. 1922-5
Lomax, Mrs. E. B. (nee D. MacFadzean)	....	Willaston Hall, Nantwich, Staff Cheshire.	
*Lomax, Miss K. L.	....	H.A.A.C. Newport, Salop.	D.D., C.A. C.P. 1917-20
*Lowe, Miss E. A.	....	The Beeches, Huthwaite, Notts.	C.P., C.D. 1930-3
Lumby, J.	....	Town Farm, Donington, Spalding, Lincs.	D.A. 1942-4



MacKinnon, P. D. ....	111 Musters Road, West Bridgeford.	Staff
Machin, Miss R. ....	Lumilo, Leek Road, Congleton, Cheshire.	D.D. 1943-5
*Makings, Dr. S. M. ....	Dept. of Agriculture & Lands, P.O. Box 387, Salisbury, S. Rhodesia.	D.A. Staff 1922-5, 26-46
*Mantle, R. G. ....	<i>Address unknown.</i>	C.A. 1922-3
*Mantle, D. W. S. ....	Yew Tree House, Langham, Oakham.	C.A. 1941-2
*Marsden, J. M. ....	County Offices, Lincoln.	D.A., D.D. 1935-8
*Marsh, Miss P. A. ....	Cragburn, Holly Park, Huby, Leeds.	D.A. 1942-4
*Marston, Miss M. E. ....	School of Agriculture, Sutton Bonington.	D.H. 1942-4
*Martin, J. M. ....	Kirklands, Kirkoswald, Maybole, Ayrshire.	C.D., C.A. 1921-3
*Martin, S. F. ....	Hungary Lane, Sutton Bonington.	D.D. 1933-5 Staff 1936-45
Martyr, F. R. ....	School of Agriculture.	Staff
*Mathews, J. C. ....	Staffordshire Farm Institute, Penkridge, Staffs.	D.A., D.D. 1933-7
*Maw, D. R. ....	Harbardon, Wharfe Road, Crowle, near Scunthorpe.	D.A. 1934-6
Mendham, R. H. ....	Hunters Chase, Foxash Estate, Rawford, Manningtree, Essex.	D.P. 46-8
Mettham, J. M. ....	The Cottage, Barrowby Road, Grantham, Lincs.	D.H., C.H. 1937-9
*Middleton, Ven. Archdeacon S. H. ....	St. Paul's Residential School, Cardston, Alberta, Canada.	1904-5
Middleton, C. R. ....	42 Park Street, Worksop, Notts.	D.H. 1942-44
Mills, J. A. ....	2 Manor Court, Bramcote, Notts.	D.A. 1943-5
Milner, G. H. ....	Silverlands Farm, Fishpool, Nr. Mansfield.	C.A. 1933-4
*Milburn, R. B. ....	5 Edward Avenue, Westland, Newcastle, Staffs.	1930-1
Mollart, G. T. ....	Home Farm, Winkburn, Kirklington, Notts.	D.A. 1943-5
*Moore, A. B. ....	Manor Farm, Ab Kettleby, Melton Mowbray.	C.A., C.D. 1926-8
*Morgan, T. A. L. ....	4 Shoot-up-Hill, Brondesbury, N.W.2.	D.A. 1942-4
*Moor, A. D. ....	34 Victoria Walk, Horsforth, Leeds.	D.A. 1935-8
Moore, M. J. ....	Moorfield Nursery, Peterborough Road, Eye, Nr. Peterborough.	D.H. 1944-6
Morley, Miss J. E. ....	165 Hinckley Road, Leicester.	D.D. 1946-8
*Mould, Miss P. A. ....	Old Meadows, Wergs Road, Tettenhall, Staffs.	D.D. 1944-6
*Mumford, D. R. ....	35 Holmfield Road, Stoneygate, Leicester.	D.A. 1943-5
*McArthur, Miss F. I. ....	9 Rickfords Hill, Aylesbury, Bucks.	C.D., D.D. 1922-6
*McMinn, Miss C. C. ....	<i>Address unknown.</i>	C.P. 1924-5
Neale, Miss A. ....	Kneeton, Notts.	D.H., C.P. 1942-5
Nelstrop, Miss E. J. ....	The Old Hall, Leadenham, Lincoln.	D.P. 1944-6
Newbury, Miss M. S. ....	The Three Hands, Teffont, Salisbury.	D.P. 1946-8
Newton Miss E. ....	252 Highfield Road, Hall Green, Birmingham. 28.	Deg. A.G. 1945-8
*Nield, Miss D. ....	The Knob, Aston-on-Trent, Ashbourne, Derbys.	C.D. 1924-5
*Noakes, Mrs. G. (nee Read) ....	Holly Grange, Bramshall, Uttoxeter.	C.D. 1930-31
*Norman, R. F. ....	Dept. Agric. Engineering, Kings College, Newcastle-on-Tyne.	Deg. A.G. 1946-8
*Norman, Miss D. M. ....	Pangotta, Station Road, Haddington, E. Lothian.	C.A. 1918-9
*Nourish, W. H. ....	16 Apers Avenue, Woking, Surrey.	C.H. 1931-2
*Nowill, Miss A. C. ....	Manor Hill House, Worksop, Notts.	D.D. 1938-40

Nutt, Miss N. M. ....	44 Alexandra Road, Winshill, Burton-on-Trent.	D.H. 1946-8
*Oliver, J. P. ....	47 South Street, Ilkeston.	D.A. 1936-8
*Osborne, A. T. ....	Merriefields, Nethermoor, Wingerworth, Chesterfield.	F. P., D.A. 1937-40
*Osborne, F. ....	37 Dalston Lane, Dalston, London, N.1.	C.H. 1937-8
Osborne, Miss C. W. ....	The Rectory, Claxby, Lincoln.	D.D. 1946-8
*Owen Miss M. H. ....	35 Osborne Road, Jesmond, Newcastle-on-Tyne.	D.P. 1925-6
*Parsonage, J. ....	Oak Croft, Malpas, Cheshire.	D.D. 1912-4
*Parker, P. F. ....	Kinoulton Grange, Hickling, Melton Mowbray.	1942-3
*Parker, J. H. ....	<i>Address unknown.</i>	1917-8
*Peacock, Miss J. ....	Old Treworgey, Liskeard, Cornwall.	D.D. 1942-4
*Peacock, Miss D. M. ....	Institute of Agriculture, Oaklands, St. Albans	D.D., D.P. 1920-3
*Pepper, J. H. ....	West Leake, Loughborough.	C.A. 1941-2
*Pickworth, H. B. ....	Pickering Grange, Ellistown, Leicester.	C.D. 1915
Piercy, H. J. B. ....	The Old Rectory, Dumbleton, near Evesham, Worcs.	D.H. 1945-7
*Plaskitt, H. S. ....	Church Farm, Croft, Leics.	C.A. 1938-9
*Plumb, E. J. ....	South Houghton Farm, Heddon-on-the-Wall, Newcastle-on-Tyne.	D.A. 1942-4
*Poore, Miss A. ....	Barton House, Tetbury, Glos.	D.D. 1944-6
*Pope, J. R. ....	17 Hillrise Avenue, Braunstone, Leics.	D.A. 1940-2
Porter, F. W. ....	Anchor Inn, Oakerthorpe, Derby.	D.D. 1937-9
*Pritchard, Miss A. A. ....	Grassendale, Piers Close, Malvern,	Staff 1923-46
*Prince, D. ....	Sapperton Manor, Church Broughton, Derbys	1914-18
*Prince, Miss G. ....	Institute of Agriculture, Usk, Mon.	Matron 1925-7
*Proffit, G. H. ....	Shire Hall, Bedford.	D.D. 1932-4
Quarmby, J. ....	Upper Surinalle Estate, Surinalle, S India.	D.A. 1944-6
*Quick, A. J. ....	40 Amphthill Road, Bedford.	D.D. 1941-3
*Ralph-Smith, Mrs. S. T. (nee B. Wright) ....	25 Cavendish Road East, The Park, Nottingham.	C.P. 1930-1
*Ramsbottom, A. T. S. ....	102 Horsham Avenue, Kinson, Bournemouth.	D.A. 1944-6
*Rash, C. D. ....	Felmingham Hall, N. Walsham, Norfolk.	C.A. 1935-6
*Rayns, F. ....	Norfolk Agricultural Station, Sprowston, Norwich.	D.A. 1910-2
*Read, Miss J. ....	Pinfold, Poulton-le-Fylde, Lancs.	D.P. 1943-5
*Reed, R. C. ....	Lubnam Lodge Farm, Market Harbor- ough.	D.D. 1936-8
*Revill, A. E. ....	Warp Farm, Blyton Carr, Gainsborough.	C.A. 1921-2
Richards, Mrs. A. N. (nee Glossop) ....	3 Gibfield Lane, Belper, Derbys	D.D. 1937-9 Staff 1940-2
*Richardson, Miss. J. R. ....	Diamonds Farm, Horam, Sussex. E.	D.D. 1944-6
Riley Mrs W. F. ....	Burton Latimer Hall, Kettering, Northants.	D.D. 1946-8
*Riley, W. D. ....	Elmwood, Clay Street, Stapenhill, Burton-on-Trent.	D.A. 1941-3
*Roberts, C. W. ....	23, Penrith Avenue, Giffnock, Glasgow.	D.A. 1919-23
*Roberts, Mrs. C. W. (nee E. M. Peacock) ....	98 Wolmer Gardens, Edgware, Mdx.	C.P. 1920
*Roberts Miss D. ....	High Gable, Park Lane, Congleton, Cheshire	D.D. 1944-6
*Roberts, Miss N. A. ....	Hillside, Bigelly, Kilgetty, Pembrokeshire.	D.D. 1944-6
Robey, Miss M. S. ....	Wingate, Thanet Street, Clay Cross, Chesterfield.	C.P. 1939-40



*Robinson, Prof. H. G.	School of Agriculture, Sutton Bonington.	Principal, Mid. Ag. Coll. D.A. 1942-43
*Robinson, W. J.	Hainby Farm, Barway, Ely, Cambs.	D.D. 1944-5
*Rogers, Miss B. R.	50 County Road, March, Cambs.	C.A. 1933-4
Rollett, J. H. B.	Bull Farm Cottage, Herriard, Nr. Basingstoke.	C.A. 1942-3
*Rout, J. F. G.	Rosary Cottage, Banham, Norwich.	C.A., D.P. 1933-7
*Rowland, J. W.	Caythorpe Court, Grantham, Lincs.	C.A. 1921-2
*Russell, G. H.	77 Wilderness Road, Erleigh, Reading.	D.H. 1942-4
Salsbury, Miss E.	Milton Road, Repton, Derbys.	C.P. 1936-7
*Sargent, Miss J. C.	41 Hartington Street, Derby.	D.D. 1946-8
Saward, Miss B.	Hilcot South Elkington, Louth.	D.A., D.D. 1929-31
*Scott, R.	School of Agriculture, Sutton Bonington.	Staff 1920-3
*Scrivener, F. L. C.	Training College, Cumberland St., Dunedin, N.Z.	C.P. 1919-20
*Selby, Mrs. E. R.	Farnborough Lodge, Lock's Bottom, Farn- borough, Kent.	Deg.A. 1945-7
Sewell, Miss S. J.	5 Corby Road, Mapperley, Nottingham.	C.D. 1928
*Sharpe, Miss K. M.	Lillington, Sherbourne, Dorset.	C.A., C.D. 1944-5
Sharples, Miss B. M.	22 Cherrington Road, Cheadle, Cheshire.	D.A. 1934-6
*Shaw, J. F.	Tara, Morrend, Holme-on-Spalding Moor, York.	Staff 1922
*Shaw, R. Burt	School of Agriculture, Sutton Bonington.	Deg. Ag. 1946-8
Shepherd, G. M.	Park Lane Farm, Sutton Bonington.	D.D. 1944-6
*Shepherd, Miss J.	13 Chaucer Terrace, Grantham.	D.D. 1919-20
*Shepherd, Miss A.	4 Christchurch Gardens, Reading Berks.	D.H. 1946-8
Shorten, P. A.	Somerleyton Hall, Lowestoft	D.D. 1940-2
*Shucksmith J. L.	19 Hartsholme Drive, Swanpool, Lincoln.	F.P., D.P. 1936-9
Siddall, F.	The Manor, Cantley, Norfolk.	C.A., C.H. 1927
*Simpson, G.	East Flotmanby Filey, E. Yorks.	C.P. 1929-30
*Simpson, M. M.	Trinity College Farm, Barnby Moor, Retford, Notts.	D.D. 1919-20
*Singh, S. Bahudar, S. Datur	Armada, Cottage, Simla, E. India.	C.A., C.P. 1925-7
*Singleton, A. E.	Grange Farm, Oxtou, Newark, Notts.	C.A. 1924-6
*Slaney, H. J.	Estate Office, Langham, Oakham.	D.A. 1936-8
Slater, R. J.	Hall Farm, Otley, Ipswich.	C.A., C.D. 1924-6
*Smith, H. C.	c/o Director of Vet. Service, Murapwa, Tanganyika, E. Africa.	D.A. 1942-44
*Smith, R. S.	Park Farm, Harlestone, Northants.	D.P. 1942-4
*Smith, Mrs. R. S. (nee M. E. Green)	Park Farm, Harlestone, Northants.	D.D. 1927-30
*Smith, Miss S. M. L.	Area Laboratory, Spencer Street, Leamington Spa.	D.A., D.D. 1919-22
*Solomon, J.	107 Doncaster Road, Scunthorpe.	D.A. 1922-4
*Sommerfelt, W.	Address unknown.	C.A. 1940
*Southwood, J. G.	Hall Farm, Little Dalby, Melton Mowbray.	D.A., D.D. 1933-6
*Sowerby, F. J.	St. Martha's, Kingsley Avenue, Daventry, Northants.	C.A. 1922-3
*Spurr, G. E.	Address unknown.	Staff 1940-6
*Squibbs, Mrs. F. (nee N. Roper)	Athalassa, Cyprus.	

*Stanger, C. A.	The Five Oaks Farm, Stanford-on-Soar, Loughborough.	D.D. 1931-3
*Sterland, Mrs. G. M. (nee I. R. Atkinson)	Amberside, Pentrich, Derby.	C.P., C.D. 1924-5
*Sterland, T.	Sharrington Hall, Melton Constable, Norfolk	C.A. 1924-5
*Stevens, A. H.	Address unknown.	D.A. 1943-5
Stewart, Miss E. M.	Wistow Grange, Newton Harcourt, near Leicester.	D.A., F.P. 1943-6
*Strawson, G.	Low Brecks Farm, E. Markham, Newark.	C.A. 1928.
*Strawson, H. M.	c/o Vet. Dept., Mpapwa, Tanganyika Territory, E. Africa.	D.A., D.D. 1936-9
*Stretton, F.	The Shire Hall, Bedford.	C.P., C.D. 1934-6
*Stringfellow, F.	4 Heath Avenue, Mansfield.	D.D. 1920-2
*Stroude, H. K.	Home Farm, Longstanton, Cambs.	C.A. 1927-8
*Sturgess, C. R. H.	Townwell, Credenhill, Hereford.	F.P., D.A., D.D. 1925-8
*Sumners, M. H.	3 The Grove, Coates, Barnoldswick, via Colne, Lancs.	D.D. 1925-7
*Sutton, Mrs. W. D. (nee M. Lewis)	Address unknown.	C.P. 1924-5
*Smethurst, Mrs. (nee J. Sykes)	Harwood Farm, Anstry, Salisbury.	D.P. 1939-40
Tansey, A. W.	17 Edward Avenue, Jacksdales, Notts.	Deg. Ag. 1946-48
*Tasker, N. E.	28 Augusta Street, Grimsby.	D.D. 1942-4
*Taylor, A.	Agriculture Dept., Moshi, Tanganyika Territory, E. Africa.	C.A. 1922-3
*Taylor, A. S.	Bulb Gardens and Farm, Tresco, Isle of Scilly, Cornwall.	C.A. 1928-9
Taylor, Mrs. (nee Kilpayrick)	Goland Brae, Yewland, Chesterfield.	S.C.H. 1941
Taylor, H. P.	Oak Hill College, Southgate, London. N.14.	D.H.
*Forshaw-Taylor, Miss M.	140 Dalston Road, Carlisle.	D.D. 1915-6
*Thomas, D. M.	Address unknown.	C.D. 1929
Thompson, Miss J. V.	Thornfield House, Old Chilwell, Notts.	D.H. 1944-6
*Thompson, R. W.	Water Farm, Rushington, Sleaford, Lincs.	D.A. 1943-5
*Thompson, Mrs. C. B. (nee M. Haslam)	Lawnside, Duffield Road, Derby.	F.P., D.D. 1936-8
Thompson, K. J.	133 Newark Av. Peterborough.	D.A. 1944-6
Thompson, H. P.	The Bower, Crich Common, Nr, Matlock.	D.A. 1946-8
*Thompson, L. A.	Native Affairs Dept., P.O. Box 61, Gwanda, S. Rhodesia.	D.A.
*Thurlow, Mrs. J. G. (nee B. Wall)	Atherstone, Bindura, Rhodesia.	D.D. 1921-3
Townsend, Miss, L. M.	St. Malo, Station Road, Scholes, Leeds.	D.H. 1944-6
Trask, Miss R.	31 Walmsley Rd., Broadstairs, Kent.	D.H. 1946-8
*Treble, A. R.	Caythorpe Court, Grantham.	D.A. 1934-37
*Trezise, Mrs. K. (nee K. Elliot)	Alton Newquay Road, Truro, Cornwall.	Staff 1924.
Turner, P. J.	Woodley Hall, Faddiley, Nantwich.	D.A. 1943-5
*Turner, G.	Bassett Farm, Upper Langwith, near Mansfield, Notts.	C.A. 1937-8
*Tyler, P. W. S.	Brevick House, Southrepps, Norwich.	C.A. 1944-5
Topham, J. B.	6 Cramworth Grove, Sherwood, Nottingham	C.H. 1938-9
*Usher, Mrs. E. W. (nee M. G. Spurr)	48 Monksmoor Road, Shrews- bury.	C.P. 1928-9
Venner, Mrs. M. E. (nee B. M. Alvey)	Main Royal, Combwich, Bridgwater, Somerset.	C.P. 1935-6
*Vincent Mrs. M. M. (nee M. Bacon)	35 Gallohill Rd., Carmunnock, Glasgow.	D.P. 1940-42



*Walbank, A.	.....	Columbine Farm, Dale Abbey, Ilkeston.	D.D. 1938-40
*Wale, Mrs. A. H. (nee M. Osborne)	.....	Brockhurst, Monks Kirby, Rugby.	C.D. 1929-30
*Walker, P.	.....	Crosshills, Hartshead, Liversedge, Yorks.	C.D., D.D. 1935-7
*Walker, Miss M. G. R.	.....	The Orchard House, Thorpe Road, Peterborough.	D.D. 1946-8
Walsh, Miss J.	.....	Newton Hall, Newton, Cambridge.	C.P. 1946-8
*Ward, K. W.	.....	156 Perry Road, Sherwood, Nottingham.	D.P. 1946-8
*Warrener, H. M.	.....	Holbeck Hall Farm, near Welbeck, Worsop.	D.A. 1944-6
*Wassell, H. R.	.....	Claremont, Derby Road, Sandiacre, Notts.	C.P. 1942-3
*Waters, C. R.	.....	Red House, Church Street, Market Bosworth D.A., D.D.	1935-40
Watson, G. D.	.....	Mimosa, Nyetimber Lane, Bognor Regis.	C.H. 1943-4
*Waud, L. M.	.....	Star House Farm, Taddington, Buxton.	D.A. 1938-40
*Webster, G. W.	.....	Address unknown.	C.A., C.P. 1927-8
*Wells, J. E.	.....	Demeter, Wraxall, Bristol.	D.A. 1920
Weston, P. C.	.....	Church Farm, Dembleby, Sleaford, Lincs.	D.A. 1943-5
*Weston, R. A.	.....	c/o Braeside, Mead Road, Cranleigh, Surrey.	D.A. 1942-4
*Wetton, D.	.....	Warwick House, 47 Stoneleigh Avenue, Coventry.	D.H. 1943-4
*Wharmby, Mrs. R. (nee P. Madders)	.....	Address unknown.	D.D. 1925-7
Wheelhouse, Miss M.	.....	Thornhill Farm, Wath-on-Deerne, Rotherham.	D.D. 1945-7
*White, A.	.....	203, Green Lanes, Wylde Green, Sutton Coldfield, Warwickshire.	C.D. 1926-7
*Whitworth, J. W.	.....	10 Pakenham Rd., Edgebaston, Rd., Birmingham, 15.	C.H. 1940-42
Whitworth, Miss E.	.....	The Close, Bridge Road, Lytham St. Annes.	D.H. 1946-8
*Wigley, Miss A. E. D.	.....	Lodge Farm, New Houghton, Mansfield, Notts.	C.P., D.D. 1939-40
*Wilkinson, J. R.	.....	Lower White Carr Farm, Whalley, near Blackburn.	F.P., D.A. 1943-6
*Wilkinson, G. W.	.....	Saxonbury, Rake Lane, Eccleston, near Chester.	C.A. Staff 1920-3, 26-9
*Williams, S.	.....	Magadale Farm, Thurgarton, Newark, Notts.	Staff.
*Williams, Miss J.	.....	Brock Hill Farm, Hose, Melton Mowbray.	P. & D. 1943-4
*Wilmot, Miss J. A.	.....	White House Farm, Newton-on-Trent.	D.D.
*Wilson, Miss G.	.....	226 Avenue Parade, Accrington, Lancs.	D.A., D.D. 1944-7
Wiltshire Miss J.	.....	192 Derby Road, Beeston, Notts.	D.H. 1946-8
Winson, V. M.	.....	c/o Turner, Home Farm, Brailsford.	D.A. 1946-8
*Wittering, S. C.	.....	c/o M. E. Hubbard, London Road, Shardlow, Derby.	D.A. 1943-5
*Wood, Miss D.	.....	21 Park View, Cleethorpes, Lincs.	D.D. 1938-40
*Wood, Miss H. S.	.....	The Grove Farm, Epperstone, Notts.	C.D., D.D. 1904-6
*Wood, S.	.....	Tebbutts Farm, Normanton-on-Soar.	C.A., C.P. 1940-1
*Woodall, W.	.....	Crich, Midford Road, Combe Down, Bath, Somerset.	
Woodford, J. H.	.....	Manor Farm, Gracedieu, Coalville.	C.A. 1944-5
Woodward, B. A.	.....	6 Herbert Road, Sherwood Rise, Nottingham.	Deg.A. 1944-6
Wyman, A. G.	.....	Shardlow Hall, Shardlow, Derby.	D.D. 1946-8
Wheatley, J. C.	.....	Clifton Thorpe, Ashby-de-le-Zouch.	D.A. 1925-7
*Young, C. S.	.....	South Owersby House, South Owersby, Lincoln.	D.A. 1943-5

## UNIVERSITY COLLEGE NOTTINGHAM—SCHOOL OF AGRICULTURE

## STUDENT LIST.

Session Commencing 8th October, 1948.

## DIPLOMA IN AGRICULTURE—YEAR 1.

Albone, George Edward	.....	Glebe House, Spridlington, Lincs.
Barton, Keith George	.....	2 The Carlton, St. John's Road, Buxton, Derbys.
Brown, Lionel Macleish	.....	"Gowrie", Cudlow Avenue, Rustington, Littlehampton, Sussex.
Brummage, Alan James	.....	1 Newtown, Thetford, Norfolk.
Chorlton, Anthony Derrick	.....	Falcon House, Hoton, Nr. Loughborough.
Claxton, Norman Edward	.....	Station Road, Thetford, Norfolk.
Davison, Derek Alan	.....	13 Cedar Avenue, Birstall, Leicester.
Duffin, Roy	.....	5 North Road, Sleaford.
Gibbon, Alan Wilfred	.....	55 Victoria Street, Newark-on-Trent.
Holt, Roger Clifford	.....	33 Westfield Drive, Loughborough.
Horspool, George David	.....	3 Garton Road, Loughborough.
Hudson, Charles Martin	.....	"Winona", Horsell Rise, Woking, Surrey.
Longdon, David	.....	"Westwood", West Park Road, Derby.
Markham, John Godfrey	.....	"Windyridge", Burton-on-Stather, Scunthorpe.
Mackay, Alexander	.....	47, Dudley Road, Grantham.
Meeklah, Francis Allen	.....	"Whitehouse", Oakdale Road, Carlton, Notts.
McKerrow, John Charles	.....	30, Curwen Street, Workington, Cumberland.
Newenham, William Percy	.....	Coolmore, Carrigaline, Co. Cork, Eire.
Worth,	.....	
Ritson, David Edward	.....	10, South Grove, Highgate, London, N.6.
Roberson, John Luddington,	.....	Abbey House, Thetford, Norfolk.
Staniford, Thomas George	.....	Styles Place, Brockthorpe, Glos.
Stonham, Gordon Henry	.....	South View Dairy, Boughton, Faversham, Kent.
Taverner, Edward Nigel	.....	6 West Acridge, Barton-on-Humber, Lincs.
Thompson, Eric Norman	.....	140 Christchurch Road, Norwich.
Thompson, George	.....	"Waverley", Newark Road, N. Hykeham, Lincoln.
Wakeford, Thomas	.....	Butt Lane, Normanton-on-Soar, Loughborough.
LeMaitre,	.....	
Wallis, Hugh Stanley	.....	Vanbrugh House, Attenborough, Nottingham.
Astle,	.....	
Whitton, Stuart W.	.....	Manor Farm, Snarford, Market Rasen, Lincs.

## DIPLOMA IN AGRICULTURE—YEAR 2.

Allsebrook, Barbara	.....	Moat Farm, Loughborough, Leics.
Barrett, Steven Charles	.....	21 Norton Way North, Letchworth, Herts.
Burton, Mark Andrew	.....	53 Friar Lane, Nottingham.
Calder, Alexander	.....	46 Carr Lane, Acomb, Yorks.
Coulthurst, James	.....	Manor House, West Halkon, Scunthorpe, Lincs.
Donaldson, Jas. Reginald	.....	Dalswinton, Mansewood Road, Glasgow, S.3.
Caldwell,	.....	
Harrison, David Walter	.....	Manor House, Heighington, Lincoln.
Harpham, Herbert Wright	.....	"The Nook", Marton, Gainsborough, Lincs.
Hendon, Cyril Douglas	.....	22 Tennyson Road, Wimbledon, S.W. 19.
Herring, Robert Raymond	.....	"The Retreat", Shatfisbury, Dorset.
Jenkins, Chas. Fred Benton	.....	64 West Smithfield, London, E.C.1.
Lee, Robert William	.....	34 Brancaster Drive, Lincoln.
Lowry, George Edward	.....	Stanley Farm, New Longton, Nr. Preston.
Mead, M. Seymour	.....	Edenhall, Penrith, Cumberland.
Nicholson, James Harry	.....	Northwick Hotel, Evesham, Worcs.
Oakes, David Rees	.....	Hippisley Farm, Chewton Mendip, Nr. Bath.
Osborne, Thos. Mackenzie	.....	55A, Clarendon Road, Watford, Herts.



Porter, John Edward .... "The Pastures", Normanton-on-Cliff, Grantham, Lincs.  
 Smith, John Bolton .... 32 Bodnant Avenue, Leicester.  
 Sutton, John Michael .... "Kentucky", Willesley Park, Ashby-de-la-Zouch, Leics.  
 Shepherd, Thos. Albert .... Park Lane Farm, Sutton Bonington, Loughboro.  
 Wellington, Robert James .... "Colescus", Gorran Haven, St. Austell, Cornwall.

#### DEGREE IN AGRICULTURE—YEAR 2.

Arar, Abdullah Abdir-Razig, .... 74 Victoria Road, Sherwood, Nottingham.  
 Barker, H. .... Seagrave Grange, Barrow-on-Soar, Loughborough.  
 Bedford, Patricia May .... Dalton Magna, Hagley Road, Pedmore, Stourbridge.  
 Blake, Philip Walter, .... 46 Chevinedge Crescent, Exley, Halifax, Yorks.  
 Bowers, Richard Dixon .... Glebe Farm, North Peckenhams, Swaffham, Norfolk.  
 Clement, Conway Rathbone .... 31 Ridgeway Road, Fishponds, Bristol.  
 Collins, Leslie, .... 119 Clee Road, Cleethorpes, Lincs.  
 Dixon, Thos. William .... The Green, Sedbergh, Yorks.  
 Guttridge, David Geo. .... "Barnsway", Love Lane, Kings Langley, Herts. Ashley,  
 Horrell, Charles Richard .... "Sarum", Upper Road, Meole Brace, Shrewsbury.  
 Lockhart, Thos. Clement .... 112 Tichill Road, Balby, Doncaster.  
 Neilson, Hugh Ross .... "Peveril", 23 Highview, Pinner, Middlesex.  
 Pebody, Judith Mary .... Kilwick, Stoke Bruerne, Towcester, Northants.  
 Poole, Olive Margaret, .... Sunnycroft, Raunds, Northants.  
 Rivett Alan David .... Cokesford Farm, Tittleshall, King's Lynn, Norfolk.  
 Robinson, Elizabeth Mary .... 20 Cellarhill Terrace, Grasswell, Houghton-le-Spring, Co. Durham.  
 Scott, Christine.... .... Greencroft, Great Strickland, Penrith, Cumberland  
 Scott, Cora Hazel Eliot .... 64 Underdale Road, Shrewsbury, Salop.  
 Stubble, Dora Mary .... High Street, Boston, Lincs.  
 Tibbits, Janet Prudence .... 1 Arboretum Street, Nottingham.  
 Unsworth, Sidney .... 9 Townfield's Avenue, Ashton-in-Makerfield, Lancs.  
 Wilson, Alice Eliz. Dudley .... Pool Close, Alvechurch, Worcs.  
 Wright, Edith Margaret, .... 46 Forest Road, Loughborough.  
 Young, Kathleen Elizabeth .... Aghenloo House, Bellarena, Co. Derry, N.Ireland

#### DEGREE IN AGRICULTURE—YEAR 3.

Adams, Maurice Robert .... Quantock Farm, Enmore, Bridgwater.  
 Barker, Henry Francis.... .... 1a, Magdala Road, Mapperley Park, Nottingham.  
 Black, Cyril James .... 28, Gorsey Road, Nottingham.  
 Clements, Harry Arthur, .... 7 Woodthorpe Avenue, Loughborough, Leics. Bruce,  
 Cowlshaw, Stuart John .... "Bramfield", 400, Burton Road, Derby.  
 Darby, Hugh Jonathan .... 111 George Borrow Road, Borwich, Norfolk. N Mitchell,  
 Davies, Arthur Eric .... 3 Wordsworth Drive, Sheffield, 5.  
 Gosden, Peter Norman.... .... Downs View, 9 Brayton Avenue, Brighton.  
 Graham, David .... 12 Nuttall Avenue, Horwich, Nr. Bolton.  
 Hendon, Daphne May .... 17 Chesham Avenue, Bromley, Kent.  
 Humberstone, Judith M., .... Chandlers, Ashton on Hill, Nr. Evesham, Worcs.  
 Jacobs, Charles Ronald .... 24 Station Road, Whittlesey, Nr. Peterborough.  
 Johnson Alwyn Guy, .... Fairlea, Grange Street, Alfreton, Derby.  
 Manners, Michael Jackson .... 70 Bury Old Road, Kirkhams, Prestwich, Manchester.

Marples, Herbert I. S. .... Riddings Farm, Curbar, nr. Sheffield.  
 Shemilt, Harold James, .... Shawgate Farm, Foxs, Nr. Froghall, Stoke-on-Trent.  
 Teesdale, Mary Rees .... Copthill, Uffington, Nr. Stamford, Lincs.  
 Thomas, Wendy Haigh .... 9 Princess Road, Dronfield, Sheffield.  
 Vale, Trevor Woolaston, .... Wellesbourne, Warwick.  
 Williams, Stephen Morris .... "Broadstone", Craven Arms, Shropshire.  
 Willmott, Michael John .... Moon Acre, Newlands Close West, Hitchin, Herts.

#### DIPLOMA IN DAIRYING—YEAR 1.

Channon, John Colin Spain .... Grinkle Lodge, Easington, Loftus, Yorks.  
 El Hofi, Abdel Hamid Ali c/o The Director, Egyptian Education Bureau, 4 Chesterfield Gardens, Park Lane, London. W.1.  
 Franklin, Christine Amy .... 4 Brookside, Headington, Oxford.  
 Grant, Ian Spencer Dipple .... 55 High Street, Totnes, S. Devon.  
 Hunter Jean, .... Westwood Farm, Wylam-on-Tyne.  
 Jessop, Margaret Joyce, .... "The Poplars", Rippingale, nr. Bourne, Lincs.  
 Kirby, Elizabeth April .... "Meccaf", St. Mary's Road, Frinton-on-Sea, Essex.  
 Mabey, Stewart Edwin, .... 50a, Grove Hill Road, Tunbridge Wells, Kent.  
 Payne, Michael Ashby .... The Queen's Head, Harston, Cambs.  
 Rooke, Mary Elizabeth, .... Station House, Gailey, Stafford.  
 Regina,  
 Sanville, Christopher, .... Brow Cottage, Bollin Hill, Wilmslow, Nr. Manchester.  
 Spalton, Peter Arthur .... 157 Station St., Burton-on-Trent, Staffs.  
 Thompson, Judith Anne .... The Old Rectory, Brooksby, Melton Mowbray.  
 Freaschville,  
 Treneman, Nora Mary .... 6 Heath Terrace, Leamington Spa, Warwicks.  
 Dafne,  
 Trethewey, Kathrin Moira .... Dursley, Horrabridge, Nr. Telford, Devon.  
 Twiss, Patricia Ann .... 29 Elmside, Onslow Village, Guildford, Surrey.  
 Wells, John Raymond .... New Farm, Lee, Ellesmere, Shropshire.  
 Wilson, Joan Helena .... 244 Rochdale Road, Halifax, Yorks.

#### DIPLOMA IN DAIRYING—YEAR 2.

Abbott, Marjorie Ethel .... 92 Beaconsfield Road, Nottingham, London, S.E.9  
 Akers, Norman Thomas .... 128 Honey Lane, Waltham Abbey, Essex.  
 Allen, Derek Wallace .... Burrough Road, Sowerby, Melton Mowbray.  
 Betts, Mary Aimee .... Bush End Vicarage, Takeley, Bishop's Stortford, Herts.  
 Bright, Joseph Charles .... 114 Snelthorpe Road, Loughborough.  
 Clack, Barbara .... 116 Fulton Road, Walkley, Sheffield, Yorks.  
 Cooper, Margaret Heather .... 10 Hawthorn Road, Ribblesdale, Preston.  
 Coverley, Pamela Mary .... "The Pines", Irlam Road, Flixton, Lancs.  
 Gibbons, Jean Mary .... The Beam House, Tetterhall, Staffs.  
 Hamilton, Kathleen Mary .... Pynford Vicarage, Nr. Woking, Surrey.  
 Hawke, Jean .... Treesmill Farm, Par, Cornwall.  
 Hurst, Gillian Dorothy .... 320 Brampton Road, Bexleyheath, Kent.  
 Leggett, Helen Patricia .... 47, Aldenham Avenue, Radlett, Herts.  
 Loynes, Beryl Mary .... Bawburgh Hall, Nr. Norwich, Norfolk.  
 Lumley, Margaret Ann .... Manor Farm, East Heslerton, Malton, Yorks.  
 Mitchelhill, Sheena Mary .... Portland House, Broadway, Duffield, Derbys.  
 Mitton, Primrose Ann .... Dovecote, Ashover, Nr. Chesterfield, Derbys.  
 Petty, Patricia Stephanie .... Castle Farm, Thorpe, Aldwinckle, Kettering.  
 Powell, Rosemary Joyce .... 150a, Claphill Road, Maulden, Bedford.  
 Stapleton, Simmuel Clisby, .... 8 Brookfield Drive, Fulwood, Nr. Preston, Lancs.  
 Walker, Muriel, .... Strickley, Old Hutton, Kendal.  
 Warman, Arline Mary .... "Merlewood", 14 Redgate Drive, Hayes.  
 Wentworth, Sheila Mary .... "Hatherlow", 55 Torkington Road, Gateley, Cheshire.  
 Wibberley, Beryl Jean.... .... 26 Haslin Cottages, Harpur Hill, Buxton.



#### DIPLOMA IN HORTICULTURE—YEAR 1.

Beardall, Constance	.....	"Heathdale", Parkside, Wollaton, Nottingham.
Heather,		
Brooke, Pamela Elizabeth		785, Hertford Road, Enfield.
Care, Marion Esther	.....	184 Byron Road, Harrow Weald, Harrow.
Creaser, Patricia Mary		"The Grange", Carlton, Goole.
Farrington, Sidney	.....	24 Whitfield Avenue, Westlands, Newcastle, Staffs.
Flack, Richard Francis,		"Brookroyd", 1 Ernle Road, Wimbledon, S.W.20
Forster, Antonia Rae	.....	20 Portland Avenue, Grimsby, Lincs.
Green, James Alec Johnson		"The Walnuts", 8 The Avenue, March, Cambs.
Greenwood, Alfred Eric		23 Cornwall Road, Stamford, Lincs.
Hawke, John Alexander		40 Valkyrie Road, Westcliff-on-Sea, Essex.
Limb, Philip Geoffrey	.....	77 Empire Road, Sheffield, 7.
Nicholson, John Brian		"The Limes", Saxilby, Lincoln.
Norton, Geoffrey	.....	"Uplands", Stoke Pound, Nr. Bromsgrove, Worcs.
Parker, Harry Hook	.....	522 Devonshire Road, Bispham, Blackpool.
Russell, Brian	.....	"Cicestra", 126 Yarborough Road, Grimsby, Lincs
Saunders, Owen J.	.....	41 Ilkeston Road, Bramcote, Notts.
Spence, James Colin	.....	15 Gloucester Place, Edinburgh, 3.
Tennent, Paul H.		6 Pierrepont Road, Acton, W.3.
Wallis, John Anthony		2 Marlborough Road, Long Eaton.

#### DIPLOMA IN HORTICULTURE—YEAR 2.

Adamson, Barbara Joyce		474 Holdenhurst Road, Bournemouth, Hants.
Bashford, Paul C. M.	.....	The Vicarage, Hillingdon, Middlesex.
Close, Margaret Crossley		"Belcrouse", Newfield Drive, Menston, Nr. Leeds.
Fletcher, Nora Eileen	.....	"Twylford", Smalley Hill, Heanor, Nottingham.
Herbert, Trevor John	.....	Springwell House, High Street, Kegworth.
Iddon, Dennis James	.....	41 Glebe Avenue, Enfield, Middlesex.
Ingram, John	.....	5 Rothwell Road, Desborough, Nr. Kettering, Northants.
Kitwood, Frank	.....	20 Market Place, Howden, E Yorks.
Little, Denzil Arthur James		25 Lannoweth Road, Penzance, Cornwall.
Pearn, Arthur Thomas		Cemetery Lodge, Penarth, Glamorgan.
Rybolowicz, Olga Maria		Long Whatton Rectory, Nr. Loughborough, Leics.
Sharp, Peter Hayes	.....	"Headway", Sudbrooke Park, Lincoln.
Stephens, Marion	.....	51 Warren Road, Dartford, Kent.
Thomas, Joan Margaret		Myrtleberry, Caswell, Nr. Swansea.
Thrussell, John Eric	.....	The Lodge, High Berrys, Ripon, Yorks.
Watt, Alistair Grahame		Clevedon, Haddon Road, Chorley Wood, Herts.
Wilson, Charles Martin,		West Cliff, Arnside, Westmorland.

#### DEGREE IN HORTICULTURE—YEAR 2.

Atkins, Peter Samuel	.....	46 Eastcote Lane, South Harrow, Middx.
Cater, Ronald Charles	.....	11 Stokes Road, East Ham, London, E.6.
Colwell, Derek Richard		4 Amesbury Crescent, Hove, 3.
Frost, Alfred Anthony		1 Wilford Lane, West Bridgford, Nottingham.
Large, James Gerrard	.....	46 Dome Hill, Caterham, Surrey.
Marshall, Richard Vernon		20, St. Clare Road, Colchester, Essex.
Anthony,		
Mathias, Elizabeth Stella		"Trewellyn", Meadow View, Haverfordwest.
Notley, Grahame Lawrence		69 Goodhart Way, West Wickham, Kent.
Potter, Michael Neil,	.....	"Windyridge", 46 Overhill Drive, Withdean, Brighton, 6.
Smith, John Ernest Bridger,		"The Poplars", Tudwick Road, Tiptree, Nr. Colchester.
Whitehead, Colin	.....	9 Park Grove, Trecynon, Aberdare, Glam, S. Wales.
Wright, William John		East End Farm, Wymondham, Melton Mowbray, Leics.

#### DEGREE IN HORTICULTURE—YEAR 3.

Bedding Arthur John	.....	11 Minehead Road, Streatham, London, S.W.16
Cooke, Leonard,	.....	Windyridge, Clipstone Road, Forest Town, Nr. Mansfield, Notts.
Ford, Ian Reginald	.....	Began House, St. Mellons, Nr. Cardiff, S. Wales.
Greenwood, Frederick	.....	2 Sandbeck Road, Doncaster, Yorks.
Denham,	.....	
Jubb, Stanley	.....	Lancaster House, 30 Leicester Road, Shepshed.
Metcalf, Christine Elizabeth		122 Doddington Road, Lincoln.
Payne, Charles Bernard		Rustington, Glenwood Road, Chellaston, Derby.
Smalley, Joyce Barbara		"Runswick", 4 Villa Grove, Keworth Green, Yorks.

#### DIPLOMA IN POULTRY HUSBANDRY—YEAR 1.

Cartwright, Peter	.....	26 Club Garden Road, Sheffield 11, Yorks.
Chaborel, Lucette Frances		87, Chatsworth Court, Pembroke Road, London, W.8.
Cole, Jack Empson Batten		"Brookside", St. George's Well, Cullompton, Devon.
Crosby, Thomas Brian		53 Shakespeare Road, Cheltenham.
Curley, Brenda Winifred,		Welbourn, Lincoln.
Mary,		
Davies, John T. G.	.....	Herriarth Poultry Farm, Llangyniew, Nr. Welshpool, Mont.
Howe, Suzanne	.....	5 Carisbrooke Avenue, Mapperley Park, Nottm.
Jarvis, Peter M.	.....	Eveley Poultry Farm, Arborfield, Nr. Reading.
Norton Myriam	.....	Sturton-by-Stow, Lincoln.
Ponder, Joan Celia	.....	Elmdale Poultry Farm, Wigborough, Colchester, Essex.
White, John Edgar	.....	52 Market St., Ilkeston, Derbys.
Wilmot, Patricia,	.....	Gothe Walk, Potter's Bar, M'sex.

#### DIPLOMA IN POULTRY HUSBANDRY—YEAR II.

Barrett, Constance Beryl		Blofield Corner, Nr. Norwich, Norfolk.
Bell June	.....	Brookside House, Eaglesfield, Cockermouth, Cumberland.
Dunford, Barbara Jane		Lee Farm, Herriard, Basingstoke, Hants.
Hingley Hazel Elizabeth		Willetts Farm, Heightington, Nr. Bewdley, Worcs.
Sherlock, Andrew Gordon		Old Saw Mill, Sanderstead Village, Surrey.
Curran, Peter Desmond		Corlough, Bawn Boy, Co. Cavan, Eire.
Daly, James Patrick	.....	Derry-Lahan, Thomas Town, Athlone, Co. Roscommon.



To NOTTINGHAM

—*Queen of the Midlands*

To REDMAYNE & TODD

—*King of Sports Outfitters*

*All the equipment  
for all the major  
Sports—and for  
all the others—*

*Fencing  
Ski-ing  
Climbing  
Basket-ball  
Fishing  
Shooting  
etc.*

REDMAYNE and  
TODD LTD.

SERVICE FOR SPORT

Carrington St., NOTTINGHAM

Nottm. 41604, 45872.

YOUR APPOINTED TAILOR  
AND OUTFITTER

*Will & Hill*

NOTTINGHAM

*Civil and Military Tailors.*

FORMAN STREET & TRINITY SQUARE



Telephone : 2980 Loughborough.

# J. SKETCHLEY



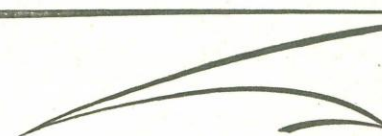
BOOKSELLER  
and  
STATIONER  
LENDING LIBRARY



25, High Street, Loughborough

*'Spring time is Seed time'*

---



*The BEST*  
GARDEN SEEDS  
*are obtainable from*

SKINNER & ROOK  
LONG ROW  
NOTTINGHAM

*Phone 44504*

WRITE FOR CATALOGUE



*District Agents for*  
SUTTON & SONS, LTD.  
*Royal Seed Establishment*  
READING

*Seedsman to His Majesty the King.*



Telephone 43531

## *Sisson & Parker Ltd.*

for

BOOKS ON ALL SUBJECTS

STATIONERY

FOUNTAIN PENS

HANDICRAFT MATERIALS

TOYS AND GAMES

LEATHER AND FANCY GOODS

TOILET REQUISITES

*Wheeler Gate, Nottingham*

*Skill's*

## COACHES AND SALOONS

All kinds of Private Hire Enquiries welcomed.

SATURDAY AND SUNDAY SERVICES TO BRIDLINGTON  
FILEY & SCARBOROUGH (Whitsuntide to end of September).

Tours and Excursions from the Car Park, 9 Derby Road,  
and Skill's Branch Office, 180, Alfreton Rd., Nottingham.

Head Office : St. PETERS STREET, RADFORD  
Tel. 74645 (five lines).

Branch Office : 180, Alfreton Road, NOTTINGHAM.

*"SKILL'S.....with Pleasure."*



